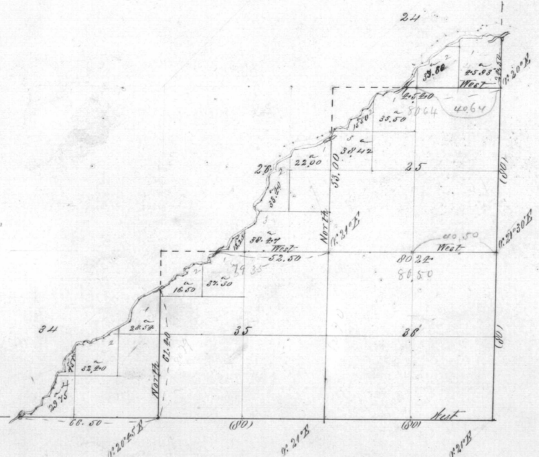


| Subdiv | Area |
|--------|---------|
| 34 | 85.52 |
| 35 | 611.00 |
| 36 | 754.57 |
| 37 | 210.63 |
| 38 | 823.30 |
| 39 | 850.00 |
| Total | 2855.02 |

General Description
The land in this Township is generally level or gently rolling, Soil 14th rate, Good grass



65.40
34.40
77.80

45.98
59.67
39.20
34.61
3.00
161.89
1.59
0.9
39.69
1.59
36.10

Scale 20 Chains to an Inch

| Lines | Contractor | Contractors | | Amount Accepted into Chain Book | Commenced | Completed |
|--------------|------------|-------------|----------------|------------------------------------|-----------|-----------|
| | | No. | Date | | | |
| Subdivisions | J. & Hardy | 184 | October 4 1877 | 4 53 57 | | |

The above Map of Town 4 North Range 3 East with the Oregon within the boundaries of said Township is strictly conformable to the original field notes of the Survey, and will be filed in this Office when the same are examined and approved.

Surveyor General's Office
Oregon City, June 21st 1878

W. H. Cole
Sur. Gen. of Oregon