



DEPARTMENT OF THE INTERIOR
UNITED STATES RECLAMATION SERVICE
F. H. NEWELL DIRECTOR A. P. DAVIS CHIEF ENGINEER

UMATILLA PROJECT OREGON

SUPPLEMENTAL PLAT

SECTION 32

TOWNSHIP 5 NORTH, RANGE 29 EAST W. M. OREGON

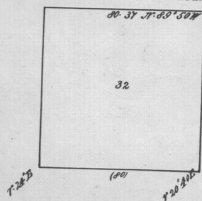
SURVEYED BY E. T. ERIKSEN, ASSISTANT ENGINEER U. S. R. S.

DEPARTMENTAL INSTRUCTIONS OF OCTOBER 24, 1906

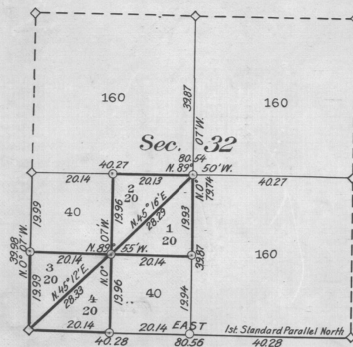
NOVEMBER 1913

SCALE: 4 INCHES = 1 MILE

COPIED FROM PLAT APPROVED DECEMBER 7, 1861



- ◊ DENOTES CORNER OF ORIGINAL SURVEY FOUND IN PLACE
- DENOTES CORNER SET BY E. T. ERIKSEN ASSISTANT ENGINEER U. S. R. S.
- DENOTES WITNESS CORNER SET BY E. T. ERIKSEN



See G. S. Letter 675, 384795
(see File 4-A.)

THE ACCOMPANYING DIAGRAM OF THE SURVEY OF SECTION 32 IN T. 5 N., R. 29 E., W. M., OREGON, EXECUTED UNDER AUTHORITY OF DEPARTMENTAL INSTRUCTIONS OF OCTOBER 24, 1906 IS CORRECT AND ACCORDING TO THE FIELD NOTES THEREOF ON FILE IN THIS OFFICE WHICH HAVE BEEN EXAMINED AND APPROVED.

U. S. RECLAMATION SERVICE
WASHINGTON, D. C. December 12, 1913

Morris Rien
ACTING DIRECTOR

THE ACCOMPANYING DIAGRAM OF THE SURVEY OF SECTION 32 IN T. 5 N., R. 29 E., W. M., OREGON, IS CONFORMABLE TO THE FIELD NOTES THEREOF ON FILE IN THIS OFFICE WHICH HAVE BEEN EXAMINED AND ACCEPTED.

DEPARTMENT OF THE INTERIOR
GENERAL LAND OFFICE
WASHINGTON, D. C. May 22, 1914.

Clay Fallman
COMMISSIONER