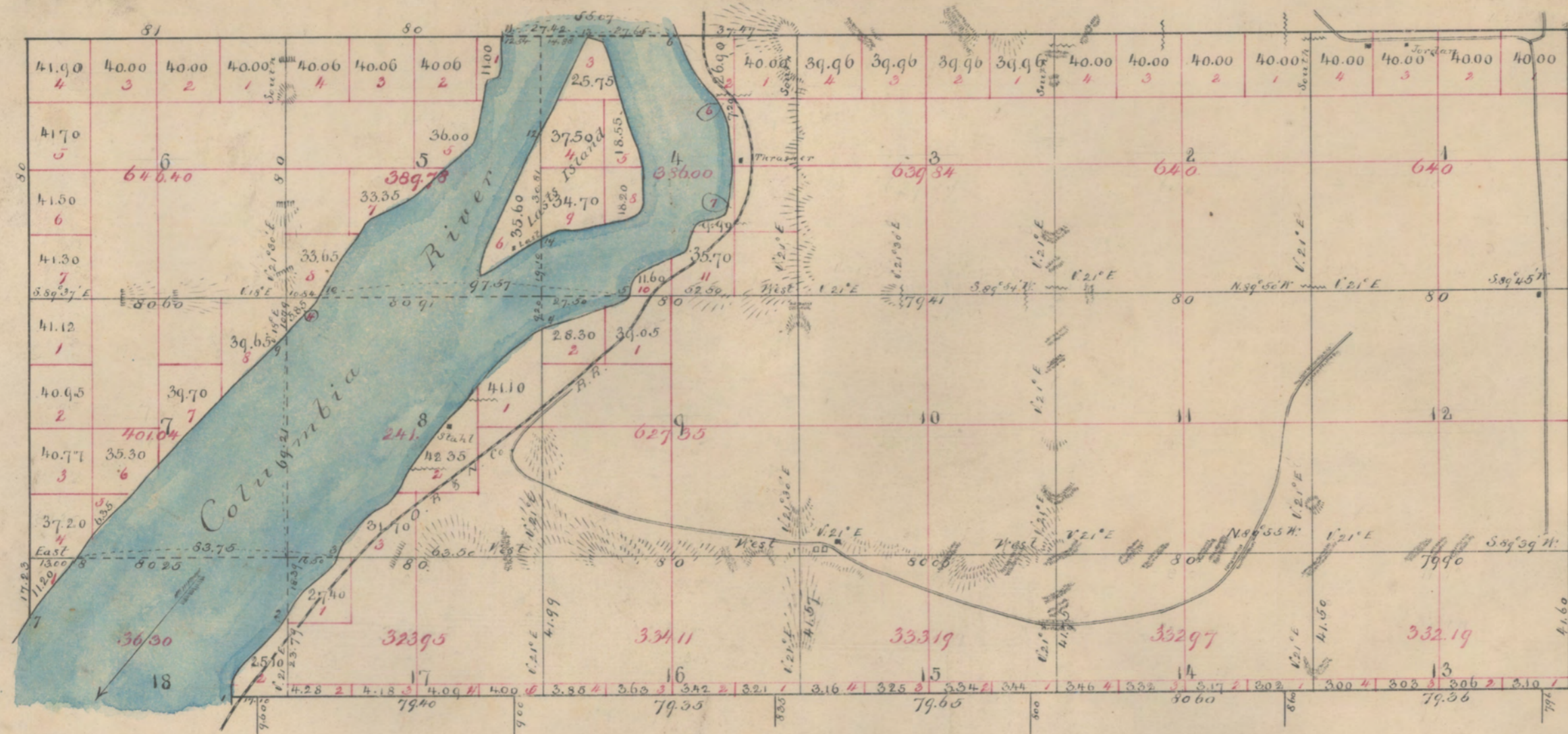


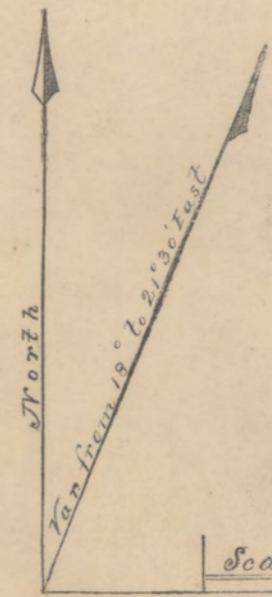
6-31-A.

TOWNSHIP NO. 6 NORTH, RANGE NO. 31 EAST WILL. MER., W. T.



Approved..... June 21<sup>st</sup> 1888  
 Ordered Filed..... June 21<sup>st</sup> 1888.  
 Registers Receipt..... July 6<sup>th</sup> 1888.

Oregon Boundary Line



Scale 40 Ch. to an Inch.

SURVEYOR GENERAL'S OFFICE,  
 OLYMPIA, WASHINGTON TERRITORY,

June 28<sup>th</sup> 1887

The above Map of Township No. 6 North, Range No. 31 East of the Willamette Meridian, in Washington Territory, is strictly conformable to the field-notes of the survey thereof, now on file in this office, which have been examined and approved.

J. C. Beckwith  
 Surveyor General.

SURVEYS DESIGNATED.	BY WHOM SURVEYED.	CONTRACT.		AMOUNT OF SURVEYS.			WHEN COMMENCED.	WHEN COMPLETED.
		No.	Date.	Miles.	Chains.	Links.		
Subdivisions	Francis F. Locher	323	June 26. 1886	24	20	03	April 8. 1887	April 18. 1887
Meanders					9	3		
Intersections					60	65		
Total 76 Acres		8224.12						