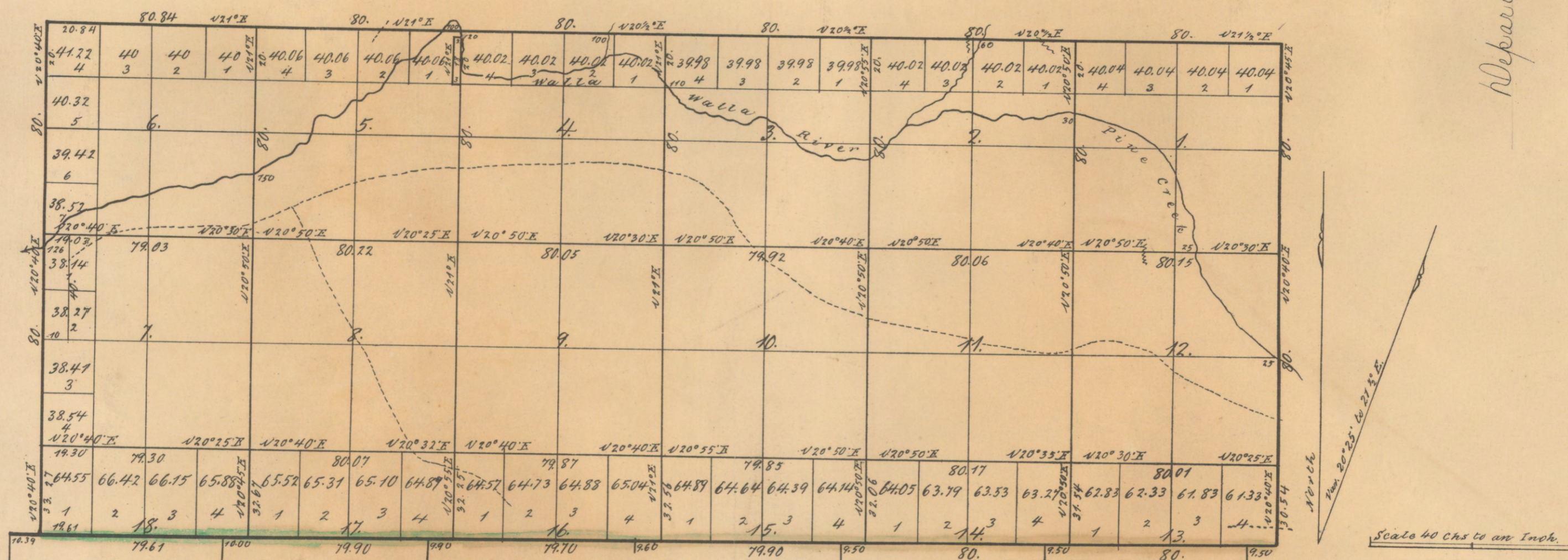


Township No 6 North Range No 33 East Willamette Meridian.

Recd with Sur Genls letter of Jan'y 30 1867



Department of the Interior  
General Land Office  
Feb 28 - 1867

I hereby certify that the above is a true photo-lithograph copy of the original on file in this Office.

*A. M. M. M.*  
Acting Commissioner

Surveys designated	By whom surveyed	Contract		Amt. of Surveys			When Surveyed	When chargeable in the Surveyor Genls Account
		No.	Date	Miles	Chains	Links		
Subdivisions	Daniel G. Major	72	5 <sup>th</sup> May 1867	23	79	78	Apr 16 to 23 1864	3 <sup>rd</sup> Quarter 1867
Excelsior W. Bdy.	"	"	"	2	33	21	Apr 24 to May 1864	
Total No of Acres	9,217	38						

The above Map of Township No. 6 North of Range No. 33 East of the Willamette Meridian in the Territory of Washington is strictly conformable to the field notes of the Survey thereof on file in this Office which have been examined and approved.

Surveyor General's Office  
Olympia W.T. Jan'y 30<sup>th</sup> 1867.  
S. S. Arfield  
Surveyor General W.T.