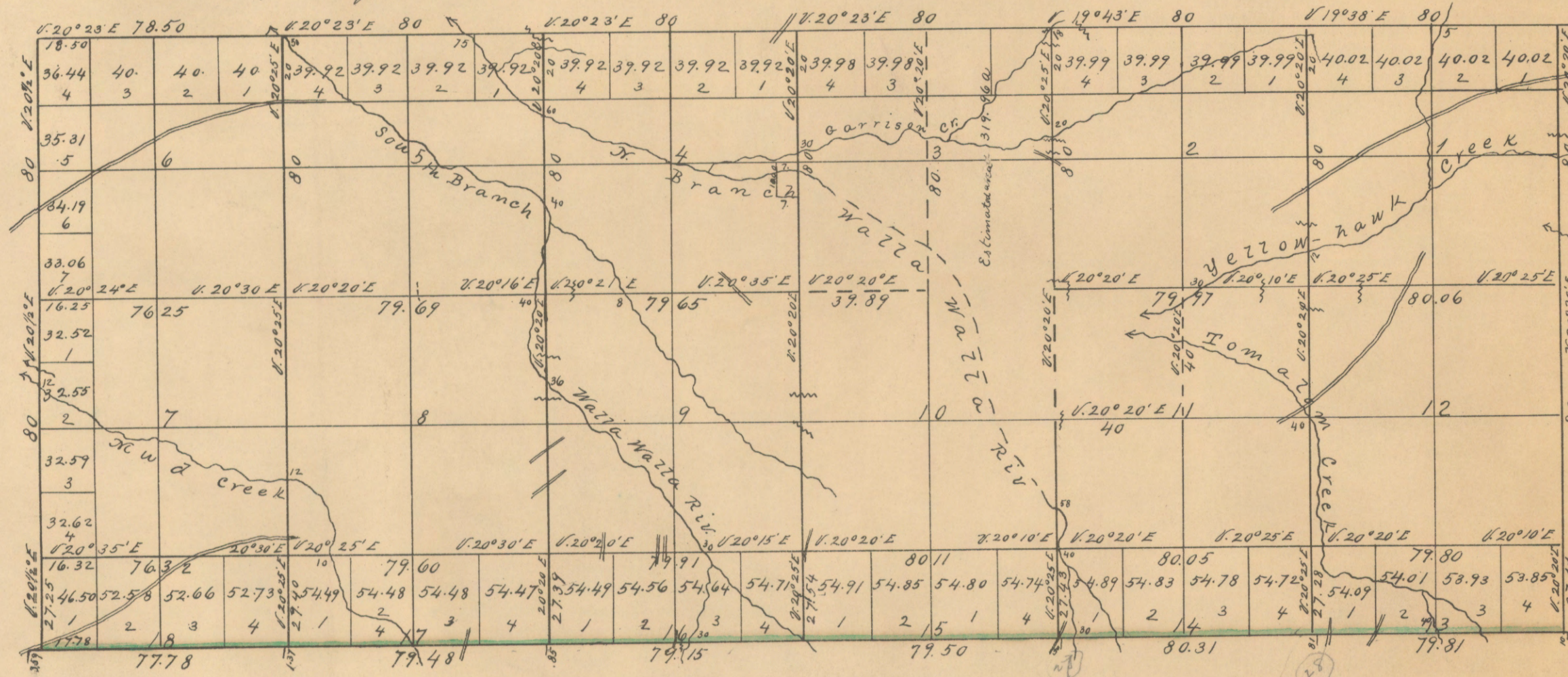


Township No. 6 North Range No. 35 East Willamette Meridian.

Rec^d with Sur. Gen's letter of Jan'y 30 1867.



North
Scale 40 Chs. to an Inch

Department of the Interior
General Land Office
Mar 10 - 1864

Surveys designated	By whom surveyed	Contract		Amt. of Surveys			When surveyed	When chargeable in the Surveyor General's Office
		No	Date	Miles	Chs.	Links		
Subdivisions	Daniel S. Major	72	5 th May 1863	23	08	84	March 22 ^d 1864 to April 6 th 1864	3 rd Quarter 1867.
Extra W. Bdy.	" "			2	27	25	Apr 5 th to May 1864	
Total No of Acres 8923.79								

The above Map of Township No 6 North of Range No. 35 East of the Willamette Meridian in the Territory of Washington is strictly conformable to the field notes of the survey then on file in this office which have been examined and approved.
Surveyor General's Office
Olympia W.T. Jan'y. 30th 1867.

S. Searfield
Surveyor General W.T.

I hereby certify that the above is a true photo-lithographic copy of the original on file in this office.

[Signature]
Acting Commissioner