

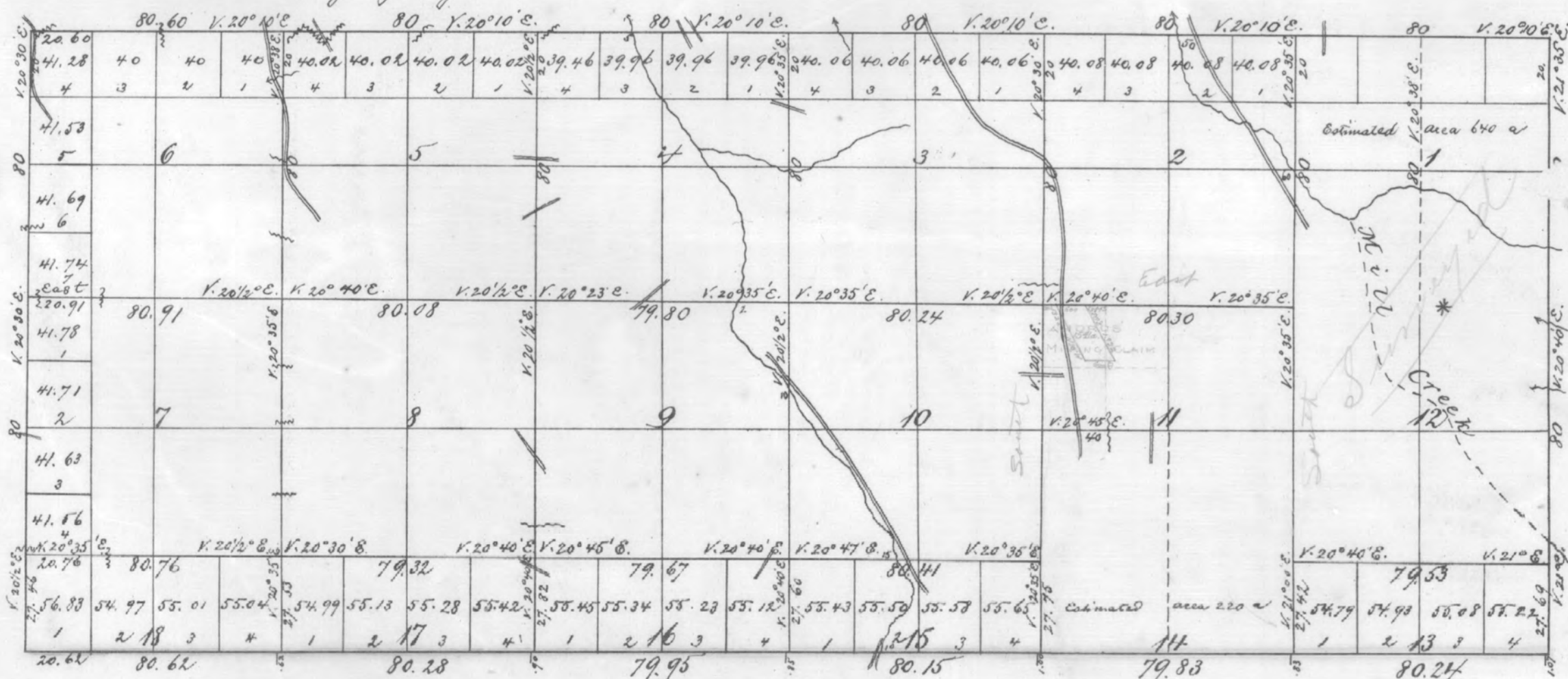
6-37-A



I hereby certify that the above is a true photo-lithographic copy of the original on file in this office

Received with Sur. Gen's letter of Jan'y 30. 1867
Township No. 6 North Range No 37 East Willamette Meridian!

Departments of the Interior
General Land Office
March 13 - 1884



*See letter to Hon. S. Garfield
H. B. P. April 10. 1872
Scale 40 Chs to an Inch

Survey designated	By whom surveyed	Contract		Acut of survey		When payable in the survey	When payable in the survey
		No	Date	Mile	Ch		
Subdivision	Daniel S. Major	72	5th May 1863	21	59	14	Nov. 25th 1863 to Dec 1867
Extension of W. Ad.				4	53	15	March 7. 1864 to June 1864
Total No of acres	9019.39						
	9016.09 per plat approved						Dec. 30. 1871

The above map of Township No 6 North of Range No 37 East of the Willamette Meridian in the Territory of Washington is strictly conformable to the file notes of the survey thereof on file in this office, which have been examined and approved
Surveyor General's Office
Olympia, W. T. Jan'y 30th 1867

S. Garfield
Surveyor General, W. T.