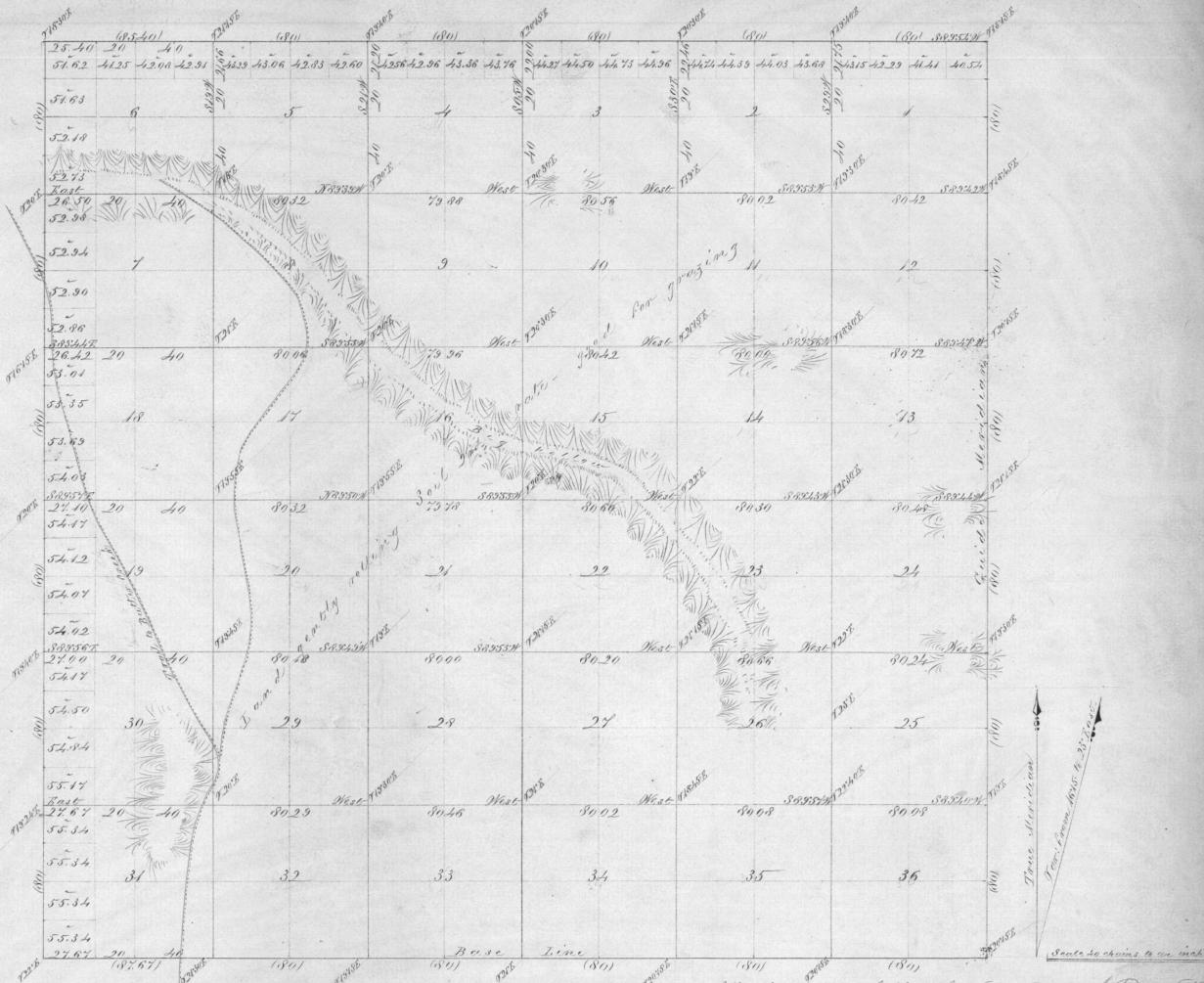


Township N^o 1 North, Range R^o 30 East Willamette Meridian.



Survey designated	By whom surveyed	Contract	Ant. of surveys	When commenced	When completed
Sub-divisions	Wm. B. Campbell	35	60 49 84	October 30th 1860	November 26th 1860
Total number of Acres	23443.62				

The above Map of Township N^o 1 North, Range R^o 30 East Willamette Meridian, Oregon, is strictly conformable to the field notes of the Survey thereof on file in this Office, which have been examined, and approved.

Surveyor General's Office, San Francisco, January 1st 1861.

W. W. Chapman
 Sur. Gen. T. 3, 1861