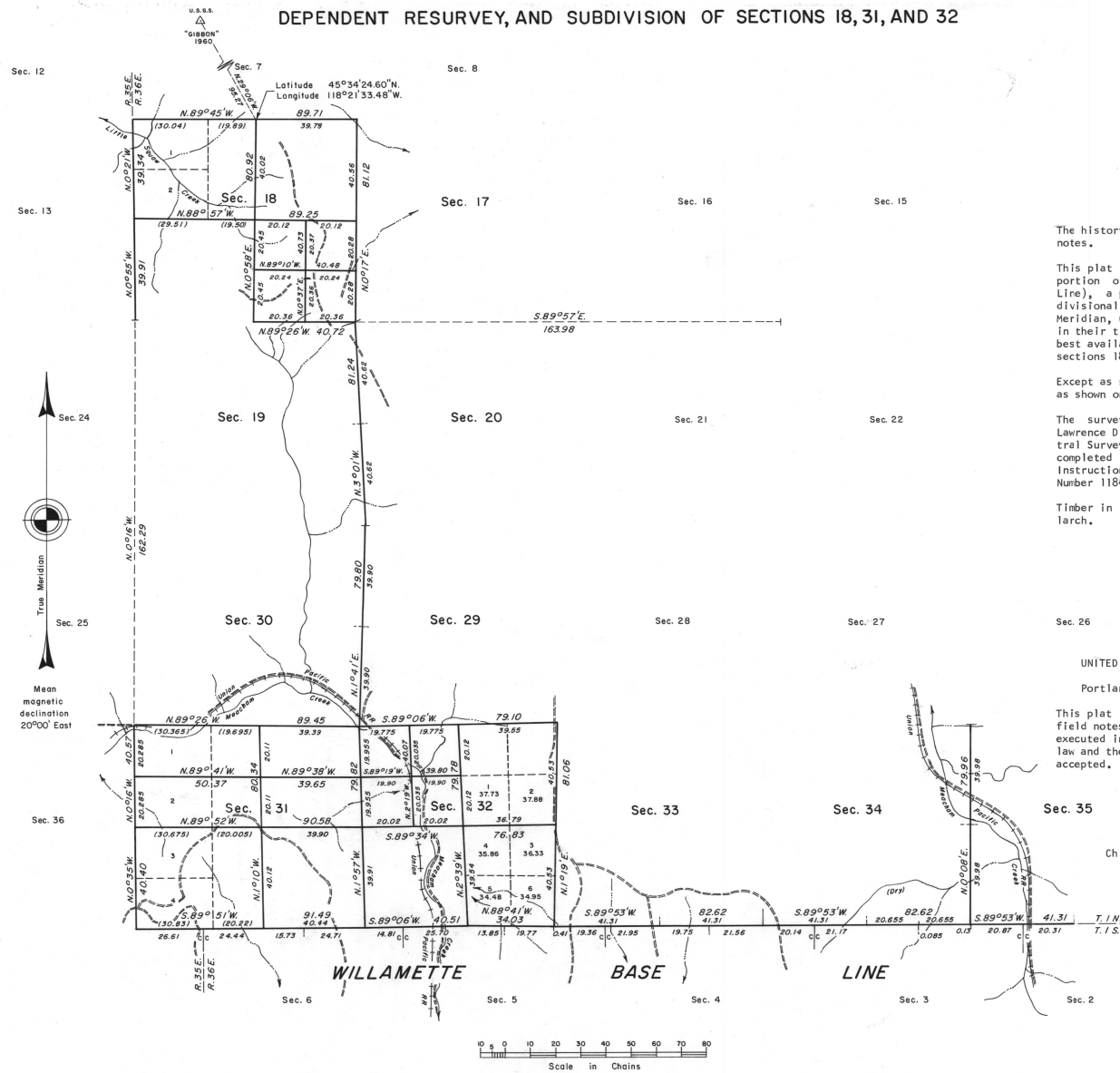


# TOWNSHIP 1 NORTH, RANGE 36 EAST, OF THE WILLAMETTE MERIDIAN, OREGON.

## DEPENDENT RESURVEY, AND SUBDIVISION OF SECTIONS 18, 31, AND 32



The history of surveys is contained in the field notes.

This plat represents a dependent resurvey of a portion of the south boundary (Willamette Base Line), a portion of the west boundary, and subdivisional lines, T. 1 N., R. 36 E., Willamette Meridian, Oregon, designed to restore the corners in their true original locations according to the best available evidence, and the subdivision of sections 18, 31, and 32.

Except as shown hereon, the lottings and areas are as shown on the plat approved March 31, 1883.

The survey was executed by Robert J. Chappel, Lawrence D. Holmes, and Harold W. Heimark, Cadastral Surveyors, beginning October 17, 1983, and completed October 8, 1984, pursuant to Special Instructions dated September 22, 1983, under Group Number 1184, Oregon.

Timber in this area consists of pine, fir, and larch.

UNITED STATES DEPARTMENT OF THE INTERIOR  
BUREAU OF LAND MANAGEMENT  
Portland, Oregon July 2, 1987

This plat is strictly conformable to the approved field notes, and the survey, having been correctly executed in accordance with the requirements of law and the regulations of this Bureau, is hereby accepted.

For the Director

*William W. Glann*  
Chief Cadastral Surveyor of Oregon

"Suspended September 7, 1999, see File 9632 (OR957)"

"Suspension Lifted, October 25, 2002, File 9632 (OR957).  
Refer to plat accepted March 17, 2000."