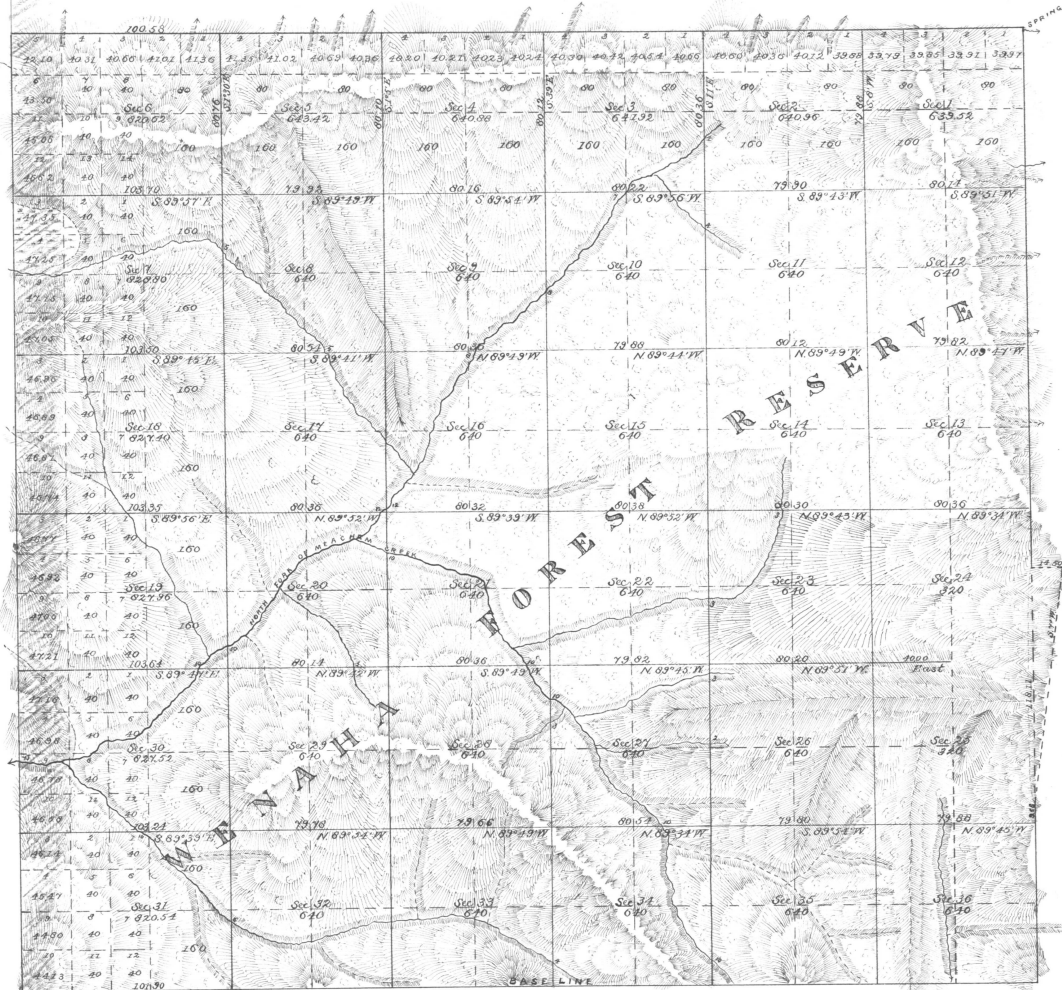


Township No. 1 North

Range No. 37 East

Willamette Meridian, Oregon.



APPROVED BY THE HON. COMMISSIONER G. L. O. *March 31 1883*

Total number of Acres 23,493.54

SURVEYS DESIGNATED.	BY WHOM SURVEYED.	NO.	DATE OF CONTRACT.	AMOUNT OF SURVEYS.			WHEN SURVEYED.	MEAN DECLINATION.
				Miles.	Chains.	Links.		
Township Lines	Jacob C. Cooper	337	July 1, 1881			61	Aug. 30 to Sept. 10, 1882	20° 07' 30" E
Subdivisions	Herman D. Graden	452	June 16, 1882	61	01	61		

0 20 40 60 80

Scale, 40 Chains to an Inch.

The above map of the Subdivisions of Township No. 1 North of Range No. 37 East of the Willamette Meridian, Oregon, is strictly conformable to the Field Notes of the survey thereof on file in this office, which have been examined and approved.

U. S. Surveyor-General's Office,

Portland, Oregon,

*March 31, 1883. James C. Tolson*

Surveyor-General of Oregon.