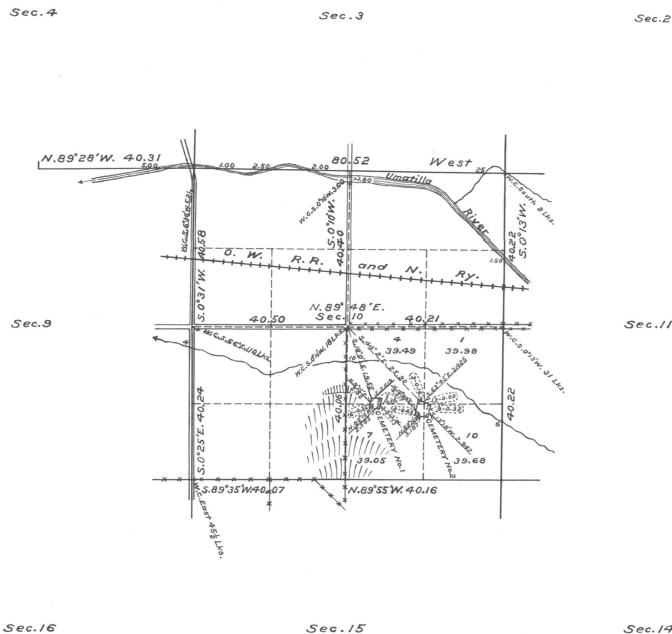


PLAT OF CEMETERIES
IN
Section 10 — Township N^o 2 North Range N^o 33 East of the Willamette Meridian, Oregon.
Containing 1.80 Acres
Scale 20 Chs. to an inch.



Surveys Designated	By Whom Surveyed	Group		Amount of Surveys		When Surveyed	
		No.	Date of Instructions	Mis. chs.	lks.	Began	Completed
Subdivisions	L. E. Willias	23	Aug. 26, 1917	6	43	43	Dec. 6, 1917
Cemeteries	" " "	"	" " "	23	37	37	Dec. 5, 1917
Connections	" " "	"	" " "	45	45	" " "	" " "
Subdivisions	by Currin and Noland	under Special Contract				in	1887

The above Plat of Cemeteries in Section 10 — Township No. 2 North Range No. 33 East of the Willamette Meridian Oregon is strictly conformable to the field notes of the survey thereof on file in this office, which have been examined and approved.

U.S. Surveyor General's Office
Portland, Oregon, Aug. 26, 1918

Edward H. Smith
Surveyor General of Oregon