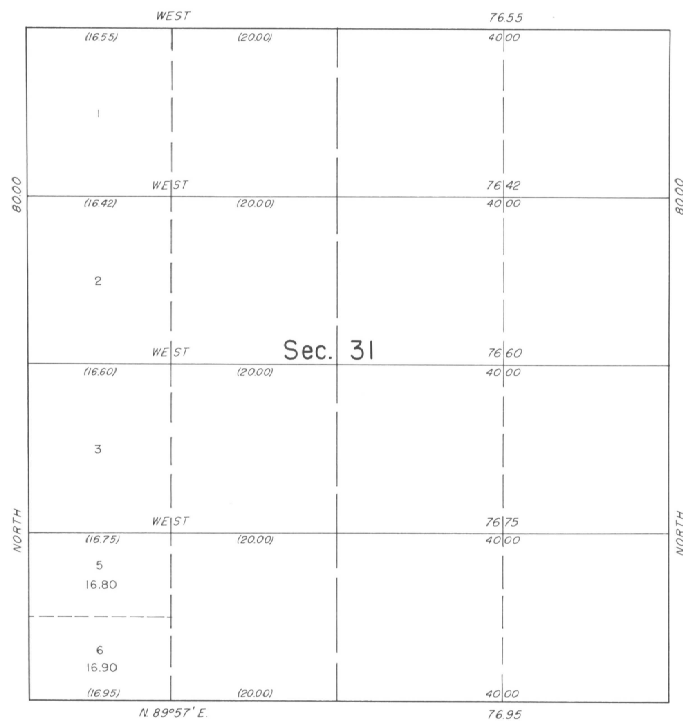


TOWNSHIP 2 NORTH, RANGE 33 EAST, OF THE WILLAMETTE MERIDIAN, OREGON.  
SUPPLEMENTAL PLAT



This supplemental plat of section 31,  
T. 2 N., R. 33 E., Willamette Meridian,  
Oregon, showing a subdivision of original  
lot 4, is based on plat approved June 14,  
1890.

UNITED STATES DEPARTMENT OF THE INTERIOR  
BUREAU OF LAND MANAGEMENT  
Washington, D. C. June 24, 1959

This plat, showing amended lottings, is based upon  
the official records, and having been correctly prepared  
in accordance with the regulations, is hereby accepted.

For the Director

*Earl S. Harrington*  
Cadastral Engineering Staff Officer