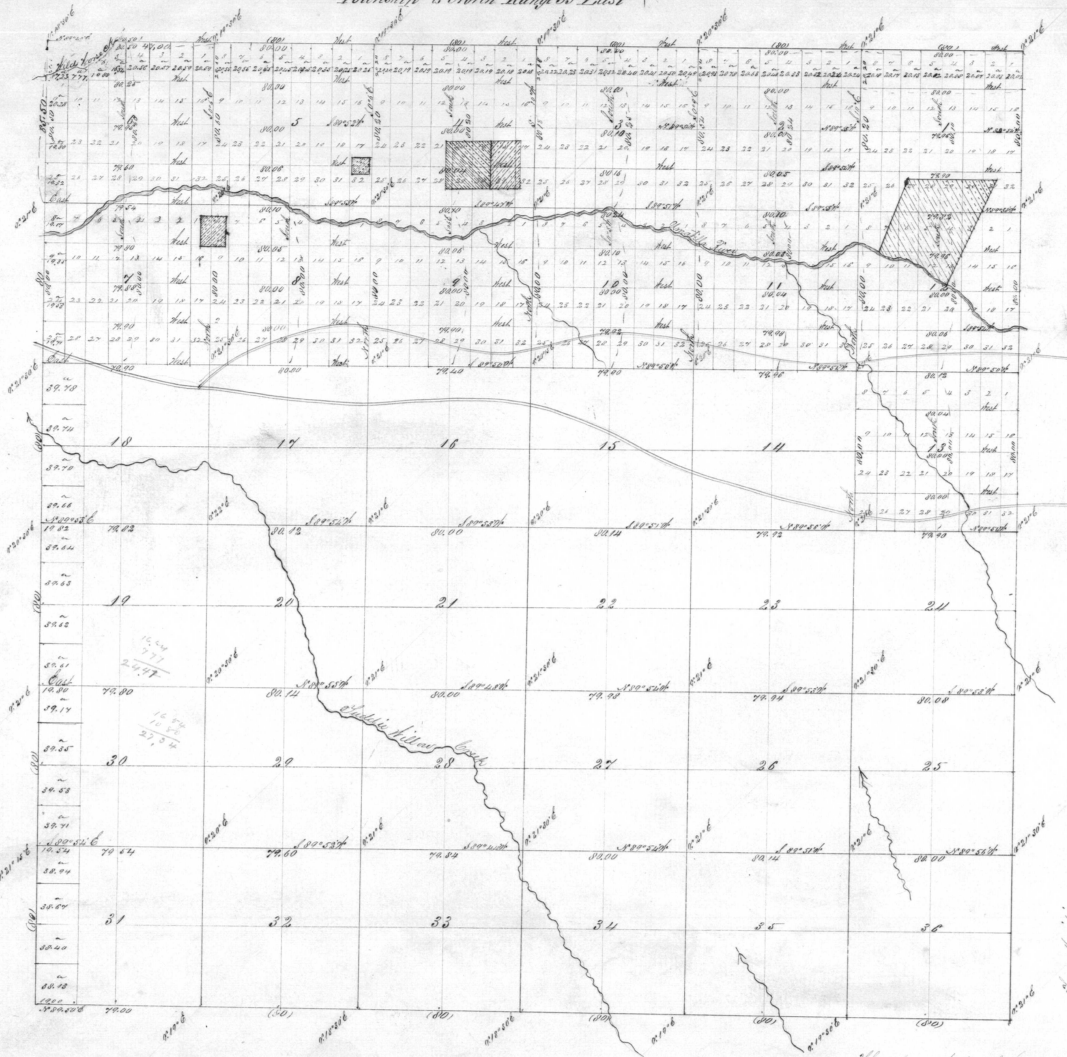


Township 2 North Range 33 East

Area of Sections	
Sections	Acres
1	620.80
2	623.90
3	622.80
4	621.50
5	623.20
6	622.50
7	617.70
8	620.00
9	620.00
10	620.00
11	620.00
12	620.00
13	620.00
Total	8298.30
Total in 10749.44	



General Description
The land in this Township is
level and of fine quality

Scale in chains on each
Section
from 1870 to 1872

Lines	Contractor	Workback		Sect. Subsects		Commenced	Completed
		No	Date	Sect	Subsect		
Subdivisions	J. H. Steady	30	Oct. 2nd 1872	80	84 92	December 1872	December 22, 1872

The above book of the subdivisions of sec 10 to 13 inclusive
S. 2, S. 3, S. 33 East N. 2. The survey was made by J. H. Steady
conformable to the original field notes of the survey made in
1870 in the office which have been examined and approved
by the Surveyor General
C. H. Jones
June 21st 1872

W. H. Colwell
Surveyor