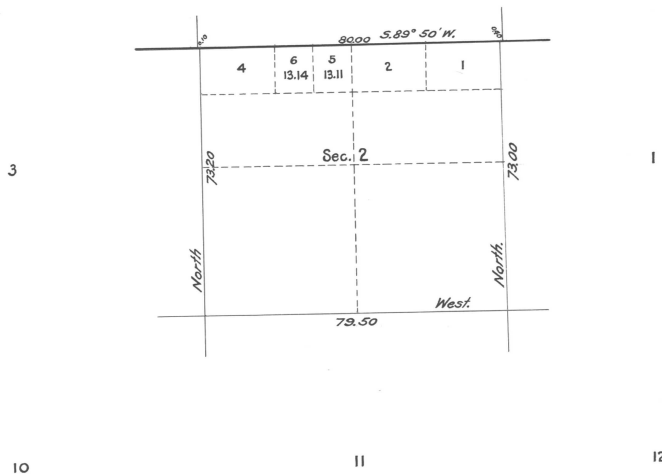


*Supplemental Plat
of
Section 2 - Township No. 2 North, Range No. 35 East of the Willamette Meridian, Oregon.
(Superseding plat of said section approved June 14, 1890)
Scale 20 chains to an inch.*

34

35

36



This Supplemental plat showing the areas and legal designation of the subdivision of old lot 3, Section 2, T. 2 N. R. 35 E. of the Willamette Meridian, Oregon, is made for the purpose of accommodating two Indian allotments in the Umatilla Indian Reservation embracing in part the East and West half of lot 3, prepared in compliance with instructions from the Hon. Asst. Commissioner of the General Land Office contained in letter "E" dated March 22, 1919.

*U. S. Surveyor General's Office,
Portland, Oregon, April 12, 1919*

Ewardell Worth
Surveyor General of Oregon.

ACCEPTED BY THE HON. COMMISSIONER G. L. O. April 23, 1919