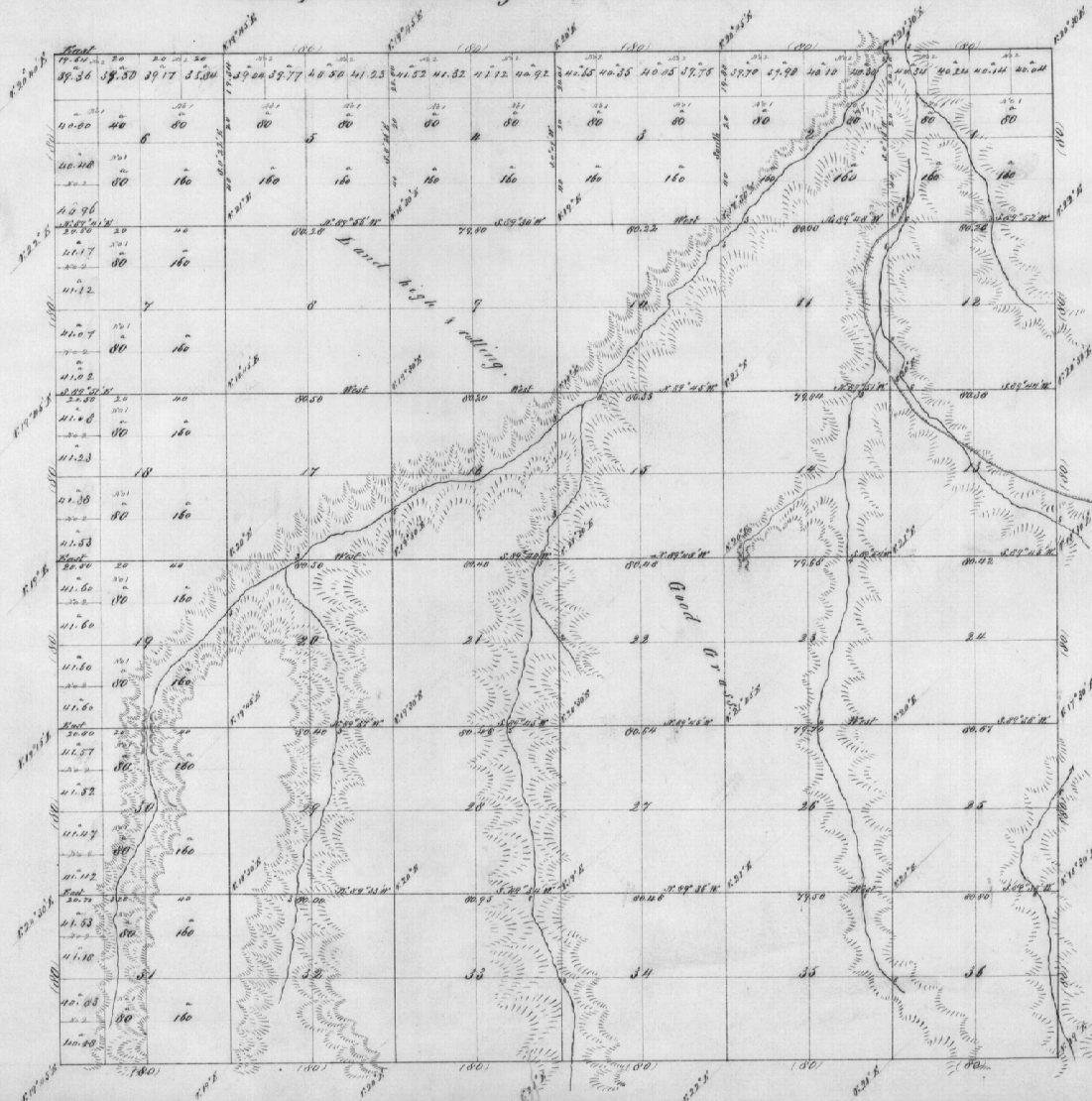


Township No. 2 South Range No. 31 East Willamette Meridian.



Description of Lines	By whom Surveyed	Courses		Amount of Survey		When Surveyed
		Acres	Square	Miles	Square Feet	
Subdivisions	David Clayton	107	Spt. 21 st 1854	60	10 66	Nov 28 th 1854.
Total Acres - 23081.09						

The above map of the Survey of Subdivisions of Township No. 2 S. R. 31 E. Willamette Meridian Oregon is strictly conformable to the field notes of the survey, filed in this office, which have been examined and approved.
 Surveyor General's Office
 Eugene Ore. January 10th 1868.

B. J. Rogers
 Surveyor General Oregon