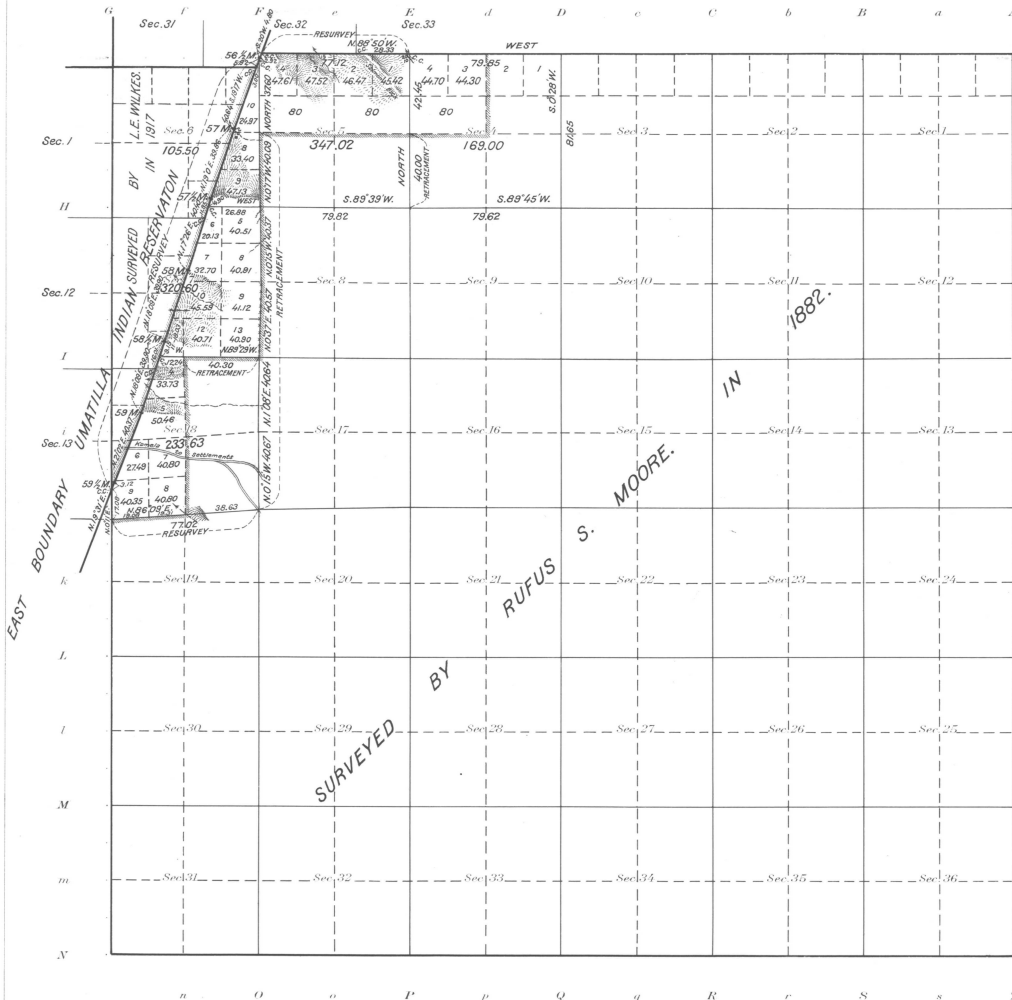


Township No 2 South Range No 35 East of the Willamette Meridian, Oregon.



Areas in Acres	
Public Land	1175.75
Indian Reservation	
Indian Allotments	
Mineral Claims	
Water Surface	
Total Area	1175.75

Scale 40 Chains to an inch

Mean Magnetic Declination 13° 30' E.
Latitude 45° 23' N. } At cor'd Sess. 17, 18, 19 and 20.
Longitude 119° 27' W.

Survey Designated	By Whom Surveyed	Group	Amount of Surveys			When Surveyed		
			No.	Mks.	chs.	begun	Completed	
Resurvey Partion N. By.	L. E. Wilkes		39	77	12	Oct. 23, 1917	Oct. 28, 1917	
Rear Tract & Star Portion Subd.	" "		"	5	78	83	" 19	" 31
Connections	" "		"	0	16	97	" -	" 25
Reservation By.	Reestablished by Curtis & Nelson under special						in 1897.	
J. W. & Portion of N. By's	J. C. Cooper	whiter				Contract No. 327	in 1892.	
Partion of N. By.	Curtis & Nelson	Special				Contract	" 1899	
" "	Martin, Buchanan	Contract				No. 626	" 1855	
" "	John A. Hurlbut	"				" 201	" 1879	

The above map of Township No. 2 South Range No. 35 East of the Willamette Meridian Oregon is strictly conformable to the field notes of the survey thereof on file in this office, which have been examined and approved

U. S. Surveyor General's Office.
Portland, Oregon, August 26, 1918

Edward W. Smith
Surveyor General of Oregon.