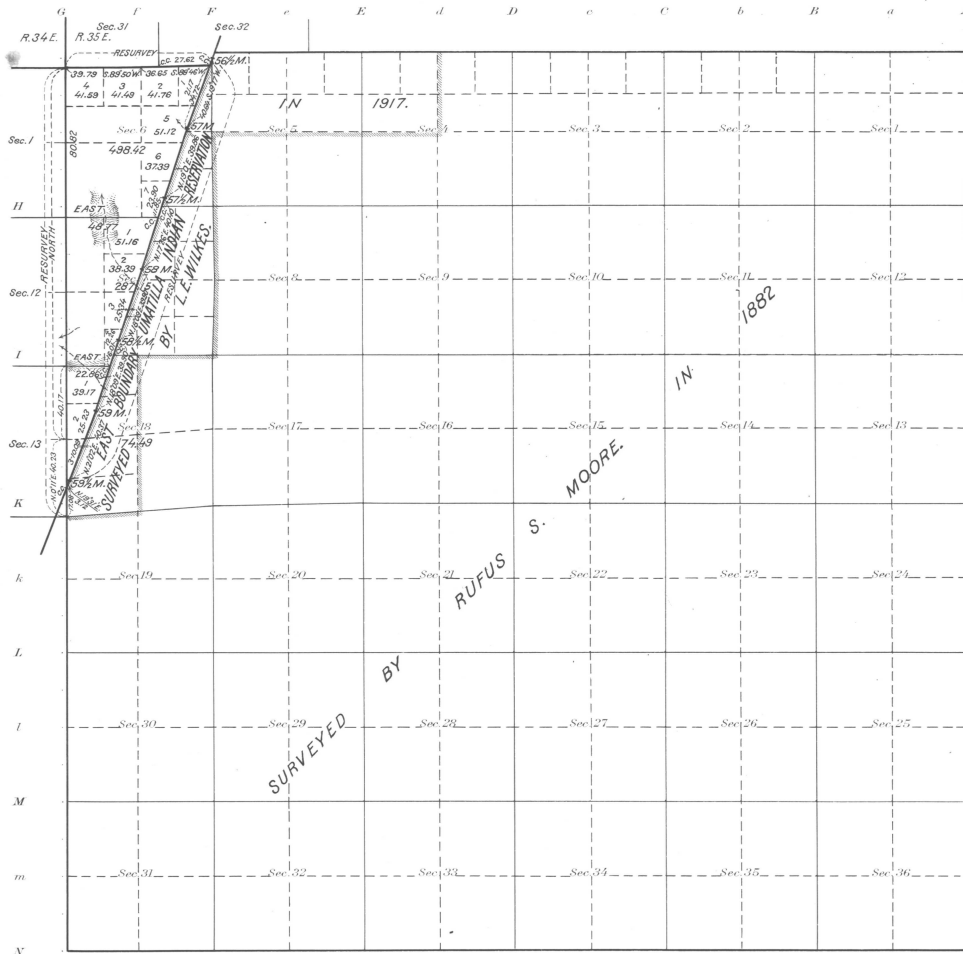


Township N^o 2 South Range N^o 35 East of the Willamette Meridian, Oregon.



Acreage in Acres	
Public Land	860.06
Indian Reservation	
Indian Allotments	
Mineral Claims	
Water Surface	
Total Area	860.06

Scale 40 Chains to an inch

Mean Magnetic Declination 19° 30' E.
Latitude 45° 25' N At Cor. of Secs. 7, 12, 13 and 18.
Longitude 118° 28' W

Surveys Designated	By Whom Surveyed	Group No.	Date of Instructions	Amount of Surveys			When Surveyed	
				Me.	Ac.	Res.	Began	Completed
Reurvey Portion N. Bdy.	L. E. Wilkes	29	February 20, 1897	76	44		Oct. 26, 1917	Oct. 26, 1917
Survey Subdivisions	"	"	"	71	63		Sept. 24 "	" 27 "
Connections	"	"	"	27	86		"	"
Reurvey U. I. R. Bdy.	"	"	"	3	4	19	" 5 "	" 30 "
Reservation Bdy.	Reestablished by Currin & Moland	under	Special Contract				It	1897
S. W. & Portion of N. Bdy.	J. C. Cooper	under	Contract	No.	397			1911
Portion of N. Bdy.	Currin & Moland	under	Special Contract					1897
"	Manning Buchanan	under	Contract	No.	616			1885
E. Bdy.	John A. Hartberg	under	Contract					1892

The above map of Township No. 2 South Range No. 35 East of the Willamette Meridian Oregon is strictly conformable to the field notes of the survey thereof on file in this office, which have been examined and approved

U. S. Surveyor General's Office.
Portland, Oregon August 26, 1918.

Crawford Worth
Surveyor General of Oregon.