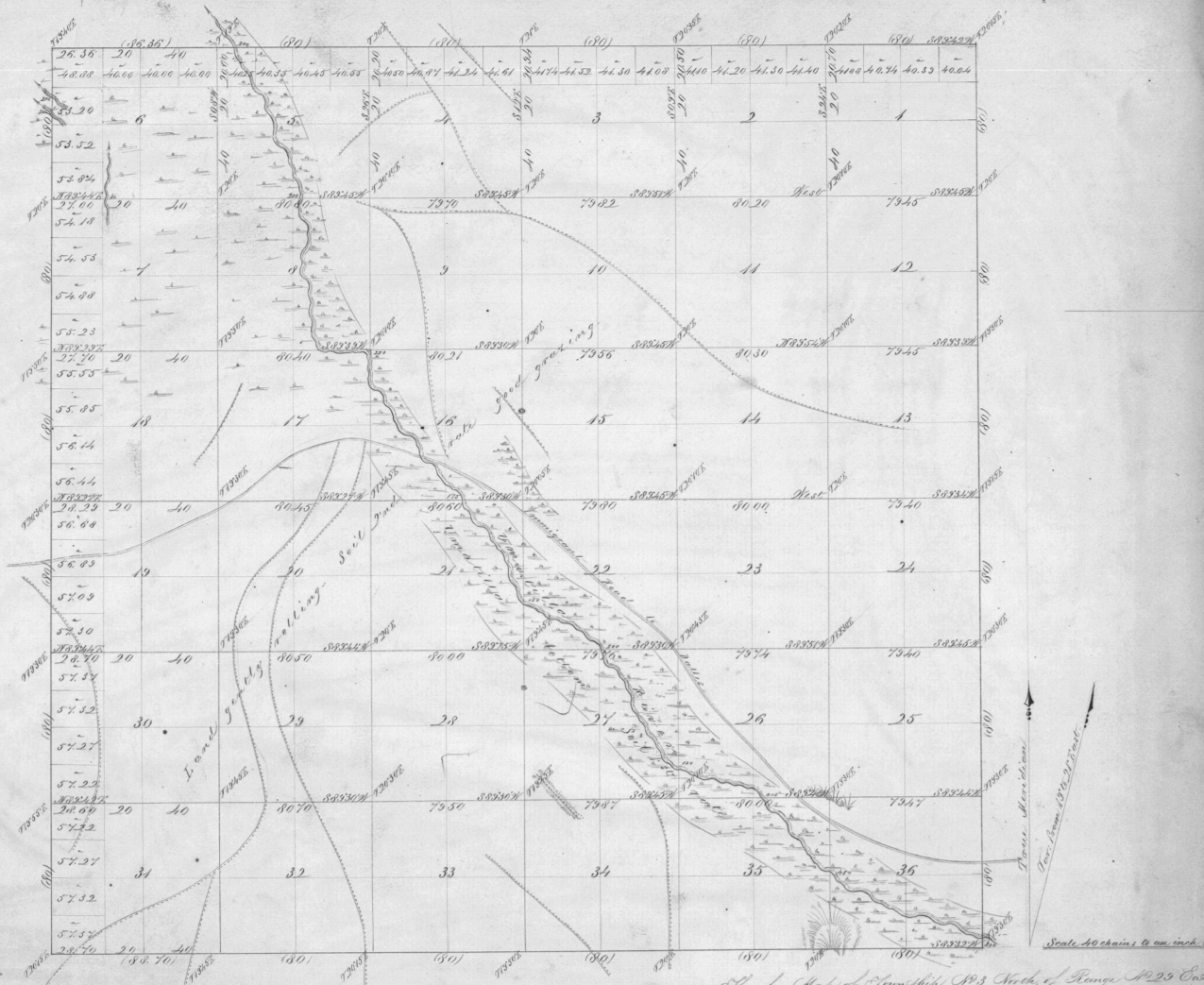


Township R 3 North Range R 29 East Willamette Meridian.

3883



Surveys designated	By whom surveyed	Contract		Cont. of survey		When surveyed.
		No.	Date	Acres	Sections	
Township Lines	N. H. Galt	84	July 22nd 1853	12	06	36
Subdivisions	N. H. Galt	84	July 22nd 1853	60	44	71
Total number of Acres 23,437.24						

The above Map of Township R 3 North of Range R 29 East of the Willamette Meridian, Oregon, is strictly conformable to the field notes of the Survey thereof on file in this Office which have been examined and approved.

Surveyor General's Office,
 Eugene City January 31st 1860

N. H. Chapman
 S. P. Reed