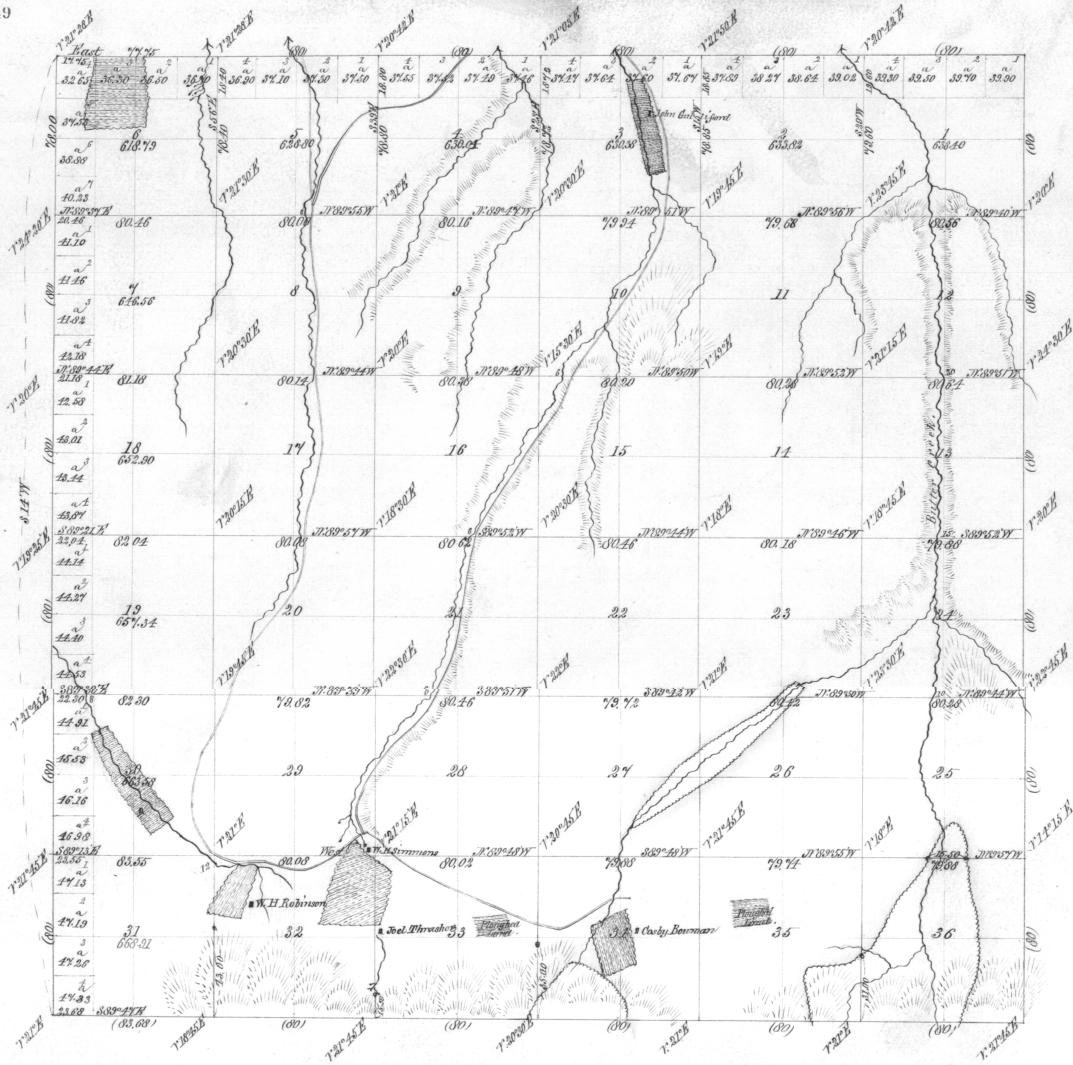


Township No. 3 South Range No. 30 East Willamette Meridian, Oregon.

3949



General Description

Surface slopes North. Small steep on South side, and S.E. corner is mountainous. The larger part is rolling. Soil, greater part 3^d rate, large part good 2^d rate and some 1st rate and well adapted to farming without irrigation.

The land is all well set with bunch grass. There is some good timber in the S.E. part.

Total Acres 23062.52.



Scale 40 Chains to an Inch.

Lines.	Contractor.	Contract.		Amount Surveyed.			Commenced.	Completed.
		No.	Date.	Miles.	Chains.	Links.		
Subdivisions Prairie	Geo. S. Pershiv	333	July 22 1878	58	27	40	Sept 5 th 1879	Sept 14 1879
do do do	do do do	do	do do do	1	60	00		
			Total	60	07	40		

The above Map of the subdivisional lines of Township No. 3 South Range No. 30 East Willamette Meridian, Oregon, is strictly conformable to the original field notes of the survey thereof on file in this office, which have been examined and approved.

U. S. Surveyor-General's Office,
Portland, Oregon,

Oct 22^d 1879.

James C. Bolman

Surveyor-General of Oregon.