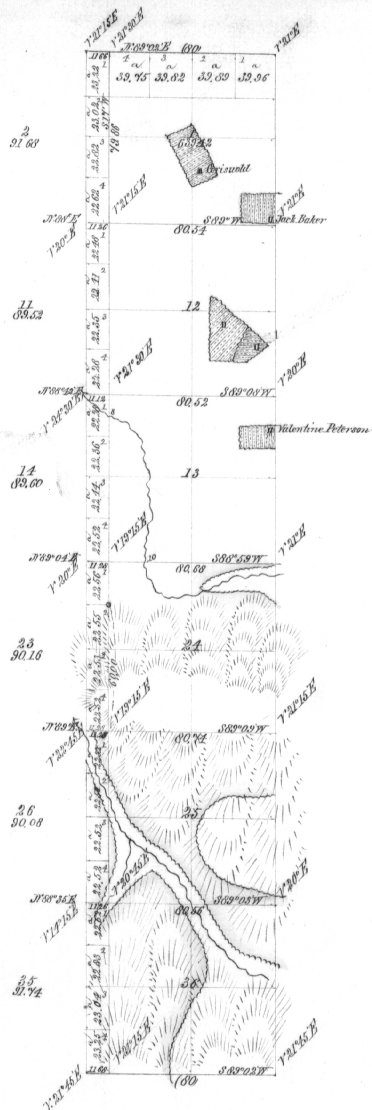


3998

Subdiv.
11/3



General Description
The south 1/2 is mostly mountainous and the north 1/2 is rolling or undulating, soil in south 1/2 is mostly 5th rate north 1/2 2^d rate, and was by all good for farming, sections 11 & 12 are each about 3 cords with good timber, section 24 has some good timber or scattering groves, but is mostly valuable for grazing

Total Acres: 4382.20



Scale 40 Chains to an Inch.

Lines.	Contractor.	Contract.		Amount Surveyed.			Commenced.	Completed.
		No.	Date.	Mils.	Chains.	Links.		
Subdivisions: Bolting	Geo S. Pershin	332	July 22 1879	6	55	26	Sept. 3 ^d 1879	Sept 4. 1879
do	do do do.	da	do, do do	5	03	84		
			Total	11.	59	10		

The above Map of the subdivisional lines of Township No. 3 South Range No. 304 East Willamette Meridian, Oregon, is strictly conformable to the original field notes of the survey thereof on file in this office, which have been examined and approved.
U. S. Surveyor-General's Office,
Portland, Oregon,
Oct 27th 1879.

James G. Bolman
Surveyor-General of Oregon