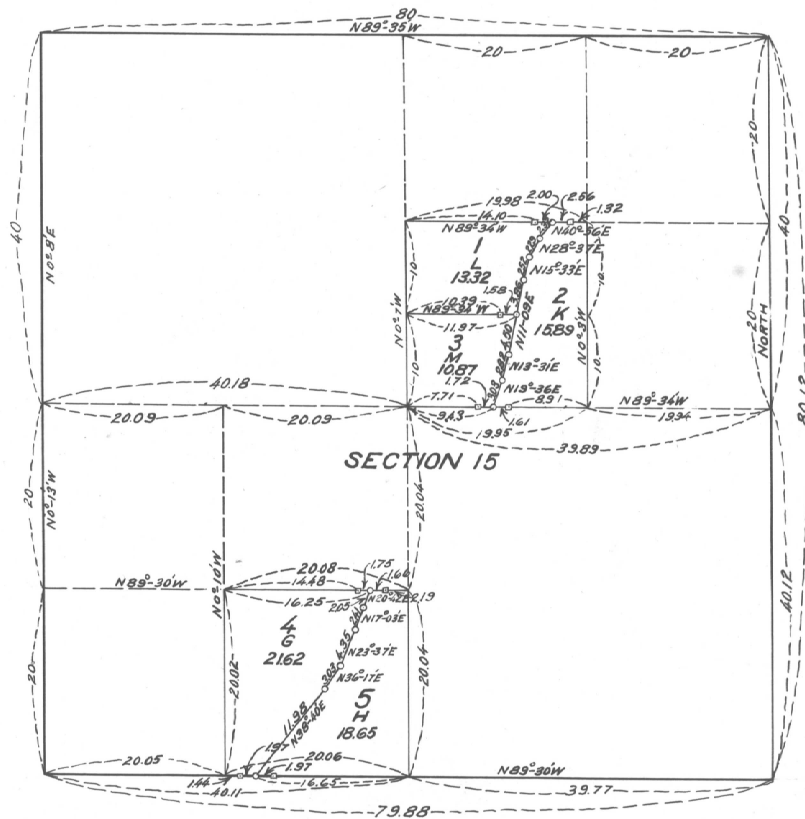


UNITED STATES RECLAMATION SERVICE
 UMATILLA PROJECT OREGON
 TOWNSHIP 4 NORTH, RANGE 28 EAST, WILLAMETTE MER.

AMENDED FARM UNIT PLAT ACCOMPANYING FIELD NOTES
 OF RESUBDIVISION OF FARM UNITS ALONG THE OREGON R.R. AND NAVIGATION
 CO'S TRACK THRU THE NE $\frac{1}{4}$ AND SW $\frac{1}{4}$ OF SECTION 15.
 SURVEYED MARCH 1909, BY W. ROY SAXTON, ASST ENGINEER, U.S.R.
 UNDER AUTHORITY OF DEPARTMENTAL INSTRUCTIONS OF OCT. 24, 1906

7 additional parcels 9/14/14



EXPLANATION

DISTANCES ARE SHOWN IN CHAINS.
 MEASUR CORNERS ARE SHOWN THIS:
 WITNESS CORNERS ARE SHOWN THIS:
 LOT NUMBERS ARE SHOWN THIS:
 FARM UNIT LETTERS ARE SHOWN THIS:
 TOTAL ACRES IN EACH FARM UNIT SHOWN THIS:

○
 —○—
 4
 B
 13.22

THE ABOVE DIAGRAM OF THE SURVEY OF FARM UNITS BORDERING ON THE O. R. R. & N. CO.'S TRACK IN SEC. 15, T. 4 N., R. 28 E., W. M. OREGON, EXECUTED UNDER AUTHORITY OF DEPARTMENTAL INSTRUCTIONS OF OCTOBER 24, 1906, IS CORRECT AND ACCORDING TO THE FIELD NOTES ON FILE IN THIS OFFICE, WHICH HAVE BEEN EXAMINED AND APPROVED.

U. S. RECLAMATION SERVICE,
 WASHINGTON, D. C. *10/24/1909*

Morris C. Deen
 ACTING DIRECTOR.

Deen
 DEPARTMENT OF THE INTERIOR
 GENERAL LAND OFFICE
 WASHINGTON, D. C. *James P. 1909.*
 THE ABOVE DIAGRAM OF THE SURVEY OF FARM UNITS BORDERING ON THE O. R. R. & N. CO.'S TRACK IN SECTION 15, T. 4 N., R. 28 E., W. M. OREGON, IS CONFORMABLE TO THE FIELD NOTES WHICH HAVE BEEN EXAMINED AND ACCEPTED.

Paul W. ...
 COMMISSIONER.