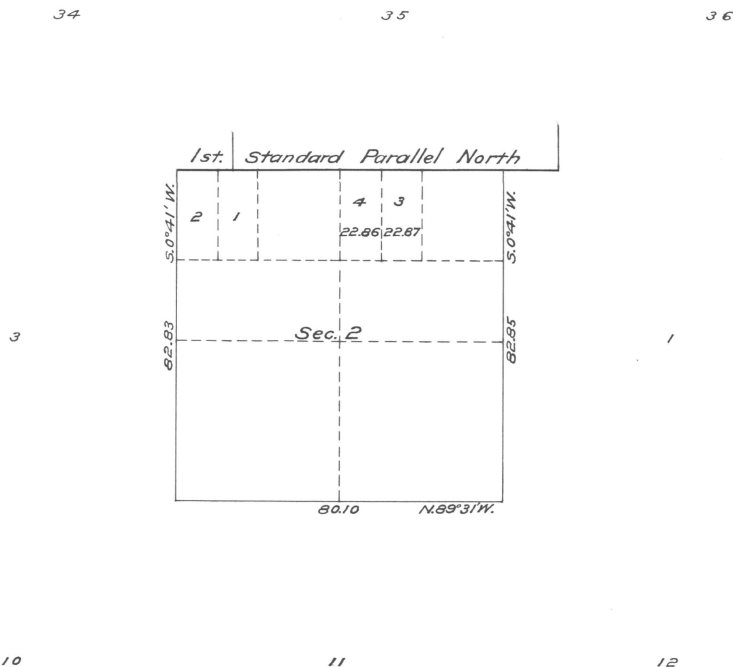


Original

2nd Supplemental Plat 7/21/14

2nd. Supplemental Plat
of
Lots 3 and 4 Section 2, T. 4 N. R. 28 E. of the Willamette Meridian Oregon

Scale 20 chains = 1 inch



Note:

*See Supplemental Plat
approved November 21, 1913
for areas of Lots 1 and 2.*

This 2nd. Supplemental Plat showing the subdivisions of the NW $\frac{1}{4}$ NE $\frac{1}{4}$ of Section 2, T. 4 N. R. 28 E. W. M. Oregon, as shown on plat approved December 31, 1860, is made for the purpose of obtaining the area and legal description of the subdivisions thereof to accommodate the Homestead entry, La Grande 07613 of Carl Vertner for farm unit "C" or the E $\frac{1}{2}$ NW $\frac{1}{4}$ NE $\frac{1}{4}$ of said section and township (Umatilla Irrigation Project subject to the provisions of the Reclamation Act of June 17, 1902 - 32 Stats. 388) and is hereby approved.

*U.S. Surveyor General's Office
Portland, Oregon, Aug. 13, 1914*

Edward J. Worth
U.S. Surveyor General for Oregon