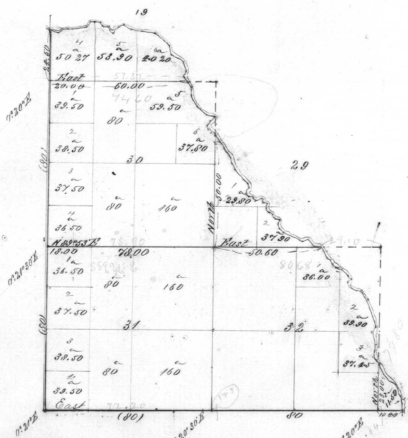


Sections	Area
11	144.37
20	104.70
30	609.00
31	625.00
32	522.94
	11.00
Total	2052.02



General Description
The land in this Township is generally rolling, soil 2^d rate. Good grass.



Scale to Chains to an inch

The above Map of Part of T⁴N R³⁵E. Will. Mer. Oregon in the
Umatilla Reservation is strictly conformable to the original
field notes of the survey thereof on file in this office which have been
examined and approved,
Surveyor General's Office
Boyan City June 21st 1872

W. S. Cole

Sur Gen.

Lines	Contractor	Contract		Amount Survey		Commenced	Completed
		No	Date	Miles	Chains		
Subdivisions	J. P. Moody	182	October 2, 1871	2	21	60	October 24, 1871