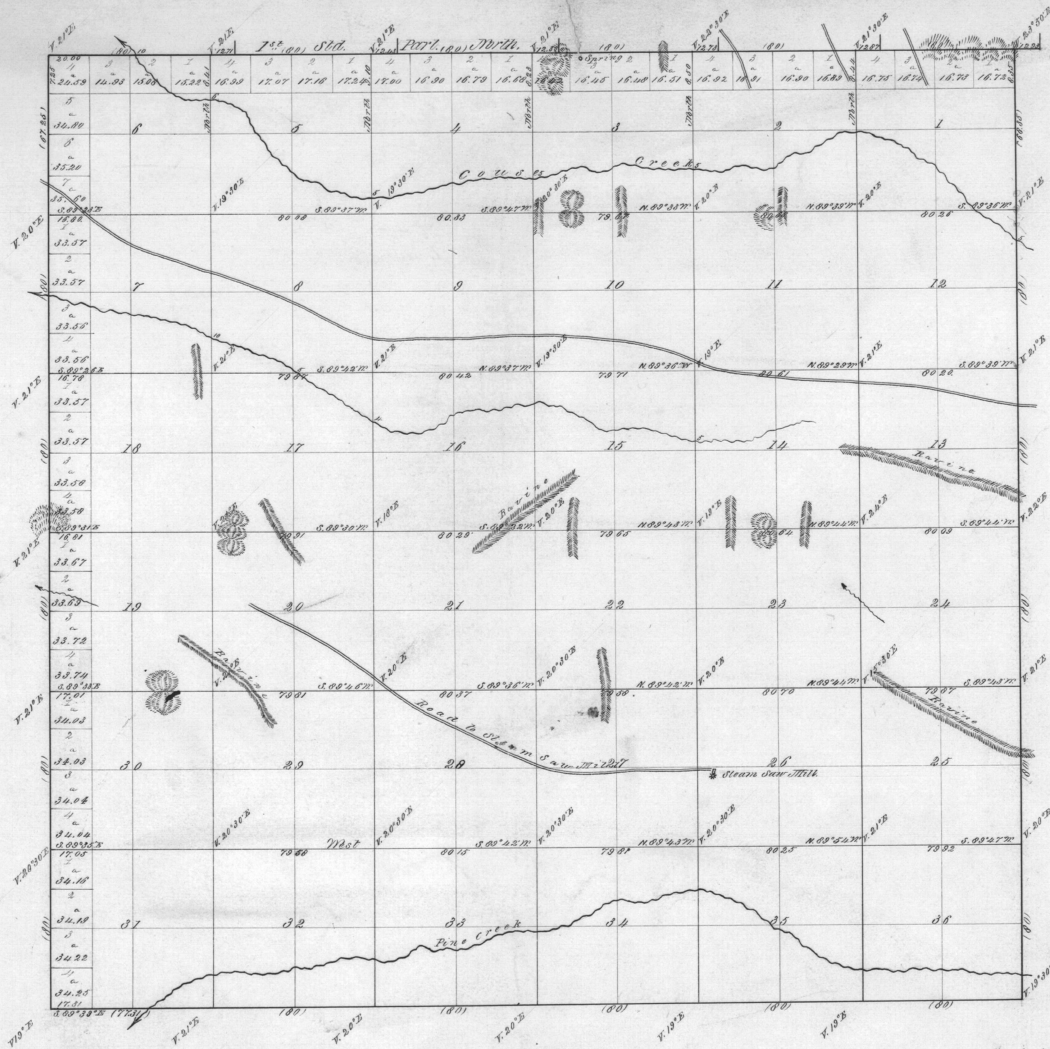
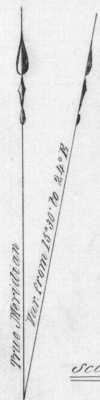


Township No. 4 North, Range No. 36 East Will. Mer.



Scale 40Chs to an Inch



Lines	Contractor	Contract		Acres surveyed		Completed	
		No.	Date	Mo.	Sq. Yds		
Subdivisions	W. H. Odell	112	July 2 ^d 1868	63	72	60	Oct. 10, 1868
Total Acres 22,648.03							

The above map of survey of the subdivisional lines of T. 4 N. R. 36 E. Will. Mer. Oregon, is strictly conformable to the original field notes of the survey thereof, on file in this office, which have been examined & approved.
 Surveyor General's Office,
 Eugene City, Feb. 16th 1867

E. L. Applegate
 Surveyor Gen. of Oregon.