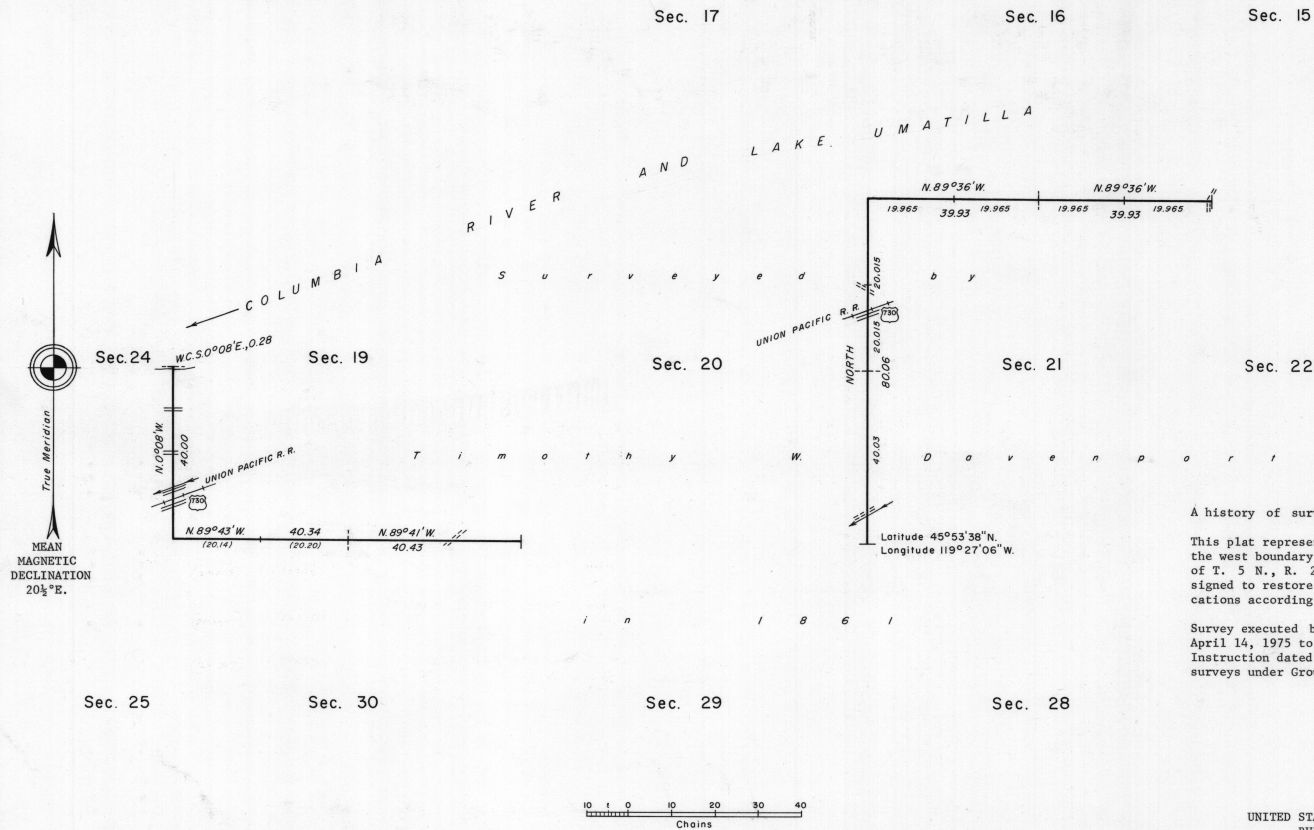


TOWNSHIP 5 NORTH, RANGE 27 EAST, OF THE WILLAMETTE MERIDIAN, OREGON
DEPENDENT RESURVEY



A history of surveys is contained in the field notes.

This plat represents a dependent resurvey of a portion of the west boundary and a portion of the subdivisional lines of T. 5 N., R. 27 E., Willamette Meridian, Oregon, designed to restore the corners in their true original locations according to the best available evidence.

Survey executed by Frank A. Tuers, Cadastral Surveyor April 14, 1975 to September 12, 1975, pursuant to Special Instruction dated April 11, 1975, which provided for the surveys under Group No. 864, Oregon.

UNITED STATES DEPARTMENT OF THE INTERIOR
BUREAU OF LAND MANAGEMENT
Washington, D.C. October 4, 1977

This plat is strictly conformable to the approved field notes, and the survey, having been correctly executed in accordance with the requirements of law and the regulations of this Bureau, is hereby accepted.

For the Director

Acting Chief, Division of Cadastral Survey

"Suspended October 26, 1999, see File 9632 (OR957)"
"Suspension Lifted, July 3, 2003, File 9632 (OR957).
Refer to plat accepted June 4, 2001."