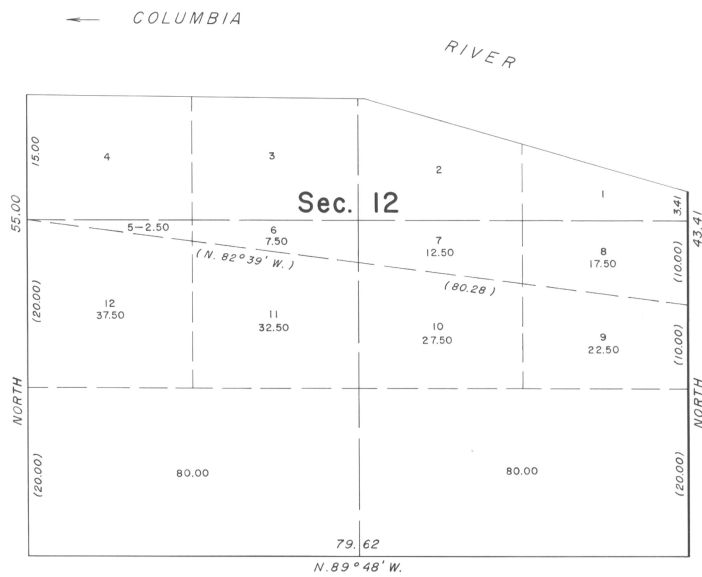


TOWNSHIP 5 NORTH, RANGE 28 EAST, OF THE WILLAMETTE MERIDIAN, OREGON.  
SUPPLEMENTAL PLAT



This plat, showing amended lottings in section 12, Township 5 North, Range 28 East, Willamette Meridian, Oregon, is based upon the plat approved December 7, 1861.

UNITED STATES DEPARTMENT OF THE INTERIOR  
BUREAU OF LAND MANAGEMENT  
Washington, D. C. August 3, 1959

This plat, showing amended lottings, is based upon the official records, and having been correctly prepared in accordance with the regulations, is hereby accepted.

For the Director

*Earl G. Harrington*  
Cadastral Engineering Staff Officer