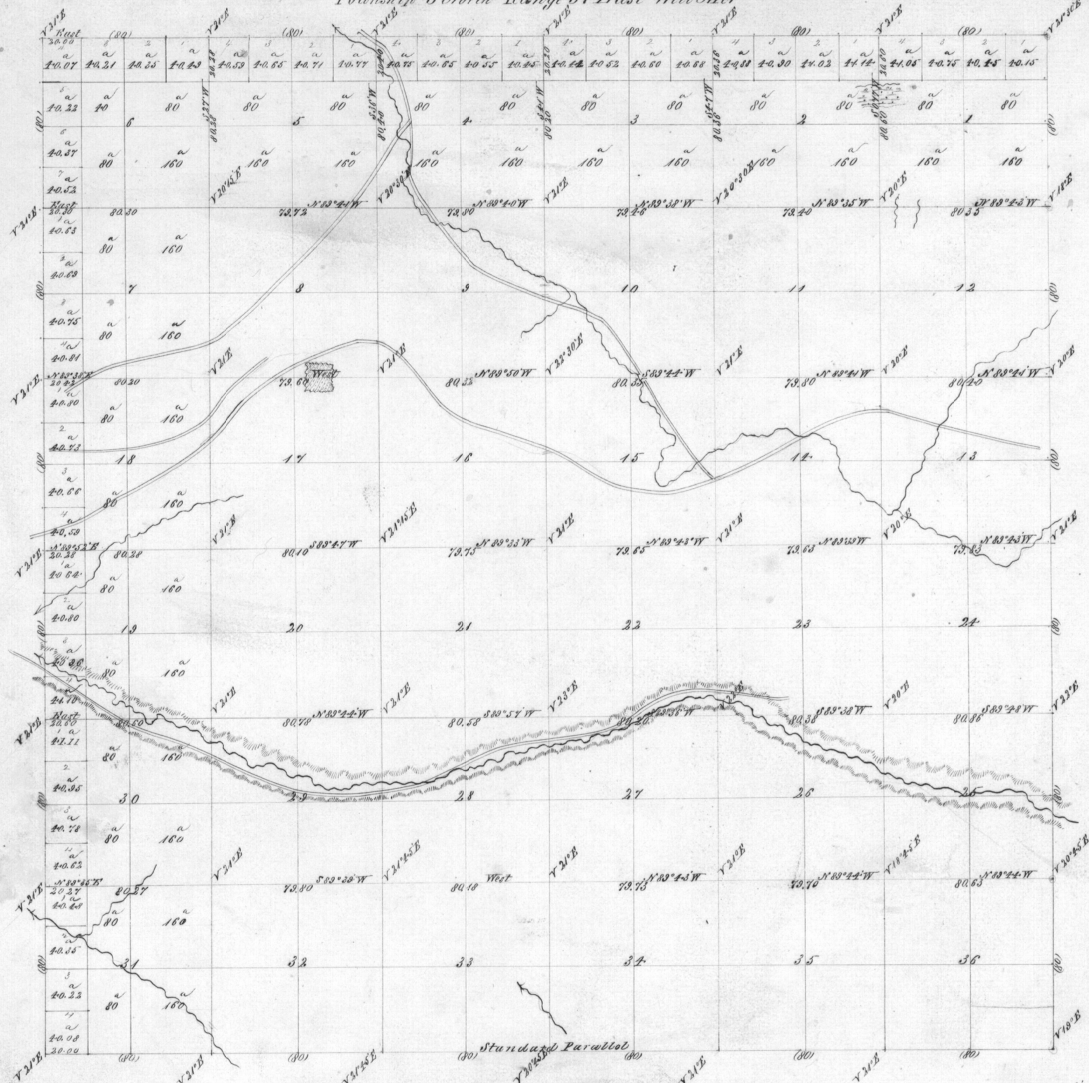


Township 5 North Range 37 East Willamette

Area	
Sections	Acres
1	642.40
2	642.34
3	642.24
4	642.40
5	642.73
6	642.33
7	642.38
8	640.00
9	640.00
10	640.00
11	640.00
12	640.00
13	640.00
14	640.00
15	640.00
16	640.00
17	640.00
18	642.78
19	640.00
20	640.00
21	640.00
22	640.00
23	640.00
24	640.00
25	640.00
26	640.00
27	640.00
28	640.00
29	640.00
30	643.46
31	641.13
32	640.00
33	640.00
34	640.00
35	640.00
36	640.00
Total	33 069.08



General Description
 This Township is much broken, the best on for the timber. Pine, Fir, Spruce, Birch, Alder & Millers. A small swamp in sections 1 & 12. The western portion is more adapted to agriculture than being some good land, the much broken is settling up fast.

Scale in chains to an inch.
 Done in chains to an inch.

Lines	Contractor	Contract	Amount Surveyed	Commenced	Completed
Subdivisions	George Williams	175 July 26 1872	60 04 20	October 29 1872	December 1 1872

The above Map of the subdivision of Township 5 North Range 37 East Willamette Oregon is hereby recognized to be the original field notes of the survey thereof on file in this Office which have been transcribed and approved.
 U.S. Surveyor General's Office
 Oregon City Oregon
 September 12th 1875

W. H. Cole
 Surveyor of Oregon