

MAP OF THE TOWN OF PENDLETON OREGON

Drawn By Order Of The COMMON COUNCIL AUG. 1881

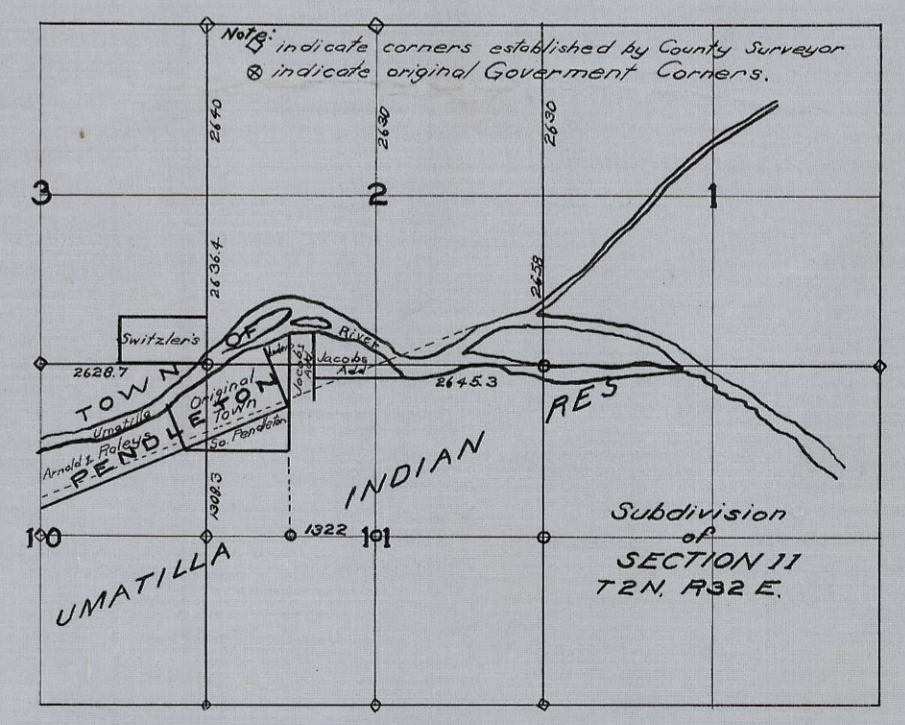
H.D. Chapman C.E. & Surv'r Scale 1 inch = 300 Feet

Filed for record and recorded in book 1 of deeds at page 682.

I hereby certify that this map is made in accordance with the survey made by me in August 1881 and by said survey the monuments shown hereon were duly established H.D. Chapman C.E. & Sur.

County Surveyors Office Umatilla Co. Ogn. Pendleton Sept 22 1881.

I hereby certify that Section 11 of T2N. R32E. was subdivided by me in August 1881 and corners established as shown on the annexed diagram and that the original field notes of said survey are on file in this office J.H. Riley Co. Surveyor By H.D. Chapman Dept.



RESERVATION

Hartman Abstract Co., Pendleton Oregon.

05-68-5

13.50