

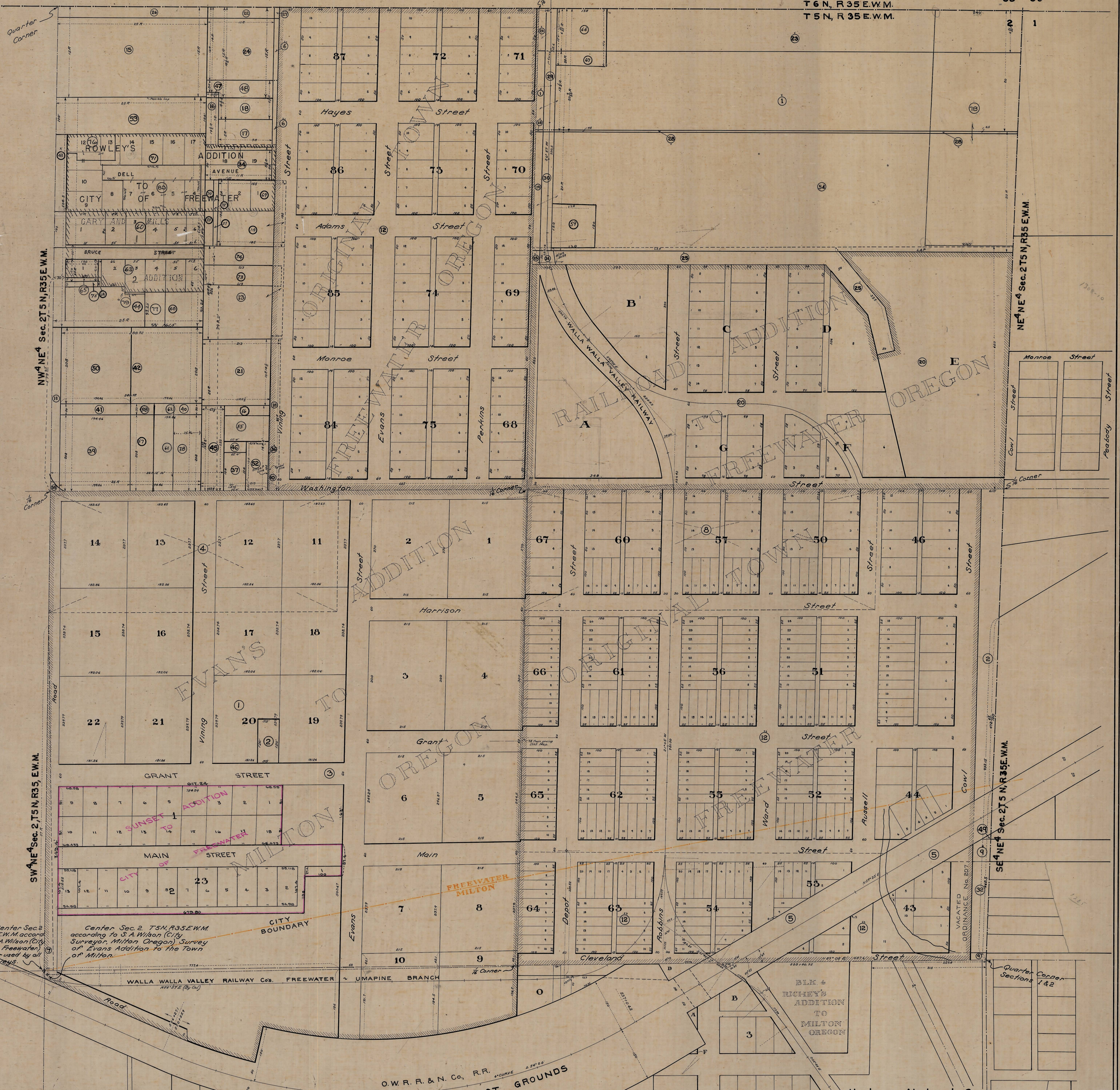
ME'S-2132

NE 4 SECTION 2 T 5 N., R 35 E. W. M.

Scale 1 inch = 100 feet

T 6 N., R 35 E. W. M.
T 5 N., R 35 E. W. M.

35 36



True Center Sec. 2 T 5 N, R 35 E. W. M. according to L.A. Wilson (City Engineer Freewater) Also corner used by all R.R. surveys.

Center Sec. 2, T 5 N, R 35 E. W. M. according to S.A. Wilson (City Surveyor, Milton Oregon) Survey of Evans Addition to the Town of Milton.

CITY BOUNDARY

O.W.R.R. & N. Co., R.R. DEPOT GROUNDS

Hartman-Abstract-Company
Pendleton Oregon

99