

PLAT AND RECORD OF SURVEY No. 173

Course Degree Minutes Chain Links

Request of Geo. Sargent, et al, April 27<sup>th</sup> 1885.

To reestablish 1/4 Sec. Cor. bet Secs. 35 & 36  
T. 4 N., R. 35 E.

Assisted by Hamilton Gantz and Chas. A. Winn, sworn  
chaimmen, I commence at cor. for Secs. 35 & 36 on 1<sup>st</sup> Stand,  
Par. N., and finding that I could see to the cor. for Secs.  
25, 26, 35 & 36 I sent H. Sargent to place flag at this corner,  
whence I run on true line bet Secs. 35 & 36

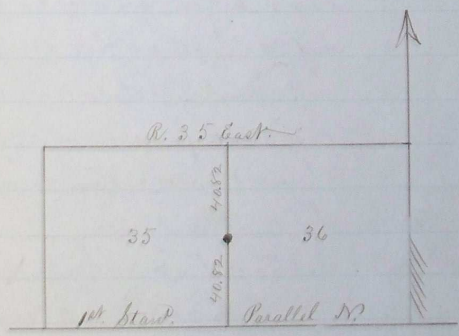
110 Set temp 1/4 sec. cor in old fence row, E & W, and from which  
an angle in said fence row, claimed to mark position of  
original cor. bears N. 87° 36 E. 178 links

110 30 A point 45 links east of stone cor. set by Mr. Coffey, Sec. 36.

81 64 Stone cor for Secs. 25, 26, 35 & 36

I move temp cor. N. on true W. bndy. of sec 36, 82 links, and  
set a basalt stone 18x12x10 ins marked 1/4 on west face.

Request of Geo. Sargent, Jas. M. Selby, Matt Harris & Wm. McQueen



W. J. Chalk, Suror. Umatilla Co. Oregon.  
Per. Jas. C. Arnold, Dpty.