

Mr. Jos. Green

Sec. 27. T. 4 N. R. 35 E.

May 31<sup>st</sup> 1881

After having qualified E. Thomas  
+ A. Boy as chainmen. I assisted by  
J. C. Arnold Deputy County Surveyor,  
Proceeded to make the following Survey in ac-  
cordance with a deed given by  
To Joseph Green.

Beginning at the S.W. Cor of the S.E.  $\frac{1}{4}$  of Sec 27  
T. 4 N. R. 35 E. Running thence Var. 21 $\frac{1}{2}$

Course	Degrees	Minutes	Chains	Links	Description
E. 89 <sup>00</sup>	7	75			Set post on South line of Sec 27. Raised mound &c From which we run
N. 01 <sup>00</sup>	8	00			Set post. Raised mound + dug trench from which we
S. 7 <sup>00</sup>	7	75			which I run + set post. Raised mound dug trench &c from which I run
S. E. 01 <sup>00</sup>	8	00			To place of beginning - Said tract of land containing 6 $\frac{1}{5}$ Acres as per plat recorded on page 59.

I hereby certify that the above  
notes and plat of same on page 59 are correct  
as by me determined May 31<sup>st</sup> 1881

J. H. Raley - Co Surveyor  
Lawatilla Co. Ky.

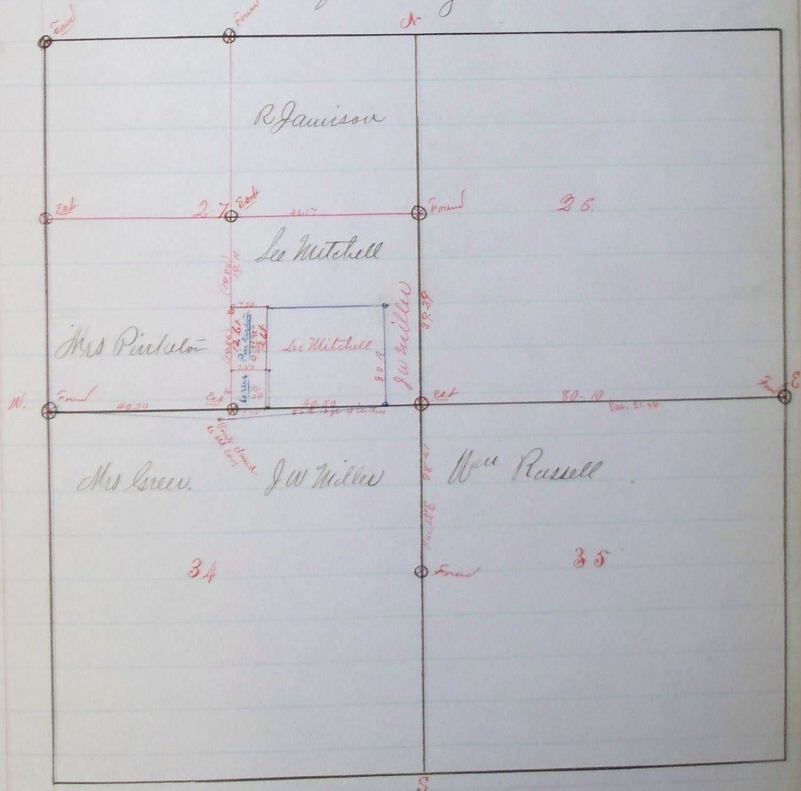
Recorded June 3<sup>rd</sup> 1881

J. H. Raley Co Surveyor

PLAT AND RECORD OF SURVEY No. 7117

Course Degree: Minutes. Chains. Links.

John W Miller lease  
 at a point 30 Rods East of SW Cor of the  
 SE 1/4 of Sec from which we run East  
 a distance of 86 Rods 12 feet + 4 inches and  
 set post raised mound + dug trench from  
 which we run due north a distance of 83 Rods  
 and set stakes by request said point being  
 agreed upon as a corner between Mitchell + Miller  
 the only parties interested. Witnesses John M. Gough  
 lin. Enoch Russell + J. C. Arnold. Corners were  
 found lines run + corners established as per  
 above notes + the following plat,



Recorded June 8<sup>th</sup> 1881  
 J. W. Raley Co. Surveyors

We hereby certify that the above notes + Plat are correct  
 as by us determined May 26<sup>th</sup> + 27<sup>th</sup> 1881  
 J. W. Raley Co. Surveyors  
 J. C. Arnold, Register Oregon