

PLAT AND RECORD OF SURVEY No. 22

Survey made for M. R. Shelt ^{and J. L. Long} and W. J. Taylor

Course Degrees Minutes Chains Links

0.00 Subdivide the double East and north quarters of Sec 15
 to reestablish the N.E. Cor Sec 15 and re-establish quarter
 corner between Sec 8 and 17 all in T. 3. N. R. 33 E. April 21-22, 1911
 commencing at known Government Cor. S.E. Cor 15 = T. 3. N. R. 33 E. S. E. Cor
 thence on true line between said Cor to known gov 1/4 cor
 between sec 7 and 8. T. 3. N. R. 33 E. S. E. Cor Sec 15

North 140 Placed stone for 1/4 cor

North 80 Placed post raised mound pins for N.E. Sec 15
 East from Government. S.E. Cor Sec 15

34 7 1/2 Set 1/4 cor

East 74 7 1/2 to S.E. Cor

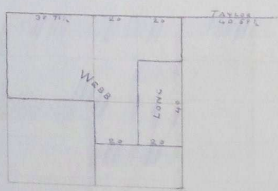
East from N.W. Cor Sec 15 35 ch set 1/4 cor

East 74 to N.E. Cor sec 15

Then bisected true lines between 1/4 corners set stone for
 true centers of sec 15

Then laid off and placed stone 1/4-1/4 corners at equal distance
 from 1/4 cor center of said bisecting true lines from these 1/4-1/4 corner
 found and placed stones for center of 1/4 Sec of the N.E. and
 S.E. 1/4 of Sec 15 T. 3 N. R. 33 E. S. E. W

East on true line 40 57 1/2 ch set stone for 1/4 cor
 between Sec 8 and 17 T. 3 N. R. 33 E. S. E. W



W. J. Taylor
 Surveyor for Oregon