

## PLAT AND RECORD OF SURVEY No. 32

Request of Thos. Lissard et al, June 21<sup>st</sup> 1888

To subdivide Sec. 18. T. 4 N. R. 37 E. N. M.

Assisted by J. E. McCoy, W. W. Miluen and Chas. Geiss, sworn chainmen, and using a Burtis improved Solar Compass. Commence at cor. to secs. 13, 18, 19 & 24, on the line bet. ranges 36 & 37 E. W. M. for T. 4 N., which is the original sec. cor., which I find as described in the notes of original survey. At true cor. point, I set a basalt stone 18 x 6 x 5 ins. mkd 6 notches on E. face, 3 notches on N., and 3 notches on S., 12 ins. in ground, by side of original post, chanced at lower end. Thence, I run, on random line, bet. ranges 36 & 37 E.

- North
- 20 Small stream in deep cañon, course S. W. - Ascend steep stony hill
- 40 Set temp.  $\frac{1}{4}$  sec. cor., on S. hill side. Find no traces of original corner.
- 60 Set temp. to sec. cor.

83.54 Int. E. & W. line 48 links west of stone cor., verified by D. Diggins, and accepted by H. Milikin, C. E. Geiss, Willis Hutch, Jno. Cimmmins and Thos. Lissard, all parties named being present. - At this point, I find, in ground, a portion of small broken stone, imperfectly mkd 7 & 12 on opposite sides, also I find charred fir, and some bits of decayed wood, which I consider Quaternary. - At true point of mkd. stone, I set a basalt stone 23 x 11 x 8 ins. mkd. 6 notches on E. face and 4 notches on S., and 2 notches on N., with + on top, 16 ins. in ground. (note: - At this cor., I find S. W. B. cut down, but stump standing; the remaining tree stand, but distances do not agree with original notes, neither do the bearings. Applying my correction's, the true cor. pt., as determined by proportionate B. S. evidence, would fall about 29 links NW of cor. as set.)

There being two different surveys of sec. 18. T. 4 N. R. 37 E. and by different U. S. D. Surveyors, both of which appear to have been approved, by Gov., I postpone further work, for the purpose of corresponding with the Dep. of Interior, concerning same. - June 22<sup>nd</sup>. 1888.

Resumed the survey, Oct. 12<sup>th</sup>. 1888.

Upon advice of Sur. Gen. D. W. Taylor, and agreement of all parties concerned, I subdivide said sec. 18. T. 4 N. R. 37 E. governed by survey made 1879 by W. S. D. Pesham.

I commence at S. E. cor. said sec. 18., which is the original sec. post in a stone mound, with 4 pine bearing trees, as per, original notes, on brow of hill facing east, (Sinai Simard and J. E. McCoy, sworn chainmen.

Course. Degree. Minutes. Chains. Links.

(Jno. Crampton and H. Millikin, sworn flagman) Thence, run on a random line, bet. Secs. 17 & 18 - Descend -  $7^{\circ}$   $19'$   $E$  (note)

440 30 Int. E. & W. line. 30 links E. of stone Sec. cor., as described in copy

I proceed to correct temp. corners, and set permanent corners, on line bet. Secs. 17 & 18, see P. preceding this, to wit:-

From  $\frac{1}{4}$  sec. cor. on W. bndy. of NW<sup>1/4</sup> of sec. 18, north 265 $\frac{1}{2}$  links, then East 36 links, and set a basalt stone, 17x10x6 ins. mkd.  $\frac{1}{4}$  on top.

From  $\frac{1}{4}$  sec. cor. on W. bndy. of sec. 18, north 177 links, and thence 24 links, and set a basalt stone, 24x8x7 ins. mkd.  $\frac{1}{4}$  on W. face, and  $\frac{1}{4}$  on top.

(note: These temp. cor. were corrected, while in the field on first survey, June 22, 1885.)

I commence at stone  $\frac{1}{4}$  sec. cor. on N. bndy. sec. 18, which I find as described in U. S. Dpty. Parish's notes (and which is 268 links south of same  $\frac{1}{4}$  sec. cor. as set by W. S. Dpty. Odell). Thence, I run, on a random line bet. Secs. 17 & 18. Ascend.

West

15 Summit.

20 Set temp.  $\frac{1}{4}$  sec. cor.

444 35 Int. N. & S. line 18 links N. of sec. cor.

I, therefore, move temp.  $\frac{1}{4}$  sec. cor. to wit: West 18 $\frac{1}{2}$  links, (43.94: 44.35 :: 20: 20.186+) and, then South, 8 links.

(44: 35: 18 :: 20.186: 0.081+) and set a basalt stone 12x11x10 ins.

mkd.  $\frac{1}{4}$  on top, on west slope. Parties concerned, agree and request that I shall make the south end of the E $\frac{1}{2}$  of NW<sup>1/4</sup> of sec. 18, the same in length as the north end of said E $\frac{1}{2}$  of NW<sup>1/4</sup> of sec. 18.

I, therefore, proceed to run right lines N. & S. and E. & W. through the center of said sec. 18, connecting opposite  $\frac{1}{4}$  sec. corners, and, at the intersection of the lines, de novo, I set a basalt stone 15x12x5 ins. mkd.  $\frac{18}{18}$  on N. face, dug pit in each  $\frac{1}{4}$  sec. cor. 5 ft. dist. A pine tree, 6 ins. dia. bears S. 71 $^{\circ}$  170 lbs. dist. A pine, 5 ins. dia. bears N. 30 $^{\circ}$  116. 200 lbs. dist. from center cor. to sec. The line N. & S. through center sec. 18, is 83.73 chs. in length, and the line E. & W. through the sec. is but 77.65 chs. in length; the point of their intersection is 42.99 chs. E. of  $\frac{1}{4}$  sec. cor. on W. bndy. of sec. 18, and 40.67 chs. S. of  $\frac{1}{4}$  sec. cor. on N. bndy. Midway bet. the center cor. and the  $\frac{1}{4}$  sec. cor. on N. bndy. of sec. 18, and

PLAT AND RECORD OF SURVEY No. 3219

Course    Degrees    Minutes    Chains    Links

true line. Set a basalt stone, 22x12x7 ins. mkd. + on top, for  $\frac{1}{16}$  sec. cor. on E. ldy. of N. 1/2 Sec. 18; from which a pine tree, 12 ins. dia. bears S 69° W. 168 lks. dist. - a pine tree, 12 ins. dia. bears S 60° 30' E. 93 lks. dist.

In a similar manner, set a basalt stone 19x15x6 ins. mkd. + on top, near E. bow of hill, on W. side of Couser creek, for  $\frac{1}{16}$  cor. on E.  $\frac{1}{2}$  of E. & W. center line, of sec. 18, from which a pine tree, 9 ins. dia. bears N. 43° W. 44 links. dist. - a pine tree 6 ins. dia. bears N. 44° 30' E. 72 links dist.

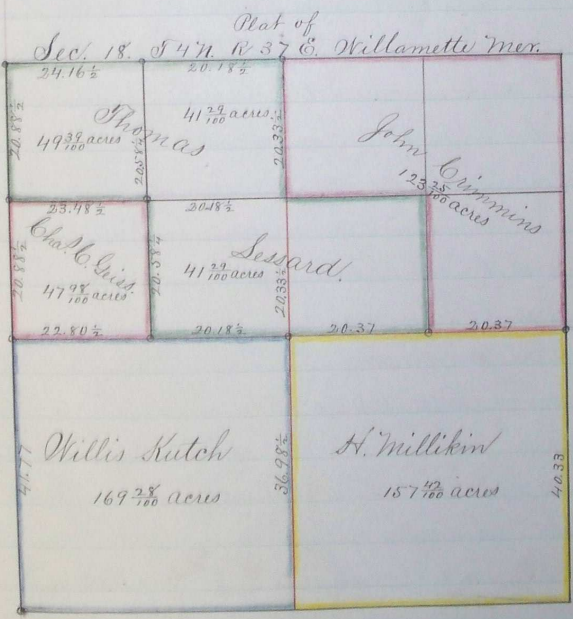
Set a basalt stone, 20x10x6 ins. mkd. + on top, in stone mound, on rocky hill side, facing E., and 120 links west of water channel in ravine, course south, for  $\frac{1}{16}$  sec. cor. on West  $\frac{1}{2}$  of center line of sec. 18.

Set a basalt stone, 14x10x6 ins. mkd. + on top, 6 links S. of fence on N. side of E. & W. lane, for center cor. to N. N.  $\frac{1}{2}$  of sec. 18, T. 4 N. R. 37 E.

Survey commenced June 21<sup>st</sup> and completed Oct. 13<sup>th</sup> 1888.

Jno. C. Arnold, County Surveyor.

Explanations  
Scale = 6 ins. to 80 chs.  
o = stone corner.  
Courses, as on all maps.



Jno. C. Arnold, County Surveyor.