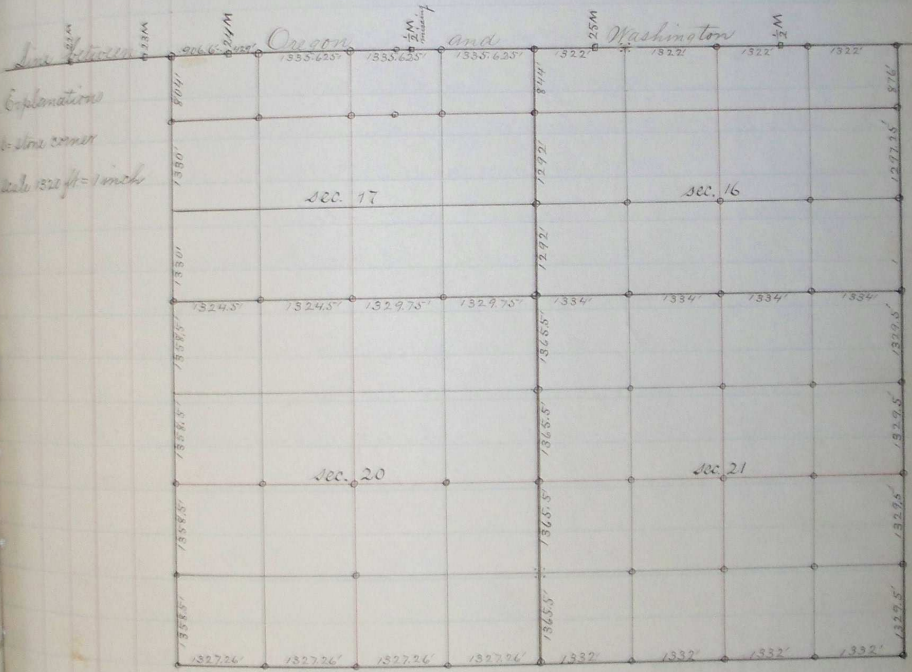


PLAT AND RECORD OF SURVEY No. 11319

Making the necessary fractional and proportional corrections, set other interior corners in said Secs. 16<sup>th</sup> & 21<sup>st</sup>, T. 6 N. R. 35 E., as shown in the plat of said sections, as before recorded. - Survey ended May 7, 1892.  
 Jno. C. Arnold, County Surveyor.

Plat of Secs. 16, 17, 20, 21 T. 6 N. R. 35 E.



Jno. C. Arnold, County Surveyor.

## PLAT AND RECORD OF SURVEY No. 54

Request of Wm. A. Welles, et al. May 9<sup>th</sup> 1892.

To subdivide sec. 17, T 67 N, R 35 E.

Assisted by J. C. Hill and Wm. A. Welles, jun., sworn chainmen, using a Mason  
manuf. theodolite, commence at cor. to secs. 16, 17, 20<sup>th</sup> & 21 (see description P. 252 of this bk)  
and run on random line bet. secs. 17<sup>th</sup> & 20.

1320 Set temp.  $\frac{1}{2}$  sec. cor.

2659<sup>2</sup> The  $\frac{1}{4}$  sec. cor. bet. secs. 17<sup>th</sup> & 20, which is a cor. previously set by me in  
the survey of road No 307, mar 26<sup>th</sup> 1888, when the following notes were taken:—

"I find original decayed baln post, lower end 12 ins. in ground, plain  
pit on E, pit on W, obliterated by travel, position of cor. verified by D. W. Mc Darnall  
and Wm. A. Welles, sr. both present. Set, at true cor. point, a basalt stone 20x5x10  
ins. 16 ins. in ground, for  $\frac{1}{4}$  sec. cor. bet. secs. 17<sup>th</sup> & 20 T. 67 N, R. 35 E, mkd. on N. face"

I therefore, move temp.  $\frac{1}{2}$  sec. cor. on E half of line bet. secs. 17<sup>th</sup> & 20, west  
on true line, 9 $\frac{1}{2}$  ft. and set stone 20x14x4 ins. 16 ins. in ground.

continuing this line bet. secs. 17<sup>th</sup> & 20

3500 Ascend

3960 Set temp.  $\frac{1}{2}$  sec. cor.

4000 Summit

5308<sup>2</sup> Int. N.  $\frac{1}{4}$  S. line 3 $\frac{1}{2}$  ft. S. of cor. to secs. 17, 18, 19<sup>th</sup> & 20.

$5308 - 2659 = 2649$ ;  $2649 \div 2 = 1324\frac{1}{2}$ ;  $1324\frac{1}{2} + 2659\frac{1}{2} = 3984$ ;  $3984 - 3960 = 24$ .

I move temp.  $\frac{1}{2}$  sec. cor. on W.  $\frac{1}{2}$  of line bet. secs. 17<sup>th</sup> & 20 west 24 ft. then  
North to true line, and set a smooth boulder 12x6x3 ins. 10 ins. in ground, above mkd. stone  
9x6x6 ins.

From 24 mile post, I run west on random state line

901 Set temp. closing cor. to sec. 17<sup>th</sup> & 18

2640 Set temp.  $\frac{1}{2}$  m. bet. 23<sup>rd</sup> & 24<sup>th</sup> mile post. original cor. not found

5076 Find a basalt stone,

5280 Set temp. 23<sup>rd</sup> mile post. no traces of the original post cor.

7920 " "  $\frac{1}{2}$  m. bet. 22<sup>nd</sup> & 23<sup>rd</sup> m. p. . . . .

10628 Int. N.  $\frac{1}{4}$  S. line 19 $\frac{1}{2}$  ft. S. of 22<sup>nd</sup> mile post, which is a basalt stone

18x8x6 ins. over lower end of original post, 15 ins. in ground, mkd. O W on top and  
22 M on west face. Making the proper correction, I set a basalt stone 14x10x8 ins.  
10 ins. in ground, for 23<sup>rd</sup> mile post on state line, mkd. 23 M on W. face.

Course	Degrees	Minutes	Chains	Links	
N. E.	0	15	52 1/2		On random line bet. Secs. 17 & 18 T. 6 N. R. 35 E. 22 <sup>nd</sup> 22 <sup>nd</sup> E. 2660 Int. 6 <sup>th</sup> W. line 292 ft. west of 1/4 sec. cor. bet. Secs. 17 & 18, which is the chanced end of original post, found 18 ins. in ground, in D. W. M. Dannald field and verified by J. H. Frizzell and Elijah S. Russell, both present, over the chanced end of original post, I set a sugar loaf, basalt stone, 14 ins. base and 10 ins. long or high, mkd. 700 W.
N. W.	2	00	50 1/2		Thence I run on rand. line bet. Secs. 17 & 18 22 <sup>nd</sup> E. 50 1/2 Int. line bet. Oregon and Washington at temp closing cor. Secs. 17 & 18. To set closing cor. to Sec. 17 & 18. 5280: 5314:: 901: 906.6'. I move temp cor. west, on true stake line 5 1/2 feet and set a smooth boulder 20x9x8 ins, 16 ins. in ground for closing cor. to Sec. (fractl.) 17 & 18 T. 6 N. R. 35 E, mkd. C.C. on S. one notch on W. and for notches on E. Set large basalt stone over old decayed post in center of center mound 8 ft. in dia. for 24 m. p. mkd. O on S. W on N. and + at true cor. on top, near pt. of D. W. M. Dannald. From closing cor. to fractl. Secs. 16 & 17, I run on true line west 1270 Foot of hill. 1320 Set temp. to sec. cor. 1875 Mud creek, 8 ft. wide, course N. W. 1980 Set temp. to sec. cor. 2640 " " " " " " 3960 " " " " " " 4436 24 m. p. on state line 5342 The closing cor. to fractl. Secs. 17 & 18. I move temp. 1320 stake 15 1/2 ft. west, and set a basalt stone 9x6x4 ins 9 ins in mkd. + on top — Move temp. 1980 stake west, on true line, and set a flat stone 14x8x3 ins 10 ins in ground, mkd. + on top. — Move temp. 2640 stakes, west, on true line, west 31 1/2 ft., and set a red porous boulder, 14x9x9 ins 10 ins in ground for sec. cor. mkd. 6 on South and + on top. — Move temp. 3960 stake, west, on true line, 42 1/2 ft. and set stone 12x9x6 ins, 12 ins. in ground, and mkd. + on top.

PLAT AND RECORD OF SURVEY No. 154

Dist.	Degrees	Minutes	Seconds	Links
-------	---------	---------	---------	-------

Draw right lines N. 4 S. and E. 3/4 W connecting opposite  $\frac{1}{4}$  sec. corners about  
 frath. sec. 17 and at their intersection, set a basalt stone 20x19x10 ins. 12  
 ins. in ground for center sec. cor. mkd. 17 on N. face, and + on top.

See plat on p. 255.

Survey commenced May 9 and ended May 11, 1892.

Jno. C. Arnold, Co. Surveyor.