

## PLAT AND RECORD OF SURVEY No. 75619

Request of Jno. Gordon et al., May 16 1892.

To subdivide sec. 32 of S. 7. R. 36 E.

Assisted by J. C. Hill and Chas. Winn, sworn chmn. I commence at cor. to sec. 31<sup>3/4</sup> 32 on S. boundary of Sp. 57 N. R. 36 E. and run on random line bet. Secs. 31<sup>3/4</sup> & 32.  $\text{wa. } 22^\circ$ 

Descend.

- 920 Ravine, course W. Ascend.  
 1900 Summit descend.  
 2000 Set temp. to sec. cor.  
 2915 Gordon gulch, course S.W.  
 4000 Set temp.  $\frac{1}{4}$  sec. cor. No traces of original cor.  
 6000 " "  $\frac{1}{6}$  " "  
 8000 " " cor. to sec. 29. 30. 31<sup>3/4</sup> & 32. No traces of original cor.

I find  $\frac{1}{4}$  sec. cor. bet. sec. 29<sup>3/4</sup> & 30, as set by E. C. Surveyor, J. H. Raley, accepted by L. A. Wilson, Surveyor, subsequently, and verified by Saml. F. Harrington, and Jno. H. James, which is an unmarked basalt boulder 18 x 12 x 8 ins, I cut  $\frac{1}{4}$  on W. face and replaced stone.

I find  $\frac{1}{4}$  sec. cor. bet. sec. 29<sup>3/4</sup> & 32, at point designated by R. M. Donthly, called for the purpose, which is the lower charred end of original  $\frac{1}{4}$  sec. post, under an old fence N. <sup>3/4</sup> S. I set over charred end of original post, a basalt stone taken  $\frac{1}{4}$  on N. size 16 x 8 x 8 ins. (+ on top), 90 links E. of water channel in a ravine course N. W.

I find  $\frac{1}{4}$  sec. cor. bet. sec. 32<sup>3/4</sup> & 33, which is the original post in mound of stone, on hill side facing S. W., and verified by Henry Reel, J. M. Kent and Saml. all present, Running the proper N. <sup>3/4</sup> S and E <sup>3/4</sup> W lines, and making proportional corrections,

I set at proper point for cor. to sec. 28, 29, 32<sup>3/4</sup> & 33 a basalt stone 30 x 8 x 6 ins, mkd. 4 notches on E. and 1 notch on S. on gentle N. E. slope, under a wire fence N. <sup>3/4</sup> S. 20 links S. of cor. fences N. S. W.

I set at proper point for cor. to sec. 29. 30. 31<sup>3/4</sup> & 32, a basalt stone 17 x 10 x 6 ins. 12 ins. in ground, mkd. 5 notches on E. 1 notch on S. and + on top. 13 lks N. of cor. of fences S. <sup>3/4</sup> E.

At place designated by Henry Reel, for cor. to sec. 32<sup>3/4</sup> & 33 on South boundary of Sp. I dig and find charred end of original post 12 ins in ground, 80 lks E. of ravine, on gentle west slope. I set over charred end of original post a

PLAT AND RECORD OF SURVEY No. 1576

Course.	Degree.	Minutes.	Chains.	Links.
---------	---------	----------	---------	--------

Stone 12x6x4 ins 10 ins in ground, mkd. 2 notches on W and 4 notches on E

Midway bet N.W. cor. and S.W. cor. sec. 32 and on true line, I set a

a basalt stone 10x6 ins 1 ins in ground, for 1/4 sec. cor. bet sec. 31<sup>st</sup> & 32, mkd 1/4 on W face and + on top.

Midway between S.W. cor and S.E. cor. sec. 32, on south endy of Sp.

I set a basalt stone 12x8x6 ins 10 ins. in ground for 1/4 sec. cor. mkd 1/4 on N and + on top.

Run straight line connecting the opposite 1/4 sec. corners above 32 and at their intersection, I set a stake for temp true center sec. 32.

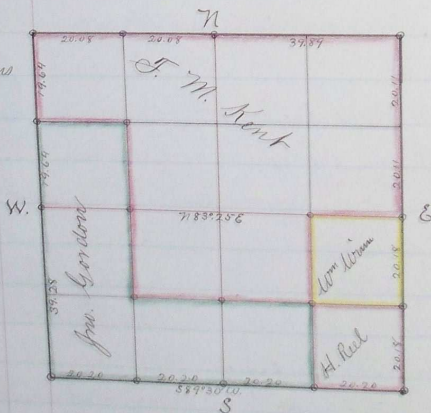
At proper points on the true lines, I set other stone corners as shown in the following plat, in which the course and length of each line is written.

Survey commenced May 16 and ended May 20 1892.

Jno. C. Arnold, Co. Surveyor.

Plat of Sec. 32 T. 57 N. R. 35 E.

Explanations  
o = stone cor.



Jno. C. Arnold, Co. Surveyor.