

PLAT AND RECORD OF SURVEY No. 72819

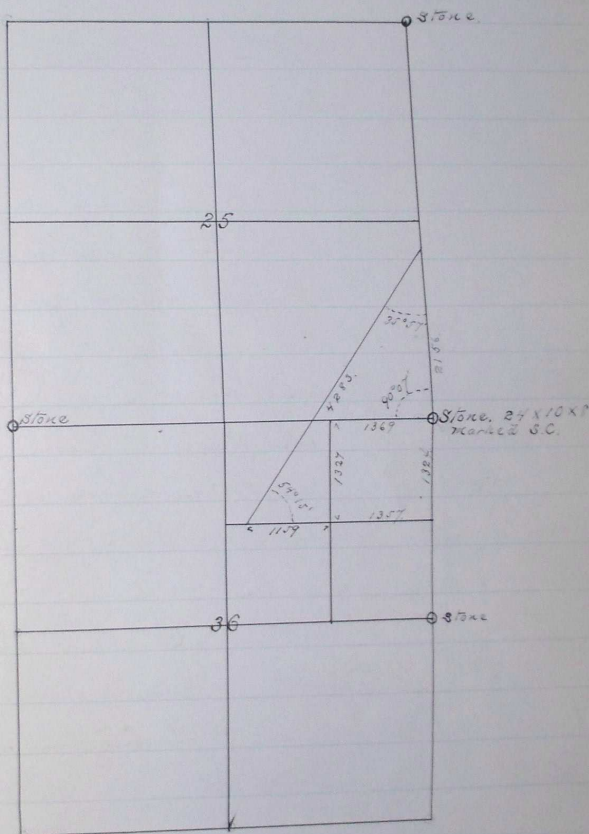
In Sections 36 & 25, T. 1 S., R. 31 E., W. 4 M.

Links.

Survey made at request of C. Cunningham
Feb. 22 & 23, 1901.

Swan Lehmann, L. Wilson

" Flagman Marsh.



Beginning at the N.E. Corner of Sec 36 T. 1, S. R. 31, E. W. 4 M. on the Range line between Ranges 31 and 32, E. W. 4 M. I then set a flag one mile north at the N.E. Corner of Sec 25.

I then returned to N.E. Corner of Sec 36 and unearthed top of old 90th Stake and planted in its place a Stone 24 x 10 x 8' 20' in the ground and marked S.C. on North face

PLAT AND RECORD OF SURVEY No. 7289

Course	Degrees	Minutes	Seconds	Links	
North			21 56		From this stone I run on true line to the center of County Road, the angle of intersection of which, with the Range line being being $85^{\circ}57'$ to the southwest.
South	$87^{\circ}33'$		15 66		I then returned to the N.E. cor of Sec 36 and obtaining a true line from a flag set at the N.W. cor of 36 I run west on true line between Sections 35 and 36 to center of County Road, Base N.E. & S.W.
			31 00		To Bank of Birch Creek near N.W.
			34 00		Begin to record.
			57 78		Stone on top of hill cor to Sec 35, 36, 37, 38.
South	$77^{\circ}58'$		13 69		Returning to N.E. Corner of 36 I run west on true line set stake for $\frac{1}{4}$ Corner.
			36 78		Returning to the N.E. cor of 36, I measure south the check distance on E line of 36. Stone $\frac{1}{4}$ Corner East line of Sec 36, and at $\frac{1}{2}$ this distance on true line
			18 04		I set stake for $\frac{1}{4}$ Cor
71	87°	12	13 57		From this stake, on true line through the center of the $\frac{1}{2}$ of Sec 36, I run set $\frac{1}{4}$ Corner Thence on same line to center of County Road, said line making angle with center line of $\frac{1}{2}$ of Sec 36 to N.E. $84^{\circ}15'$.
71	87°	12	13 57		Thence along the center line of said County Road.
71	87°	05	42 80		To a point on the E line of Sec 35

PLAT AND RECORD OF SURVEY No. 7119

Angle	Minutes	Seconds	Links

2176

North of the N.E. corner of Sec 36. T. 1. N. R. 31. E. S. 22. N. 3.

I hereby certify that the foregoing copy
of field notes are a true and correct
copy of notes of survey as made by me.

C. E. Macomber.

County Surveyor