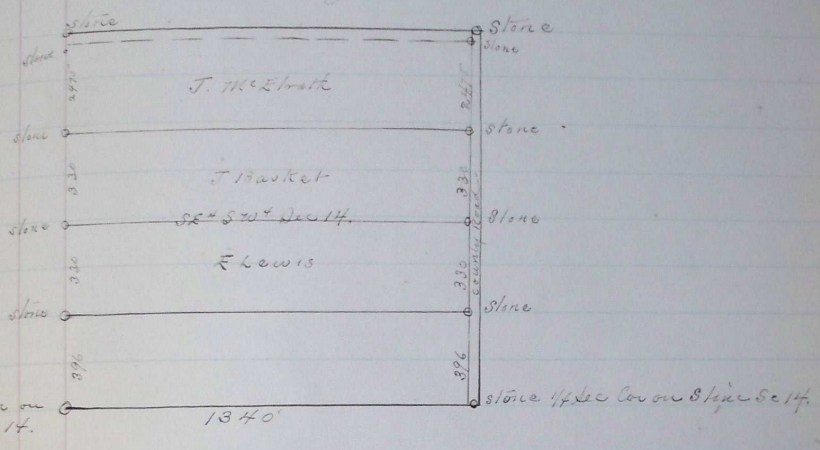


PLAT AND RECORD OF SURVEY No. 1341

Survey made at request of J. Basket Dec 27th 1870
sworn Chainmen

J. Bowman
G. H. Waller.



Required at a Stone of size and shape as may be said. Stone serves a monument to mark the 1/4 Sec Cor on the south line of sec 14 Tp 6 N. R. 34 E. W. 35. Thence

- 1340 To a Stone set for 1/4 Cor. Thence. angle 16.70°
 - 0 04E 396 Set Stone 11x7x6
 - 726 " " 12x8x6
 - 1056 " " 10x6x4
 - 13025 " " 10x5x4
- Thence returned to 1/4 Sec cor of south line of Sec 14 and turned ang. 71.11° 57' 34"
- 0 04E 396 Set Stone. 30' W. 12x6x5
 - 726 " " " " 11x7x6
 - 1056 " " " " 10x6x5
 - 13035 " " " " 10x5x4.

L. E. Macaulay
County Surveyor.