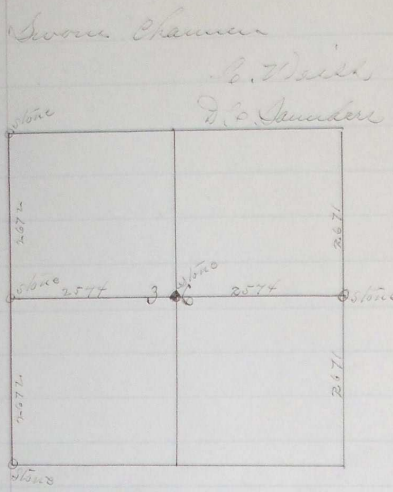


PLAT AND RECORD OF SURVEY No. 136

Survey made at request of J. Saunders

May 10, 1902.

Course. Degrees. Minutes. Chains. Links.



Beginning at the S.E. Cor. of Twp 526 N R 4800 W
Cor. true line 72 21 15

Item 7.

53 42 N. E. Cor. Sec 36. at 1/2 distance I set Stone
2 x 10 x 10' and Stake 3x3. for 1/4 Sec Cor.

I now proceed to the N.W. Cor of 36'
where on finding remains of old Stake
which location was sworn to by Saunders
and Rodman I set Stone 15 x 8 x 8 for Cor
Thence

on random line. but Sec 35 & 36

53 43 I set Stake.

53 44 The corner to Sec 35 & 36 at 1/2 dist 2672 I
set Stone mound of 3 wash Troughs. 6 x 8 x 4.
6 x 6 x 4 & 6 x 5 x 10.

I now return to 1/4 Sec Cor. on E. line of
Sec. 36 and. run. W. on random line
through. cent. of Sec 36.

51 53. Set wash line of Sec 104 1/2 of 1/4 Sec Cor
at E. end. W. lines of Sec are. straight line
and the 1/4 Sec corner on 2 x 8 line of

