

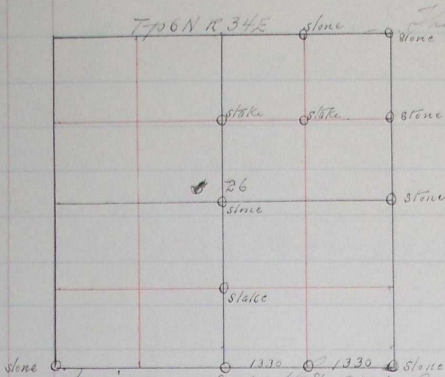
PLAT AND RECORD OF SURVEY No. 13719

Survey made at request of H. S. Rodman,

Course. Degree. Minutes. Chains. Links.

Subdivision of Sec 26. T₃₆N. R₃₄E.

Sam Chamberlain H. S. Rodman



Beginning at the N.W. cor of Sec 26. Thence four lines of Sec 26.

53 20 Intersect N and S line of 26 at N of Co to Sec 25. R. 34. E. and after making proper corrections of Sec Stone 1428.89 for 1/4 Sec cor on S line of Sec 26. From this corner I run North on true line through center of Sec 26.

13 30 Set temp 1/6 cor

36 60 " " Center

57 18 Int N. E. of Sec 26 at 1/4 Sec Cor. Thence on true line as before

13 57 1/2 Set 1/6 cor a stake

27 09 " 1/4 for center of Sec 26 a stone 16 x 10 x 9

40 23 1/2 " 1/6 cor. a stake

From 1/4 Sec cor on N line of Sec 26 run random line at right angle with true center line.

27 00 N. W. cor of Sec 26 a stone.

from same 1/4 angle from center line of Sec Right 92° 15'

27 20 Set N.E. cor of Sec 26 at corner

S

West

East

Degrees Minutes Chains Links

and at $\frac{1}{2}$ distance Set Stone for $\frac{1}{16}$ Sec. corner
 From N.E. Cor Sec 26 I run 3 on true
 line

2678 $\frac{1}{4}$ Sec corner a stone.

At 1339 I set Stone for $\frac{1}{16}$ corner
 From which I run 70 on center 1840
 line through N.E. $\frac{1}{4}$ Sec 26.

2707 Set Stone for $\frac{1}{16}$ corner in angle of road

L. E. Macomber

County Surveyor.