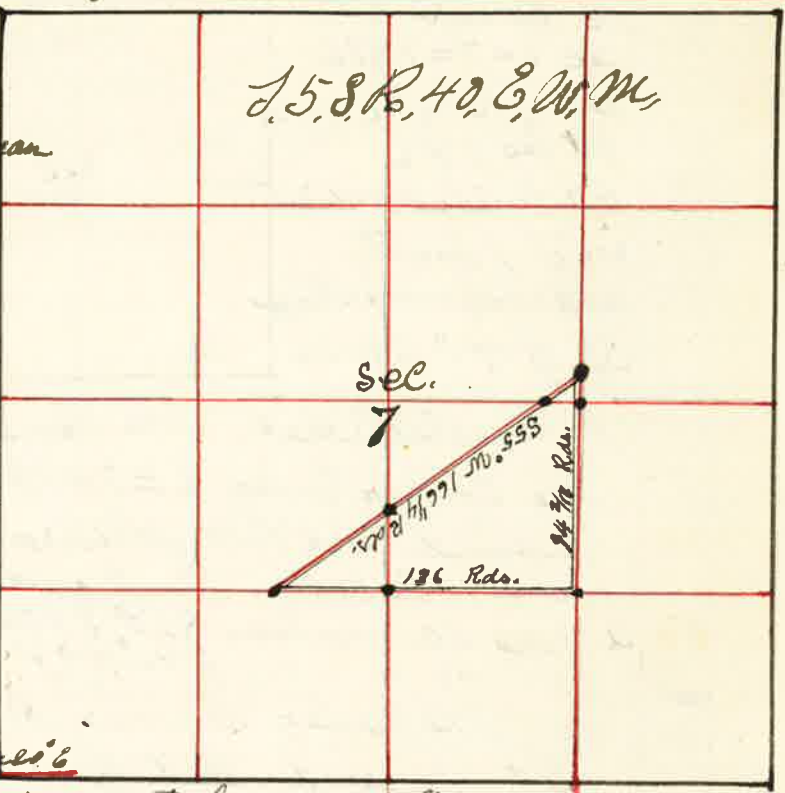


Surveyed for J. E. Howell Nov. 25 1889
By J. W. Kimbrell County Surveyor Plat No. 101

- I commenced at the corner to Sec 7=18=12 & 13 on Sude meridian thence East var 20° E
- 39 00 Rail Road S & N W
- 40 10 Set temporary 1/4 Sec corner
- 60 15 Set temporary 1/8 corner
- 80 20 Set temporary corner to Sec 7=8=17 & 18 thence East var 20° E
- 39 75 Intersect 70 lks south of 1/4 Sec corner bet Sec 8 & 17 making a distance of 5 lks as per U.S. Field Notes therefore run west-var 20° E
- 39 79 Set Stone 6 x 9 x 16 for corner to Sec 7=8=17 & 18 thence west var 20° E
- 20 04 Set stake to 1/8 corner
- 40 08 Set Stone 6 x 11 x 22 for 1/4 Sec corner bet Sec 7 & 18
- 80 17 The corner to Sec 7=18=13 & 14 on Sude meridian The 1/4 Sec corner bet Sec 7 & 18 thence North var 20° E
- 40 00 Set stake for temporary corner to Sec 7=8=17 & 18 thence North var 20° E
- 20 50 Set temporary 1/8 corner
- 40 50 Set temporary 1/4 Sec corner
- 79 90 the corner to Sec 5=6=7 & 8 intersect 54 lks East of corner from which run South on true line var 19° 45' E
- 39 96 Set Stone 6 x 6 x 48 inches in mound of Stone for 1/4 Sec corner bet Sec 7 & 8 from which a Stone in place 4 feet wide at base and 3 feet high bears S 62° 13 lks marked 1/4 S. T.
- 59 94 Set Stone 8 x 15 x 24 for 1/8 corner
- 79 93 The corner to Sec 7=8=17 & 18 thence South var 20° E
- 39 95 The 1/4 Sec corner bet. Sec 17 & 18



Surveyed for J. E. Howell Nov. 25-1889

- The 1/4 Sec corner bet Sec 7 & 8 thence west var 20° E
- 20 00 Set temporary 1/8 corner in center E 1/2 Sec 7
- 40 00 Set temporary 1/8 corner in center Sec 7
- 71 53 Rail Road runs S & N W
- 80 84 Watersect west boundary 14 lks South of 1/4 Sec corner bet Sec 7 & 8 from which run East on true line var 10° E
- 40 57 the center
- 60 70 Set Stone 8 x 10 x 25 inches for 1/8 corner in center E 1/2 Sec 7
- 80 84 the 1/4 Sec corner on East boundary Sec 7 thence North var 20° E
- 20 00 Set temporary 1/8 corner
- 29 50 County Road S 55° W
- 40 00 Watersect E & W line
- 80 50 Watersect North boundary 10 lks East of 1/4 Sec corner bet Sec 6 & 7 from which run South
- 40 43 the center Sec 7
- 60 46 Set Stone 3 x 4 x 18 inches for center S 1/2 Sec 7
- 80 50 the 1/4 Sec corner bet Sec 7 & 18 thence South var 21° 15' E
- 20 00 Set temporary 1/8 corner
- 40 50 the corner to Sec 7=18=13 & 14 from which run North var 21° E
- 20 29 Set Stone in mound of Stone for 1/8 corner thence East var 21° E
- 19 00 Rail Road S & N W
- 40 38 the center S 1/2 Sec 7 the 1/8 corner in center E 1/2 Sec 7 thence South var 20° E
- 20 00 Set temporary 1/8 corner
- 39 93 the 1/8 corner on East boundary S & N Sec 7 from which run North var 20° E
- 19 96 Set Stone 5 x 10 x 18 for 1/8 corner in center S & N Sec 7 thence North 94 2/3 Rds Set Stone 7 x 10 x 32 " S 55° W 166 1/4 " " 7 x 20 x 28 " East 136 Rds to face of Beginning to the center E 1/2 Sec 7

J. W. Kimbrell County Surveyor