

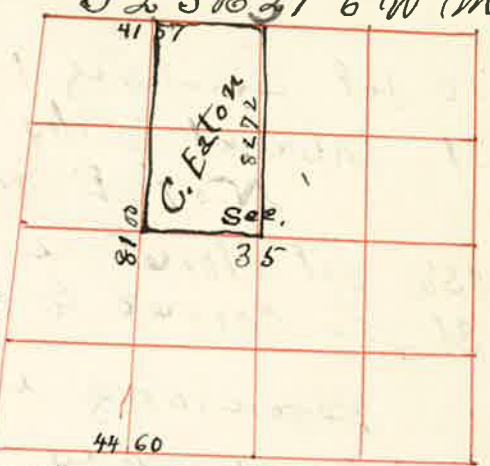
Surveyed for Clarence Eaton April 9th 1890

By J.W. Kimbrell County Surveyor Plat No 106

I commenced at the corner to Sec 26-27-34 & 35

J 2 S B 27 & W M

Thence East on Random line bet Sec 26 & 35



ascend Var 20° 8'

- 600 Top of ridge course south
- 2000 Set temporary 1/16 corner
- 2550 Spring brook 500 wide course south
- 4107 Intersect 187 lks south of the 1/4 Sec corner bet Sec 26 & 35

Thence S 88° 42' W on true line

- 2053 1/2 set post for 1/16 corner on N Bdy NW 1/4 Sec 35
- 4107 The corner to Sec 26-27-34 & 35

I commenced at the 1/4 Sec corner bet Sec 26 & 35 - Thence South through to Sec 35 -

Var 20° 8'

Descend

- 1600 Road course S & N W bottom of gulch course S, B.
- ascend
- 2000 Set temporary 1/16 corner for center N 1/2 Sec 35
- 4000 Set temporary 1/16 corner for center Sec 35
- 4350 U.P.R.R. course N & S W
- 4500 Grande Ronde river bottom
- 4652 Grande Ronde river Left Bank course N 80° 8'
- 4902 Right bank of Grande Ronde river course N 82° 8'

ascend hillside facing North Intersect south bdy 500 lks west of the 1/4 Sec corner from which

a fir 5 ins dia. frs S 85° 30' E 120 lks dist. Therefore the course of this line running through center Sec 35 would be N 3° 6' W or S 86° 6' E from the 1/4 Sec corner on S. Bdy. Sec 35 -

run west on sp. line bet Sec 28 & 35 - Var 20° 8'

- 2000 Set temporary 1/16 corner
- 4460 The corner to Sec 2-3-34 & 35

from which run East Var 20° 8'

- 2230 Set post for 1/16 corner from which a pine 24 ins dia. frs N 41° 8' 22 lks dist.
- a " 22 " " " S 61° W 48 " "

4460 The 1/4 Sec corner from the 1/16 corner on S. Bdy SW 1/4 Sec 35 - I run N 01° 53' E on true subd. line Var 16° 53' E

ascend

- 368 ledge of rock 20 feet high
- 530 Var 20° 07' E
- 1100 Var 19° 23' E
- 1500 Var 23° 53' E
- 2150 Right bank of Grande Ronde river course East
- 2380 Left " " " East
- 3048 Bluff
- 3156 Up Rail Road course E and W
- 3990 Slough 410 lks across
- 7300 ascend steep hillside
- 8100 The 1/16 corner on North Bdy NW 1/4 Sec 35 - from center W 1/2 Sec 35 - thence west Var 20° 8'

2100 The 1/4 Sec corner bet Sec 34 & 35 - from which a pine 12 ins dia. frs. S 63° 8' 32 lks dist. a fir 5 " " " North 80 lks dist.

John W. Kimbrell County Surveyor