

Surveyed for Sam Charles & John Bryant Apr. 25<sup>th</sup> 1890

by J.W. Kimball county Surveyor Plat No 108

T 6 S R 38 E W M

I commenced at the corner to Sec 2-8-10 & 11 a post from which in stone mound a line 20 ins to North 80 lbs dist a line 20 ins to S 64° W 46 "

5 00 Woolf creek 30 lbs wide C. SW  
20 00 Set temporary 1/16 corner  
39 90 Intersect 90 lbs South of the 1/4 Sec corner bet Sec 2 & 11 found old mound dug up old point of charred stake, and set stone 15x7x6 ins marked 1/4 on North face suspended and bolt of stake 12 ins deep under stone corner

80 86 Intersect 172 lbs South of the corner to Sec 1-2-11 & 12 I there have a falling of 45 lbs N and 5 lbs W to back 20 chs on first 1/2 mile I commenced at the 1/4 Sec corner bet Sec 10 & 11 thence East through center of Sec 11 Var 20° E

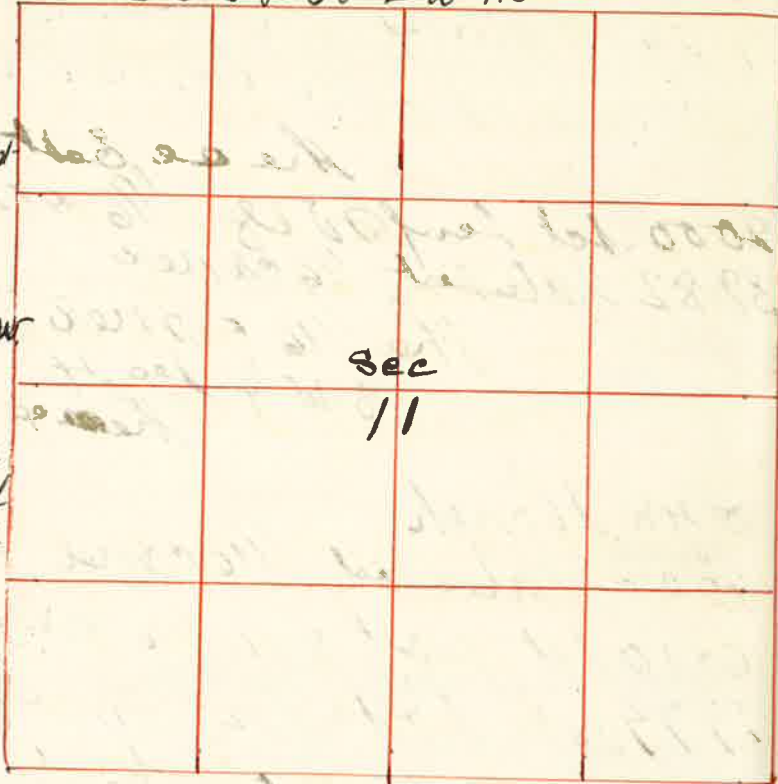
20 00 Set temporary 1/16 corner for center W 1/2 Sec 11  
21 66 Woolf creek 180 lbs wide runs S. E.

40 00 Set temporary 1/16 corner for center Sec 11

60 00 Set temporary 1/16 corner for center S 1/2 Sec 1

80 85 Intersect 10 lbs North of the 1/4 Sec corner bet Sec 11 & 12 I therefore have a falling of 16 1/2 lbs S 8 1/2 lbs South to back 20 chs I commence at the 1/4 Sec cor bet Sec 11 & 14 thence North through center Sec 11 Var 20° 30' E

20 00 Set temporary 1/16 corner for center S 1/2 Sec 11  
24 50 fence course E & W



26 00 Woolf creek 50 lbs wide runs East  
40 10 Intersect true line of W line 38 lbs East of 1<sup>st</sup> stake on S 8 1/2 lbs  
Set Post for center Sec 11 marked 1/16 C.S. for from which

a pine 10 ins dia bet S 22 1/2° W 192 lbs distant marked 1/16 C.S. B. T.  
80 43 The 1/4 Sec corner bet Sec 2 & 11 I therefore have a falling of 5 lbs North to back rock on first 1/2 mile and 16 1/2 lbs North on last 1/2 mile

I commenced at the corner to Sec 10-11-14 & 15 thence run East bet Sec 11 & 14  
20 00 Set temporary 1/16 corner  
40 26 Intersect 50 lbs North of the 1/4 Sec corner bet Sec 11 & 14 I therefore have a falling of 18 lbs E & 25 lbs N to each 20 chains  
The 1/4 Sec corner bet Sec 10 & 11 thence South bet Sec 10 & 11 Var 19° E

20 00 Set temporary 1/16 corner  
39 97 The corner to Sec 10-11-14 & 15 North on true line bet Sec 10 & 11  
19 98 1/2 Set 1/16 corner on W body SW 1/4 Sec 11 thence East through center SW 1/4 Sec 11

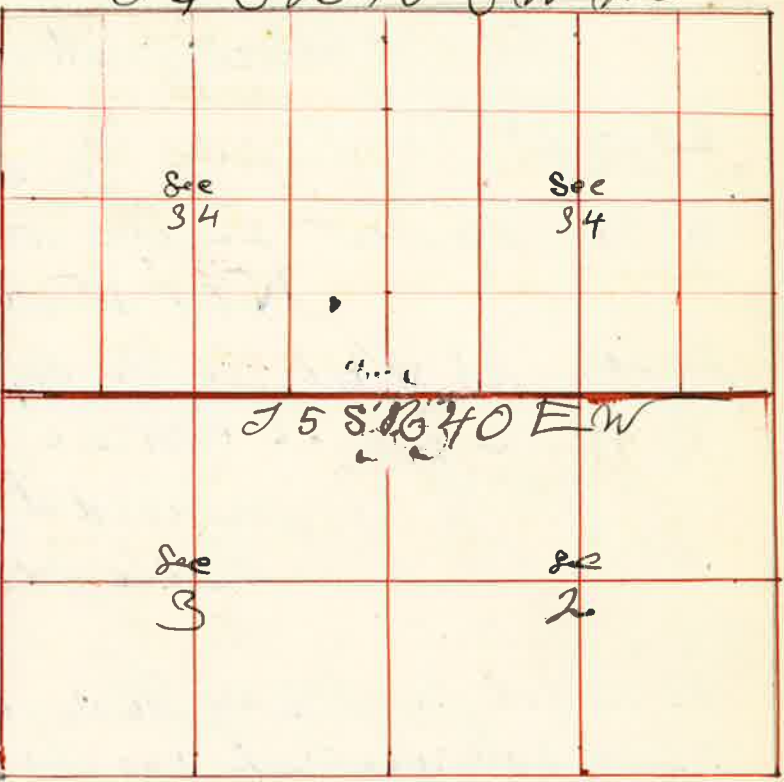
20 00 Set temporary 1/16 corner  
40 46 The center S 1/2 Sec 11 from which I run West on true line

20 23 Set Post marked 1/16 for center SW 1/4 Sec 11  
40 46 The 1/16 corner I commenced at the 1/4 Sec corner bet Sec 11 & 14 thence East bet Sec 11 & 14 Var 20° E

20 50 Set temporary 1/16 corner  
 37 50 Thence South & East supposed by letters to  
 be the original corner to Sec 11-12-13 & 14  
 I extend my line East and at  
 40 50 the 1/4 Sec corner set Dec 12 & 13  
 I therefore run West and at  
 40 00 set stake for the corner to Sec 11-12-13 & 14  
 Thence West bet Dec 11 & 14  
 and at  
 18 75 set post for 1/16 corner  
 37 50 the 1/4 Sec corner set Dec 11 & 14  
 John W. Kimbell County Surveyor

Surveyed for Ed Bemilard May the 3<sup>rd</sup> 1890  
 by J.W. Kimbell County Surveyor Plat No 109

J 4 S 16 40 S W M  
 I commenced at the corner to Sec 2-3-34 & 35 on  
 the line bet 24 & 25  
 & 16 40 E  
 thence East bet Dec 28 & 35 Var 20° 45' E  
 20 50 Set temporary 1/16 corner  
 40 35 the 1/4 Sec corner bet Dec 28 & 35 -  
 50 35 top of rocky cliff  
 50 50 descend  
 58 50 top of Hill  
 80 35 the corner to Sec 1-2-35 & 36



I commenced at the 1/4 Sec corner bet Dec 28 & 35  
 Thence North through center Sec 35  
 Var 20° 15' E

20 50 Set temporary 1/16 corner for center Sec 35  
 40 50 Set temporary 1/16 corner for center Sec 35  
 60 50 Set temporary 1/16 corner for center N 1/2 Sec 35  
 80 10 I intersect 8 lks west of the 1/4 Sec corner  
 bet Sec 26 & 35

I commenced at the corner to Sec 26-27-34 & 35  
 Thence South bet Dec 34 & 35  
 Var 19° E

20 50 Set temporary 1/16 corner  
 39 68 I intersect 12 lks west of the 1/4 Sec bet Dec 34 & 35  
 Thence No 11 W on line line  
 19 84 set post in mid of stone for 1/16 corner  
 39 68 the Sec cor