

By J.W. Kimbrell Deft Co. Surveyor Plat No 34

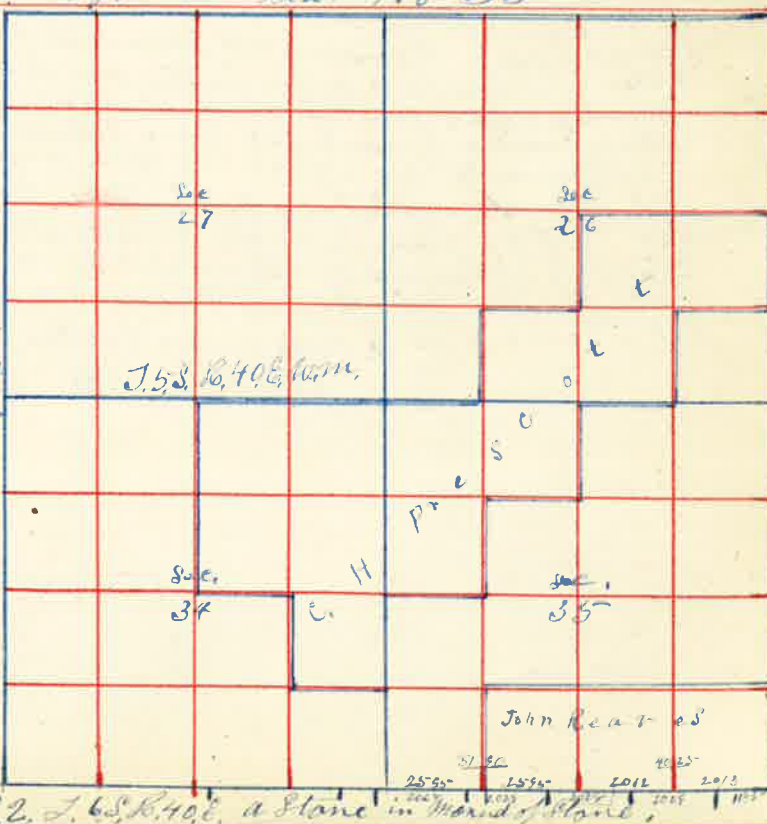
I started at the N.E. corner of Sec. 16 in T.4.S. R.39. E.10th.
 Thence South var 20° 30' E at 20 chains set post for temporary 1/4 corner and at 40 chains set post for temporary 1/4 sec. corner between sec 15 & 16 and at 8088 chains intersect E & West line 50 lks West of corner to 15-16=21822 from which I run North on true line and at 4044 chains set post marked 1/4 sec. West face in mound of Stone for 1/4 sec corner between Sec. 15 & 16. and at 1066 chains set Stone marked 1/4 on West face for 1/4 corner at 8088 chains the corner to Sec 9-10=15816 a Stone marked in mound of Stone
 J.W. Kimbrell Deft Co. Surveyor



Surveyed for C.H. Prescott & John Reeves May 23rd 1888

By J.W. Kimbrell Deft. Co. Surveyor Plat No 35

I started at the 1/4 sec. corner between sec 34 & 35 in T.5.S. R.40. E.10th.
 Thence South var 20° E at 20 chains set stake for temporary 1/4 corner at 40 chains intersect township line 112 links West of corner to sec 34 & 35 from which I run North at 20 chains set post in mound of Stone.
 I started at the S.E. corner Sec 34 on Standard Parallel. Thence East at 20 chains set stake for temporary 1/4 corner at 40 chains set temporary 1/4 sec corner on North side of Sec 2 and at 5190 chains the 1/4 sec corner on South side Sec. 35 Making an error of 1190 chains in South Boundary of West 1/2 Sec 35 Thence continue East and at 7190 chains set stake for 1/4 corner at 9215 chains the corner to Sec 35 & 36. From which I run West on true line and at 1185 chains re-established corner to sec 15 & 2. J. 6, S. R. 40, E. a Stone in mound of Stone.



Surveyed for C.H. Prescott & John Reeves May the 23 1888

Thence West from N.E. corner Sec 2 on 1st Standard Parallel South at 2027 chains set Stone for 1/4 corner on N. side of Sec 2 and at 2840 a Stone marked 1/4 for 1/4 sec corner on South side Sec 2 and at 5435 chains set Stone for 1/4 corner on N. side Sec. 2 and at 5435 chains set Stone for 1/4 corner on South side S. 10 1/4 Sec 35 and at 6086 chains set Stone for 1/4 corner on North side N.W. 1/4 sec. 2 and at 8030 chains the corner to Sec 34 & 35 and at 8115 chains the corner to Sec 2 & 3.
 I then started at S.E. corner Sec 35 and at 8714 chains the corner to Sec 26 at 4400 chains the 1/4 sec corner on East side Sec 35 and at 8714 chains the corner to Sec 25=26-35 & 36 Thence North at 20 chains set stake for temporary center Sec 26 from which I run West at 40 chains set stake for temporary center Sec 26 and at 9287 chains I intersect North of South line 488 links North of 1/4 sec. corner on West side Sec 26. from which I run North 86° 30' East on true line and at 5467 chains the center Sec 26 and at 9287 chains the center Sec 26.
 I started at 1/4 sec. corner on South side Sec 26 Thence North var 20° East at 20 chains set post for temporary 1/4 corner and at 3650 chains the center Sec 26 and at 8050 chains the 1/4 sec corner on North side Sec 26 from which I run South var 20° E and at 4400 chains set Stone for center Sec 26 and at 6225 chains set stake for 1/16 corner and at 8050 chains the 1/4 sec corner on South side Sec 26 Thence East var 20° E at 20 chains set post at 410 chains the sec corner to Sec 25=26=35 & 36 from which I run West at 2050 chains set post in mound of Stone at 4100 chains the 1/4 sec corner on South side Sec 26 Thence West at 20 chains set stake for 1/4 corner at 5285 chains intersect North and South line Sec 460 links North of corner to 36-27=34835 from which I run North 83° E on true line and at 2642 chains set Stone for 1/4 corner on North side N.W. 1/4 Sec. 35 at 5285 chains on North side Sec 35 from which I run South var 20° E at 20 chains set temporary stake for center N.W. Sec 35 and at 40 chains set stake for temporary center and at 60 chains set temporary stake for center S.W. Sec 35 at 8620 chains the 1/4 sec corner on South side Sec 26 from which I run North at 2112 chains set Stone in mound of Stone for 1/4 corner in S.W. Sec 35 at 4225 chains set stake for center Sec 35 at 6423 chains set stake for center North 1/2 Sec. 35 The 1/4 sec corner on West side Sec 35 Thence East at 20 chains set post for 1/4 corner at 5260 chains the center Sec 35 from which I run West and at 2630 chains set stake for corner in center N.W. Sec 35 Thence South 2062 chains the center S.W. Sec. 26 at 4125 chains on South side S.W. 1/4 Sec 35 I started at S.E. corner Sec 34 Thence West at 20 chains set stake at 4010 chains the 1/4 sec corner on South side Sec 34 Thence North through center Sec 34 at 20 chains set stake for 1/4 corner at 40 chains set stake for center at 8040 chains the 1/4 sec corner on North side Sec 34 45 lks East of corner.
 I started at 1/4 sec corner on East side Sec 34 Thence West through center at 20 chains set post for 1/4 corner at 4036 the center at 8020 chains 1/4 sec corner on West side Sec 34 95 lks South of corner from which I run East on true line and at 3984 chains the center at 6002 chains the center E 1/2 Sec 34 Thence South 3990 chains center S.E. 1/4 Sec 34

J.W. Kimbrell Deft Co. Surveyor