

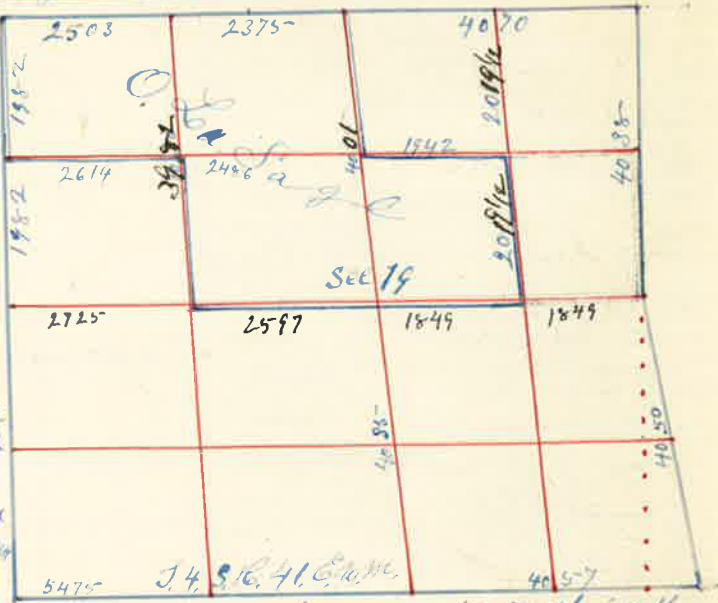
Surveyed for O. LaSage July the 13 1888

By J.W. Kimbrell County Surveyor Plat No 40 Sec 32

For the Re-establishment of the Corner to Sec 13=24=18819 I started at the 1/4 sec corner between Sec 13 & 24 thence north on Range line var 20° 15' 2000 chains set post for temporary 1/4 corner 4000 chains set post for temporary 1/4 corner 6000 chains set post for temporary 1/4 corner 7928 chains 1/4 sec corner between Sec 13 & 19 making a deficiency of 72 links in the whole distance U.S. Survey, I therefore run south 1982 chains set stone 24x21 in mound of Stone for 1/4 corner 3964 chains planted Stone 8x7x11 inch for corner to Sec 13=24=18819 5946 chains set stone for 1/4 corner in mound of Stone 7928 chains 1/4 sec corner between Sec 13 & 19

The N.W. corner of Sec 19 thence East var 21° E 2128 chains set post for temporary 1/4 corner 4878 chains the 1/4 sec corner on North side Sec 19. making an error of 750 links U.S. Survey I therefore run west 2375 chains planted Granite Stone 6x7x12 inches for 1/4 corner from which a Pine 30 inches dia. bears S 11° W 665 links for 1/4 corner on North side Sec 19 thence East 555 chains bearing 700 links across 2000 chains set post for 1/4 corner 4070 chains the N.E. corner Sec 19 from which I run west 2025 chains set post for 1/4 corner. The N.E. corner Sec 19 thence I run south var 20° E 4038 chains 1/4 sec corner on East side Sec 19. thence South var 20° E on blazed line 40 chains intersect South boundary of Sec 19 664 links west of corner to Sec 18=20=29830, from which I run North 9 1/2° W on true line var 20° E 4050 chains 1/4 sec corner

The S.E. corner Sec 19 thence West var 20° 30' E 4057 chains 1/4 sec corner a Stone in mound of Stone 9532 chains the corner to Sec. 24=25=19830 making an error of 1387 chains U.S. Survey Notes The 1/4 sec corner on North side Sec 19 thence South 20 chains set stake 40 chains set stake 8120 chains intersect South boundary Sec 19 605 links west of 1/4 sec corner on East side Sec 19 thence West 20 chains set post 40 chains set post for temporary center 60 chains set post for temporary 1/4 corner 9030 chains West boundary Sec 19 from 80 links South of 1/4 sec corner from which I run East on true line var 19° E 2725 chains set post for 1/4 corner from which a Pine 10 inch bears North 251 links 5322 chains the center of Sec 19 set stone 15x9x9 from which a Pine 12 inch bears N 47° 45' W 179 links set 7171 chains set post in mound of Stone from which a Pine 14 inch bears S 25° E 21 links thence North 2031 chains set post for center N & S from which a stam oak 4x12x28 in dia from which a Pine 20 in dia bears N 65° 30' E 85 links 4425 chains set stake to center N & S from which a Pine 18 inch bears S 24° 15' West 93 links distant

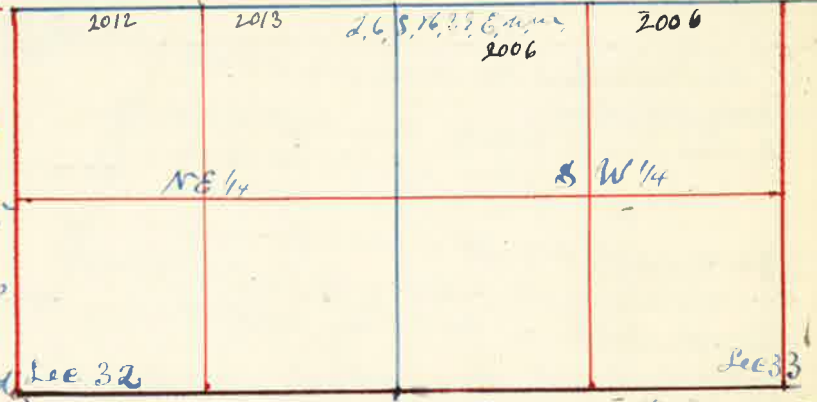


J.W. Kimbrell County Surveyor

Surveyed for J. G. W. Hutchins June 11 1888

By J.W. Kimbrell Deputy Co Surveyor Plat No. 41

The N.E. corner Sec 33 thence West 60 chains set stake for temporary 1/4 corner 8024 chains the corner to Sec 28-29-32 833 from which I run East on true line 2006 chains set witness corner on South bank of North Bend River 25 links South of true corner. The corner to Sec 28-29-32 833 thence West 20 chains set stake 4025 chains 1/4 sec corner between Sec 29 & 32, from which I run East 2012 chains set post for 1/4 corner J.W. Kimbrell Deputy Co Surveyor

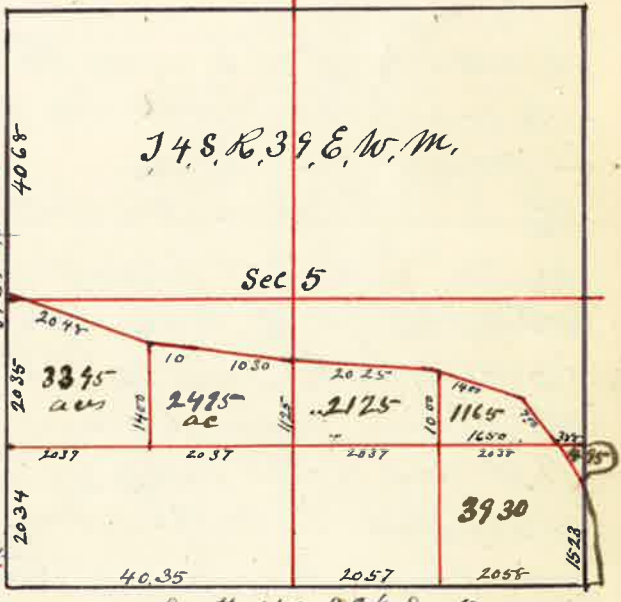


Surveyed for S. F. Newhard Aug the 7 1888

By J.W. Kimbrell County Surveyor Plat No 43

I started at the 1/4 sec corner on the South side Sec. 5. thence West var 20° E at 4020 chains found N.E. sec corner and set stake for temporary corner. thence West 8008 chains bearing 72° 12' North of corner to 1-12-1887 making an excess of 45 lbs over U.S. field note. I therefore run East 7999 chains and set stake for sec corner. The corner to Sec 7-8-17 818 thence North 80 chains set stake for temporary Sec. corner. thence North 8274 chains intersect true line 90 lbs West of corner to Sec 5-6-31 832 making an excess of 274 lbs over U.S. field notes. I therefore run South 4078 chains planted a Stake in mound of Stone at 6014 1/2 chains planted Stone 7x10x26 inch for 1/4 corner 8137 chains planted Stone 4x6x30 inches 15 in in the ground for corner to 5-6-7-8

The 1/4 sec corner on South side Sec 5 thence East 4015 chains sec corner. from which I run West 2057 chains set Stone 4x10x24 for 1/4 corner on South side S & E 1/4 Sec 5. The 1/4 corner on West side S & W 1/4 Sec 5 thence East 8149 chains East boundary Sec 5 from which I run West var 20° E 2038 chains set post for 1/4 corner 4075 set Stone for 1/4 corner 6112 chains set Stone for 1/4 corner in center S & W 1/4 Sec 5. thence North 1400 chains set post for meander corner. The 1/4 sec corner on West side Sec 5 thence S 74° E 2048 chains set post for meander corner No. 7 thence S 75° E 10 chains meander corner No. 2 thence South 88° E 1630 chains meander corner No. 3 thence S 85° E 2025 chains meander corner No. 4 thence S 28° E 1700 chains meander corner No. 5 thence S 24° E 700 chains meander corner No. 6. a post in mound of Stone



J.W. Kimbrell County Surveyor