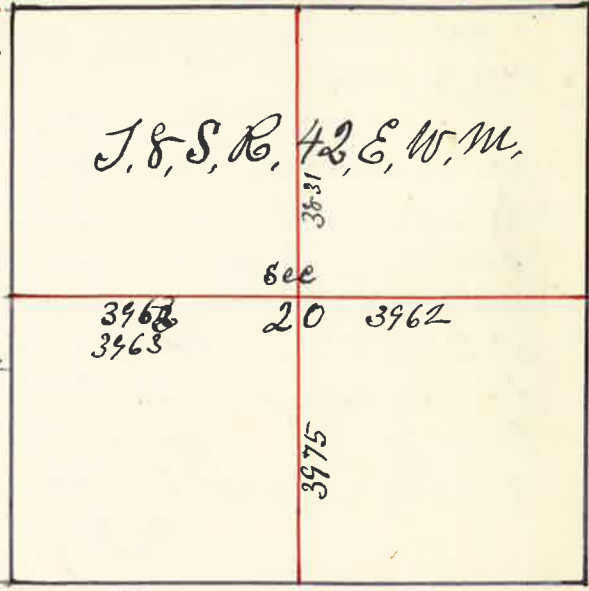


Surveyed for Jack Sturgil Sept. 2nd 1888

By J.W. Kimbrell County Surveyor Union Co Plat No. 46

I Commenced at the 1/4 Sec corner between Sec 17 & 20 thence South at 40 chains set temporary center of Sec 20 and at 7806 chains intersect South boundary of Sec 20 68 links East of 1/4 Sec corner between Sec 20 & 29.

I then started at the 1/4 Sec corner on East side Sec 20 thence west at 3950 chains intersect N & S line 100 lbs north of first temporary stake for center at 7925 chains 1/4 Sec corner on west of Sec 20 from which I run East 3962 chains set stake for center Sec 20. J.W. Kimbrell Co. Surveyor

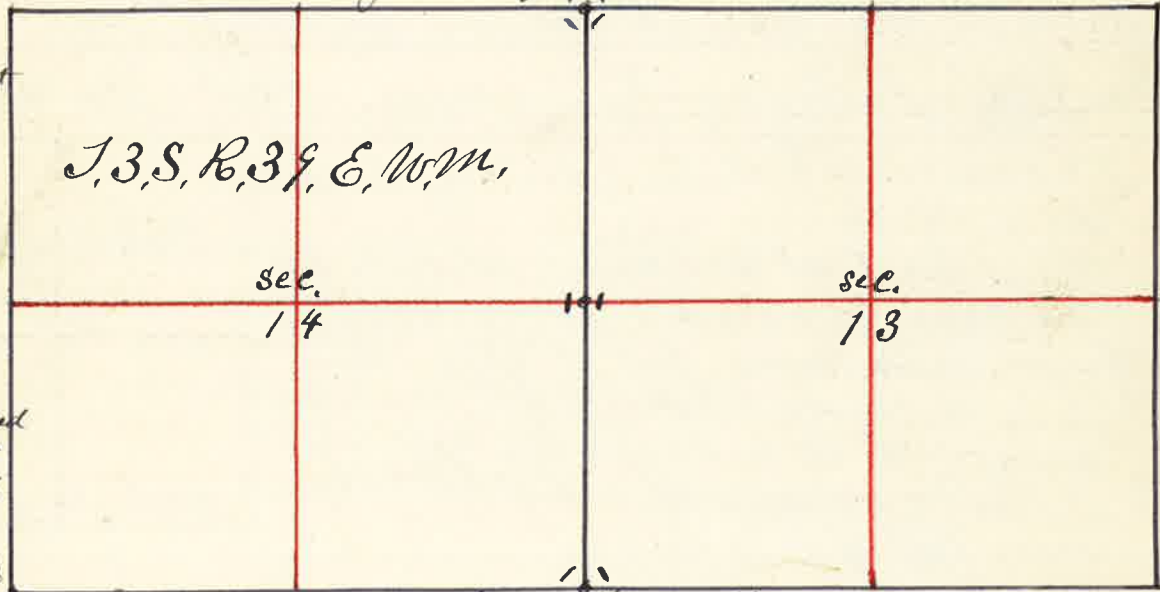


Surveyed for John Phy & L. B. Holmes Sept. the 5th 1888

By J.W. Kimbrell County Surveyor Plat No. 47

For the Re-establishment of the N.E. and S.E. corners of Sec 14 and the 1/4 Sec corner between Sec. 13 & 14

I commenced at the N.W. corner of Sec 14 which is



a stone thence East at 3995 chains found the 1/4 Sec corner between Sec 11 and 14 thence East 3973 chains set temporary Sec corner to Sec 11=12=13 & 14 thence East 775 chains River offset north 170 lbs East 123 links across River 25 chains offset north 300 links 3982 chains set back South on true line but found no 1/4 Sec corner thence East 35 links offset South 1400 chains thence East 3982 chains thence North 1400 chains to Sec corner a stake from which a willow 18 inches dia.

See Plat on Page 48 Plat 47 Phy & Holmes

Bears N 20° W 23 links distant, a Willow 2 in Bears N 80° E 5 lks distant a Willow 12 in Bears S 85° W 20 links distant Sept 6th 1888
I started at Township corner on Guide Meridian to Township S. 38 & 4 S. Ranges 39 & 40 E. thence North on G.M. bar 20° 15' E at 80 chains found no corner. thence North at 80 chains found no corner, and set temporary stake for corner thence North 40 chains set stake for temporary 1/4 Sec corner and at 8072 chains the corner to Sec 18=19=13 & 24 making an excess of 72 links over U.S. field notes on this line in 3 miles I therefore run South 4012 chains set Stone Granite block mark 14 6 x 17 x 25 at 8024 set Stone 7 x 12 x 25 for corner to Sec 19=30=24 & 25
I then started at 1/4 Sec corner between Sec 11 & 13 thence South 20 chains offset 500 links west 4020 chains set temporary stake 464 links west of first stake on E & W line at this corner thence South on offset 40 chains set temporary stake 500 links East of Township line at 8000 chains set back East 500 chains on true line and set stake for temporary Sec corner to Sec 13=14=23 & 24 thence South bar 20° E at 40 chains found no 1/4 Sec corner 80 chains found no corner, South 80 chains found no corner but at 8120 chains I intersect Township line at corner to Sec 1=2=36 & 36 making an excess of 120 links in 4 1/2 miles over U.S. Field notes I therefore run North allowing 2 lks excess to the mile and set stake for temporary corner to Sec 13=14=23 & 24 thence North 4013 chains set Stone 6 x 12 x 17 mark 14 S. between Sec 13 & 14 8026 chains set Stone 5 x 10 x 25 inches for corner to Sec 11=12=13 & 14
I then started at the corner to Sec 18=19=13 & 24 thence West at 7964 chains U.S. Survey set stake for temporary corner to Sec 13=14=23 & 24 thence West 7960 found no corner thence West 29 chains Catherine Creek 100 lbs wide 4127 chains wire fence 8144 chains wire fence running South thence West 8069 chains wire fence N & S thence West 8060 chains found no corner thence West 7943 chains intersect Township line making an excess of 93 lbs in 6 miles over U.S. Field notes. I therefore run East allowing 15 1/2 links for each mile over the original U.S. Survey and planted a Stone or Granite Boulder 9 x 12 x 20 inches marked for corner to Sec 13=14=23 & 24

J.W. Kimbrell County Surveyor