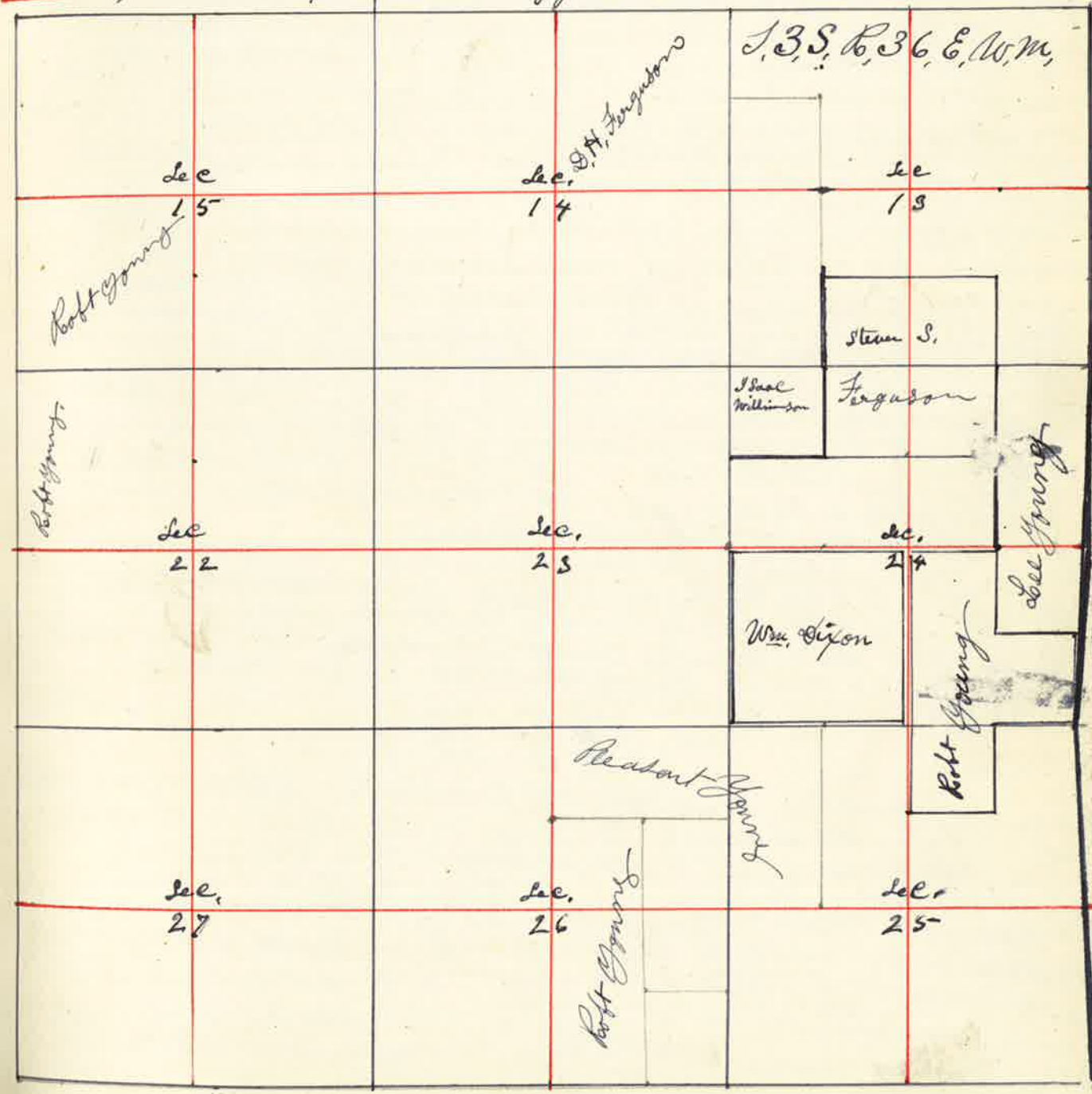


from which I run South  $12\frac{1}{2}^{\circ}$  4102 Chains planted Red volcanic rock  $7 \times 7 \times 20$  inches for  $\frac{1}{4}$  Sec corner between Sec 15 & 16 at 6153 Chains Set Post marked for  $\frac{1}{8}$  corner from which a Pine 12 inches bears  $N 55^{\circ} W$  1201 links distant a Fir 12 inches bears  $S 1^{\circ} E$  95 lks dist. I then started at  $\frac{1}{4}$  Sec corner between Sec 15 & 16 thence East through center Sec 15 40 chains set post for temporary center 80 chains found no  $\frac{1}{4}$  Sec corner and proceeded to re establish the initial point of the same I therefore started at the South East corner Sec 15 from which a pine 24 inches diameter bears  $S 7^{\circ} 30' E$  320 links distant thence I run Belt bar  $20^{\circ} E$  40 chains set stake for  $\frac{1}{4}$  Sec corner 80 chains found no corner 81 chains found bound line 75 lks on corner thence North 4306 chains the  $\frac{1}{4}$  Sec corner between Sec 10 & 11 making the excess 103 links to each  $\frac{1}{2}$  mile over the U.S. & Texas line making the random line run through the center Sec 15 8134 chains long and my departure 34 links South or  $11''$  I then started at the  $\frac{1}{4}$  Sec corner on the North side Sec 15 from which a pine 24 inches bears  $S 63^{\circ} E$  205 links dist - a pine 14 inch dia bears North 155 links dist from thence I run South bar  $20^{\circ} E$  4083 chains the center 8185 chains South boundary Sec 15 93 links West of  $\frac{1}{4}$  Sec corner on South side Sec 15 from which a pine 18 in dia bears  $N 10^{\circ} W$  97 links dist - a pine 24 inch bears  $S 7^{\circ} W$  99 links dist from which I run North bar  $20^{\circ} 45' E$  and at 4092 chains set stake marked C.S. for center Sec 15 I then started at the S.W. corner Sec 15 thence East 4050 chains the  $\frac{1}{4}$  Sec corner on South side Sec 15 from which I run West 2025 chains set post for  $\frac{1}{8}$  corner from which a pine 12 inch bears  $S 51^{\circ} W$  162 links a sawrack 8 inch bears  $N 47^{\circ} E$  86 links distant the  $\frac{1}{4}$  Sec corner on West side Sec 22 from which a pine 14 inch bears  $N 83^{\circ} E$  35 lks distant a Fir 12 in bears  $S 13^{\circ} 30' W$  76 links distant thence I run East through the center Sec 22 8083 chains the East boundary Sec 22 77 links South of  $\frac{1}{4}$  Sec corner from which a pine 22 inch bears  $N 74^{\circ} E$  141 links dist - a pine 30 in bears  $N 65^{\circ} 30' W$  370 links distant from which I run West on true line 6062 chains set post for  $\frac{1}{8}$  corner from which a pine 14 inches bears  $N 13^{\circ} E$  68 links dist - a sawrack 8 inch bears  $S 7^{\circ} 30' E$  72 lks dist. The corner to Sec. 15 = 16 = 21822 thence West 2026 chains set post for  $\frac{1}{8}$  corner from which a pine 7 inch bears  $N 85^{\circ} 30' W$  109 links a pine 7 inch bears  $S 69^{\circ} 45' E$  125 links distant 4052 chains the  $\frac{1}{4}$  Sec corner on South side Sec 16 from which a pine 24 inch bears  $S 78^{\circ} E$  25 lks a pine 20 inch bears  $N 31^{\circ} E$  53 lks dist - bar  $25^{\circ} E$  thence North bar  $25^{\circ} E$  8229 chains  $\frac{1}{4}$  Sec corner on North side Sec 16 from which

a pine 24 inch bears  $N 5^{\circ} W$  55 links distant a pine 20 " " "  $S 39^{\circ} E$  66 " " from which I run South on true line bar  $20^{\circ} E$  and at 6171 chains set post for  $\frac{1}{8}$  corner from which a pine 6 inches bears  $S 23^{\circ} 30' W$  26 links distant W. Kimbell County Surveyor.

Surveyed for Robert Young, D. Con. and Wm. Simon Isaac Williamson S. H. Ferguson Mrs. Endrop & H. Jensen By W. Kimbell Co. Surveyors Plat No. 57 Dec the 7<sup>th</sup> 1888



I commenced at the 1/4 Sec corner on the South Side of Sec 26  
 Thence I run North var. 19° 45' E 8135 chains the 1/4 Sec corner on  
 the North Side Sec 26 from which a Pine 14 inch dia. Bears N 50° W 37 links  
 a Pine 20 inch Bears S 52° W 50 links distant from which I run South  
 2022 chains set post for 1/16 corner from which a Pine 20 inch Bears N 35° 45' E  
 81 links dist. a Pine 20 inches Bears S 85° 35' E 98 links dist.  
 4044 chains set post for center 26 from which a Pine 18 inches  
 Bears N 42° 45' E 49 links distant a Pine 18 inches Bears S 40° W 81 links  
 6080 chains set post for 1/4 corner from which a Pine 24 inch  
 dia. Bears N 29° E 13 links dist. a Pine 10 inches Bears S 55° W 77 links  
 I started at 1/4 Sec corner on West Side of Sec 26 from which  
 a Sawrack 14 inches Bears S 9° E 73 lbs a Sawrack 18 inches  
 Bears S 1° W 46 lbs distant. Thence East through the center  
 Sec 26 4058 chains the center Sec 26 8123 chains the 1/4 Sec  
 corner on East Side Sec 26 from which a Pine 23 inch  
 Bears S 65° W 90 links a Pine 7 inches Bears N 88° E 31 lbs.  
 from which I run West 2033 chains and set post for  
 1/16 corner from which a Pine 20 inch Bears S 78° 30' W 148  
 links dist. a Pine 15 inch Bears N 57° E 152 links distant  
 the 1/4 Sec corner on East Side Sec 26 Thence North 4080 chains the  
 corner to Sec 23 = 24 = 25 & 26 from which I run South 2040 chains set  
 post for 1/8 corner in mound of stone from which a Pine 24 inch  
 Bears S 55° 30' E 4 links dist. a Pine 14 inch Bears N 1° W 23 links distant.  
 Thence West 4061 chains 1/16 corner in center of Sec 26 from  
 which I run East 2031 chains set post for 1/8 corner in center of Sec 26  
 from which a Pine 10 inch Bears S 46° E 230 links distant a Pine  
 14 inches Bears N 42° W 150 links distant  
 the 1/4 Sec corner between Sec 25 & 26 Thence East through the center  
 Sec 25 7991 the 1/4 Sec corner on East Side Sec 25 from which a Pine  
 24 inch Bears N 40° W 29 links dist. a Pine 20 inch Bears N 52° E 53 links  
 Thence North 4072 chains the corner to Sec 24 = 25 = 26 from which  
 a Pine 34 inches dia. Bears S 74° W 68 links distant  
 a " 32 " " " " S 12° E 106 " "  
 a " 33 " " " " N 41° W 29 " "  
 a " 22 " " " " N 51° E 80 " "  
 Thence West var 21° E 3926 chains the 1/4 Sec corner between Sec 24 & 25  
 from which a Pine 28 inches dia. Bears S 83° W 276 links distant  
 a Pine 34 inches Bears N 73° W 239 links distant from which I run  
 East 1963 chains set post for 1/8 corner Thence South 2035 chains  
 set post for mound of stone for 1/16 corner in center N. E. 1/4 Sec 25  
 the 1/4 Sec corner on North Side Sec 26 Thence South 2033 chains set  
 post for mound of stone for 1/8 corner in center of N. E. 1/4 Sec 25 4067  
 chains the center Sec 25 at 8157 chains the 1/4 Sec corner on South  
 Side Sec 25 from which a Pine 15 inch Bears N 55° W 67 links dist.  
 a Pine 22 inch Bears S 36° E 26 links distant Thence North  
 4090 chains the center Sec 25 Thence West 2004 chains set post in  
 mound of stone for 1/8 corner in center W. E. 1/4 Sec 25  
 The North boundary N. E. 1/4 Sec 26  
 4054 chains

The 1/4 Sec corner on South Side Sec 24 Thence North through center Sec 24  
 8270 chains to 1/4 Sec corner on North Side Sec 24 from which a Pine  
 12 inches Bears N 23° W 23 links a Pine 24 inches Bears S 19° E 98 links  
 Thence East 4062 chains the corner to Sec 18 = 19 = 13 & 24  
 from which I run West 2031 chains set post in mound of stone  
 from which I commenced at 1/4 Sec corner on West Side  
 Sec 24 from which a Pine 26 inches dia Bears S 47° E 222 links dist  
 Thence East through center Sec 24 var 20° E 20 chains set post for  
 temporary 1/8 corner 4031 chains intersect N. E. S. line 84 links North  
 of first stake to center 600 chains set stake for 1/8 corner 8108 chains  
 intersect East boundary Sec 24. 464 links South of  
 1/4 Sec corner from which a Pine 14 inch Bears N 71° 30' E 88 links  
 a Pine 18 inch Bears West 36 links distant from which  
 I run West on true line S 88° 20' W on true line var 20° E  
 2039 chains set post from which a Pine 34 inch Bears N 43° E  
 153 links dist. Thence West 2039 chains set post for center Sec 24  
 from which a Pine 6 inch Bears S 37° W 23 links a Pine  
 4 inches Bears N 67° 30' W 31 links dist. a Pine 10 inch Bears  
 N 75° E 80 links dist. Thence West 2016 chains set post for  
 center W. E. Sec 24 from which a Pine 14 inch Bears  
 N 59° E 79 links dist. a Pine 18 inch Bears S 79° W 126 links dist.  
 From the center Sec 24 I run South 2153 chains set post  
 for center of 3/4 Sec 24 The 1/4 Sec corner on  
 East Side Sec 24 Thence South var 20° E 4388 chains  
 the South boundary Sec 19 & 24 300 links East of corner  
 of Sec 19 = 20 = 24 & 25 from which I run N. 4°  
 East 2196 chains set post for 1/8 corner from which  
 a Pine 20 inches Bears N 56° W 49 links a Pine 30 inches  
 Bears S 48° W 51 links 4388 chains the 1/4 Sec corner between  
 Sec 24 & 19 Thence North 3911 chains the corner to Sec  
 18 = 19 = 24 & 13 from which I run South var 20° E  
 1955 chains set post for 1/8 corner from which a Pine 6 inch  
 Bears S 5° E 212 links dist. a Pine 14 inch Bears S 87° W  
 168 links distant. the 1/8 corner on East Side S. E. 1/4 Sec  
 24 Thence West 20 chains set post for center S. E. 1/4 Sec 24  
 from which a Pine 14 inches Bears N 62° W 136 links dist.  
 a Pine 12 inch Bears S 54° 30' E 81 links distant Thence  
 West 40 chas 1/16 corner in center S. E. 1/4 Sec 24

J. W. Kimbrell County Surveyor