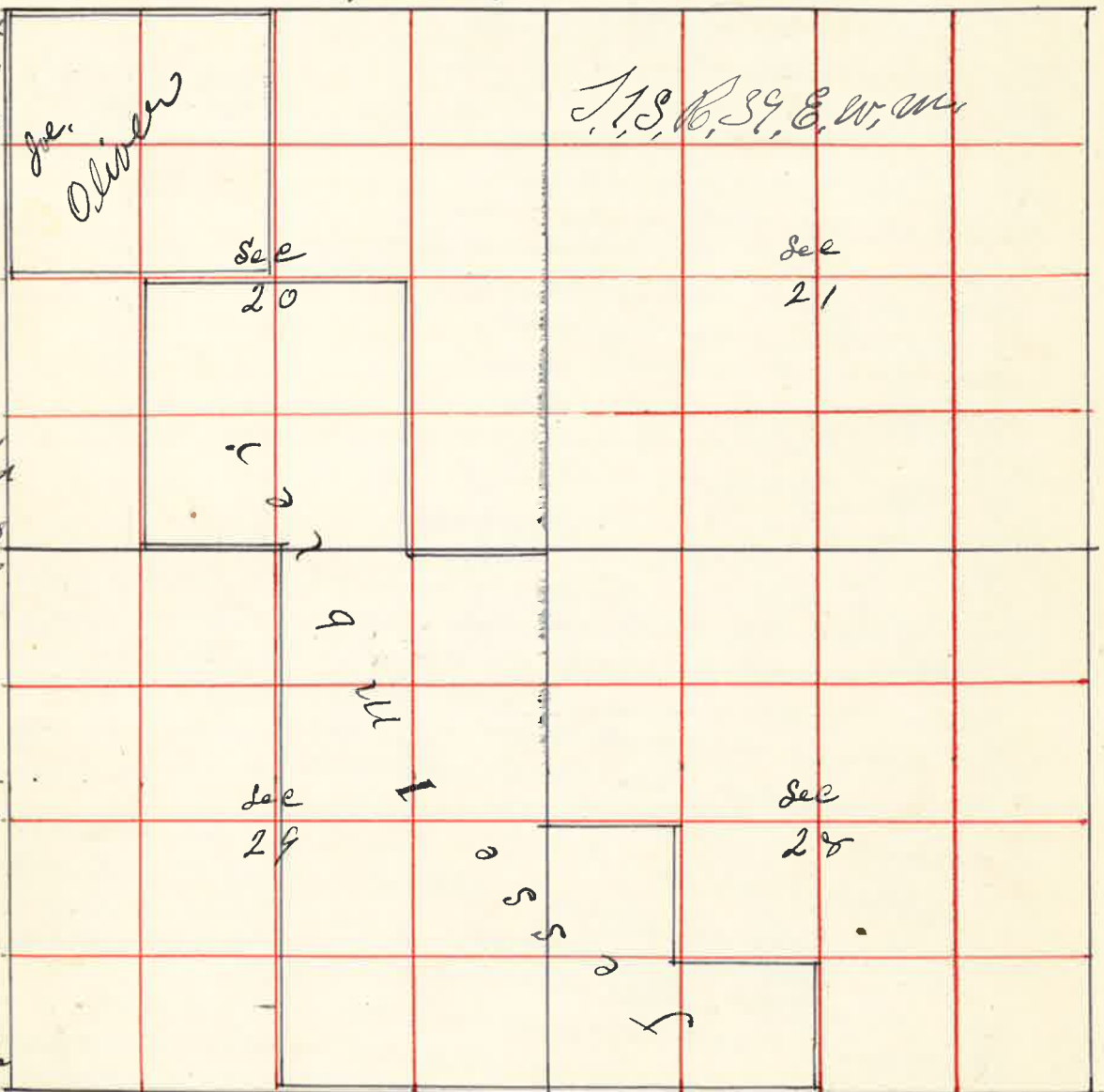


70 Surveyed for Jesse Imblos Dec 17 1888
 By J.W. Kimbell County Surveyor Plat No 62

I commenced
 at the corner
 to Sec 26 =
 = 27 = 34 & 35
 thence west
 var 190° 6
 7974
 chains
 the corner
 to Sec
 27-28=33
 9834
 thence west
 3904 chain
 Grand Round
 River 184
 links across
 4000 chains
 set stake
 for survey
 1/4 sec corner
 8070 set
 stake for
 temporary
 corner to
 Sec 32=33
 28829
 thence
 west
 4005
 chains
 set stake
 for temporary 1/4 sec corner



8155 chains the corner to Sec
 29=30=31 & 32 from which I run East var 10° E 4042
 chains set stake 6x8x16 ft 1/4 sec corner between Sec 28 & 32 8084 chains set
 stone 10x12x18 ft corner to Sec 28=29=32 & 33 thence East
 4037 chains set stone 6x9x18 ft 1/4 sec corner between Sec 33 & 28
 the corner to Sec 4=5=32 & 33 thence
 North 80 chains set stake. thence North 180 chains the
 Grand Round River 163 links across 40 chains set stake
 for temporary 1/4 sec corner 5962 chains Grand Round
 River 185 links across 6870 chains Grand Round
 River 185 links across 8036 chains the corner to
 Sec 20=21=28 & 29 thence South 4009 chains set stake for
 1/4 sec corner between Sec 28 & 29 thence East 2008

71 See Page 70 Plat 62 Jesse Imblos
 thence South 2000 chains thence East 2016 chains thence
 South 2000 The corner to Sec 20=21=28 & 29
 thence North var 20° E 692 chains Grand Round River
 321 links a cross 40 chains set stake for survey
 1/4 sec corner 80 chains found no corner thence North
 40 chains found no corner 80 chains found no corner
 40 chains found no corner 80 chains found no corner
 thence North 40 chains found no corner
 8170 chains the corner to Sec 4=5=859 from which
 I run South allowing an excess of 8056
 chains excess in each mile one U.S. Field Note
 and at the corner to Sec 16=17=20 & 21
 set stone for corner thence South 4928 chains
 set post in mound of earth for 1/4 sec corner
 between Sec 20 & 21 the corner to
 Sec 5=6=7 & 8 thence South 1898 chains
 Willow Creek 20 ft wide 4070 chains rail
 fence 8115 rail fence thence South 40 chains
 rail fence 8025 set stake thence South 8152 chains
 the corner to Sec 19=20=30 & 29 from which
 I run North 4025 chains set stake for 1/4 sec
 corner 8051 chain set stake for corner to Sec 18=19
 20 & 19 the corner to Sec 19=20=29 & 30
 thence East 20 chains set stake for 1/4 corner
 40 chains set stake for 1/4 sec corner 60 chains
 set stake for 1/4 corner 7100 chains Grand Round
 River 8038 chains the corner to Sec 20=21=28 & 29
 from which I run West 2009 chains set stake
 for 1/4 corner 4018 chains set stake for 1/4 sec corner
 6027 chains set stake for 1/4 corner 8038
 chains Sec corner the N.W. corner Sec 19 thence
 East 7920 chains set temporary stake thence East 7970
 set temporary stake thence East 7914 chains set stake
 thence East 1100 chains Grand Round River 250 links
 across 4225 chains the 1/4 sec corner between Sec 22 & 15
 making an excess of 225 links in the 3 1/2 miles of
 U.S. Field Notes. I therefore run West allowing
 32 links excess to each 1/2 mile to the corner
 to Sec 16=17=21 & 22 thence West 4017 chains set
 stake for 1/4 sec corner 8034 the corner to Sec 17=18=19 & 20
 Over