

Surveyed for C.M. Kellogg & Co. July the 11<sup>th</sup> 1889

By W. Kimbrell County Surveyor for Univ. & Plat No. 86

I commenced at the 1/4 Sec Corner bet Sec 20 & 29  
Thence N 86° 21' E

1985 the 1/8 corner  
3970 the corner to Sec 20=21=28 & 29  
from which  
a Cottonwood 16 in brs N 65° W 12 lks  
" 24 " " N 65° E 8 "  
" 10 " " S 50° E 14 "  
an alder 6 " " S 30° W 25 "

Thence South var 20° E

4000 Set Temporary 1/4 Sec Post -  
the 1/4 Sec corner being  
lost and obliterated

8000 found no Sec corner  
but at 90

9000 I found the corner  
to Sec 28=29=32 & 33

from which  
a Pine 10 inch brs N 30° E 88 lks  
" 36 " " S 77° W 79 "  
" 20 " " S 55° W 89 "  
" 10 " " N 45° W 145 "

There being an Excess of 1000 Chains  
Over the Field Notes of U.S. Survey or a mistake  
Thompson & Chaplin reports this line bet Sec 28 & 29 to be 80 chins

W.B. Barr in 1881 in surveying the remainder of this Township  
Reports the same line to be 8492 chains

and by carefully chaining I find it to be just 9000 chains as follows

North bet Sec 28 & 29 var 20° E

100 Creek 25 lks wide course East

4500 Set Post for 1/4 Sec corner bet Sec 28 & 29

9000 the corner to Sec 19=20=28 & 29

The 1/4 Sec corner bet Sec 28 & 29

Thence West through Sec 29 var 22° E.

2000 Set Temporary 1/6 corner in center of Sec 29

7950 I intersect west boundary Sec 29 146 lks South of 1/4 Sec corner

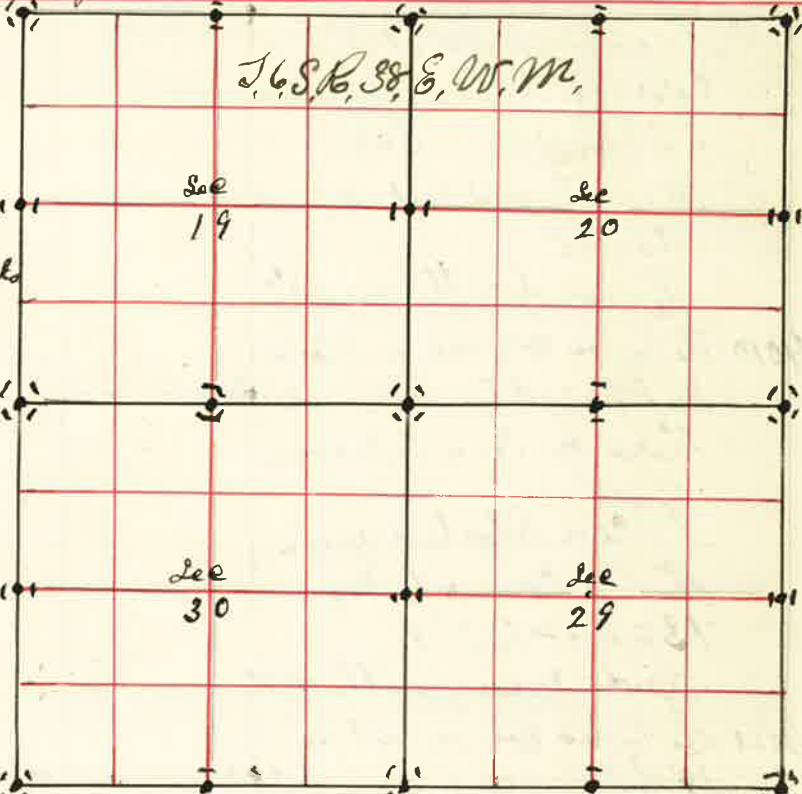
bet Sec 29 & 30 from which

a Pine 12 in brs S 4 1/2° W 83 lks  
" 20 " " S 33 1/2° E 107 "

Thence West var 19° E

2000 Set Temporary Post for 1/6 corner from which

a Pine 8 in brs N 85° E 17 lks marked 1/6 B.T.  
" 8 " " S 78° W 14 "



Surveyed for C.M. Kellogg & Co. July 11 1889

The 1/4 Sec corner bet Sec 29 & 30

Thence East var 19° E

1988 Set Post for center NW 1/4 Sec 29

Thence North var 19° 45' E

2087 Set Post for center NW 1/4 Sec 29

4175 the 1/8 corner on North boundary N. W. 1/4 Sec 29

the corner to Sec 19=20=29 & 30 from which

a Pine 12 in brs N 58° E 72 lks

" 10 " " N 57° W 20 "

a Pine 20 " " S 10° E 103 "

" 21 " " S 25° W 109 "

Thence West var 20° E.

2000 Set Temporary Post for 1/8 corner

4052 Intersect 152 lks North of 1/4 Sec corner from which

a Pine 24 inch brs N 45° E 25 lks

" 9 " " S 53° W 25 "

Thence West

2000 Set Temporary Post for 1/8 corner

4250 Intersect West boundary 466 lks North of corner

to Sec 30=19=24 & 25 from which I run East

Thence N 85° E on true line

2125 Set Post for 1/8 corner

4250 the 1/4 Sec corner

Thence East

2026 Set Post for 1/8 corner on North boundary N. W. 1/4 Sec 29

the 1/4 Sec corner on W boundary Sec 30 Thence East

2036 Set Post for center NW 1/2 Sec 30

The NW corner Sec 30 from which

a Spruce 6 in brs N 40° W 30 lks

a Spruce 6 " " S 45° W 20 "

" Pine 14 " " S E 40 "

" " 30 " " N E 20 "

Thence North var 21° E

2000 Set Temporary 1/8 corner

4141 Intersect 112 lks East of 1/4 Sec corner from which I run North

2071 Set Post for 1/8 corner

4141 the corner to Sec 19=20=29 & 30 W. Kimbrell County Surveyor