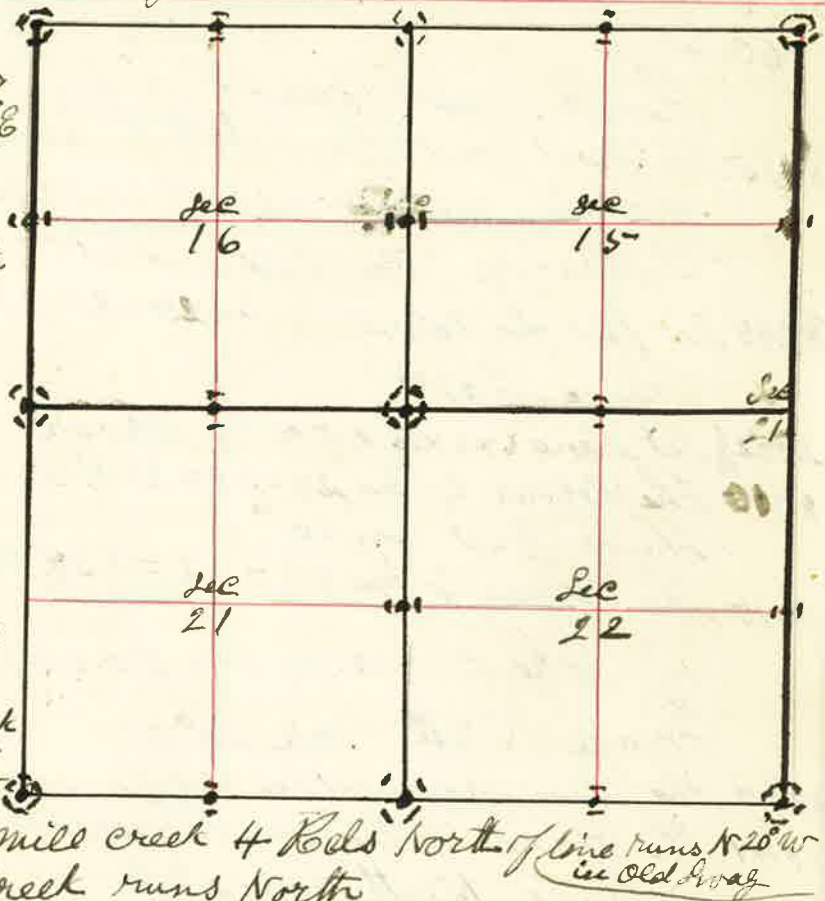


Surveyed for H H French Aug 30 1889

By J. W. Kimbrell County Surveyor Plat No 90

- I commenced at the Corner to Sec 20=21=16 & 17
- Thence East - var 21° 15' E
- 1000 Swag runs SW old bed
- 1550 " " SW " "
- 3540 one Branch of Mill Creek Main Swag runs S 10° W.
- 3700 ditch 1 Rod diverges NW or forks of of ditch
- 3800 old small ditch SW
- 3900 North or right bank of Mill Creek S. 20° W
- 3960 Set Temporary stakes corner
- 4056 crosswalk N. H. S.
- 4188 South or left bank of Mill Creek S 89° W
- 4300 Frenches Dam in mill creek for water ditch runs N 25° W South End of Dam 14 rods North
- 4900 ditch diverges from mill creek 4 Rods North of line runs N 20° W
- 5247 left bank of mill creek runs North
- 5372 Right bank of mill creek main bed of creek
- 5398 creek runs SW left bank
- 5418 Right bank
- 5483 South bank of creek
- 5582 ditch south bank of creek
- 5605 creek runs west-
- 5670 creek runs SW
- 5750 creek
- 5750 creek runs N 45° W 40 lbs across School ditch diverges from creek and runs N, W.
- 5987 offset South 50 lbs
- 6054 South west - corner of Barn bears North 22 lbs
- 6225 North bank of Old bed of creek
- 6652 Small ditch runs N, W.
- 6689 Shed building
- 7679 Small ditch runs N, W.
- 7920 the corner set stakes for temporary corner to Sec 15=16=21 & 22



Surveyed for H H French Aug 30 1889

- Thence East var 21° E
- 965 Spring Branch runs NW
- 5950 Spring Branch " NW
- 6785 " " " NW
- 7980 U.S. Field Notes but no Sec come
- 8165 The corner to Sec 14=15=22 of 28 making an Excess of 165 lbs over U.S. Field Notes in the Two Miles Chained
- But from all indications there was a mistake made in the Original U.S. Survey of the E 1/2 mile between Sec 21 & 16 as there is being trees for the 1/4 Sec corner bet Sec 16 & 21 as follows a willow 6 inches dia. bears S 35° W 136 lbs dist. an alder 5 " " " N 86° E 378 " " which I did not know of at the time as I did not have the Field notes of the Government Survey, which I procured later.

J. W. Kimbrell County Surveyor  
for Union Co. Oregon