

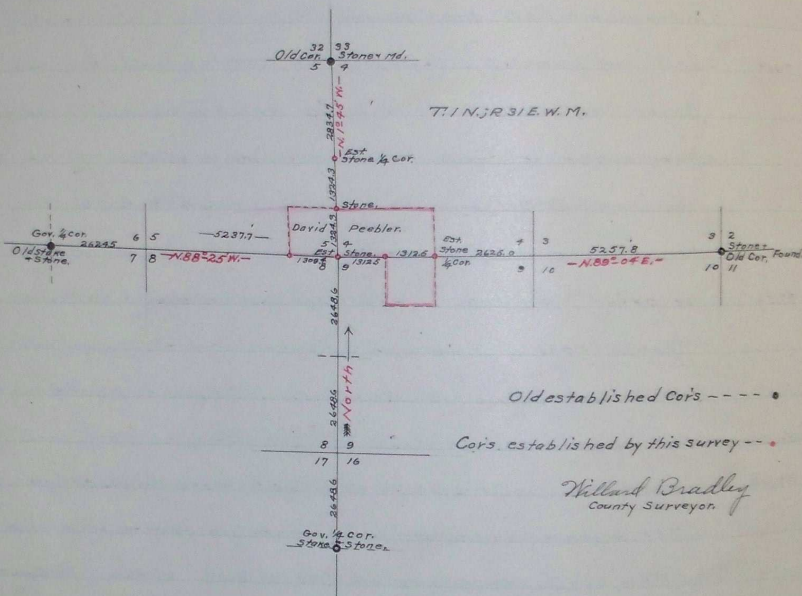
Survey for David Peebler.

April 14-15-16, 1916

Chains Links

Part of Secs. 4-5-8-9. T.1N., R.31E. W.M.

Marcus May -- head chain.
 Myrten Moore -- rear chain.
 David Peebler -- flagman.



Oldestablished Cor's ---- •

Cor's. established by this survey -- •

Willard Bradley
 County Surveyor.