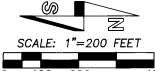


2000-47

BOUNDS/MEDELEZ PARTITION
LOCATED IN THE SOUTHEAST QUARTER OF SECTION 25,
TOWNSHIP 4 NORTH, RANGE 27 EAST, W.M., UMATILLA COUNTY, OREGON.
OWNER: MEDELEZ TRUCKING, LLC, 30522 OLDFIELD,
HERMISTON, OR 97838
OCTOBER, 2000.

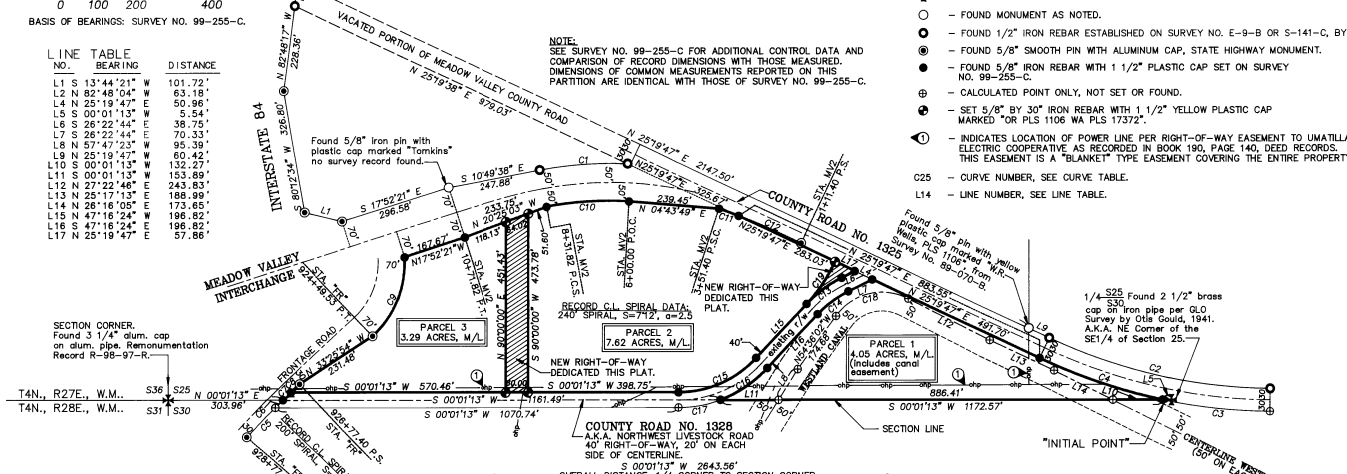
PARTITION PLAT NO. 2000-47



SCALE: 1"=200 FEET
BASIS OF BEARINGS: SURVEY NO. 99-255-C.

LINE TABLE with columns: NO., BEARING, DISTANCE. Lists 17 line segments with bearings and distances.

SECTION CORNER:
Found 3 1/4" alum. cap
on alum. pipe. Remonumentation
Record R-98-97-R.



CURVE TABLE with columns: NO., DELTA, RADIUS, LENGTH, LONG CHORD. Lists 19 curve segments with their respective parameters.

SURVEYOR'S CERTIFICATE AND NARRATIVE
I CERTIFY THAT I HAVE CORRECTLY SHOWN PARCELS 1, 2 AND 3 OF THIS PARTITION PLAT IN ACCORDANCE WITH ORS CHAPTER 92, AS REVISED, AND THE UMATILLA COUNTY DEVELOPMENT ORDINANCE...

THIS PARTITION SURVEY WAS MADE BY A 2 PERSON CREW USING LEICA SYSTEM 399 GEOETIC GLOBAL POSITIONING RECEIVERS OPERATED IN REAL TIME KINEMATIC MODE.

REAL PROPERTY DESCRIPTION
A tract of land located in the Southeast Quarter of Section 25, Township 4 North, Range 27 East, W.M., Umatilla County, Oregon, described as follows:

Commencing at the Northeast Corner of the Southeast Quarter of said Section 25; thence South 00°01'13" West along the East line of said Southeast Quarter a distance of 5.54 feet to the intersection of said East line with the Easterly line of County Road Number 1325, the "INITIAL POINT" for this description; thence South 00°01'13" West, continuing along said East line a distance of 1172.57 feet to the intersection of said East line with the North line of County Road Number 1328, (also known as Northwest Livestock Road); thence South 00°01'13" West, continuing along said East line a distance of 1161.49 feet to the Northerly right-of-way line of State of Oregon, Highway Commission, Frontage Road; thence along the North line of said Frontage Road, on the arc of a 30 foot inside offset spiral curve to the right a distance of 28.94 feet (long chord bears North 43°18'24" East a distance of 28.94 feet), record spiral data: 200 foot spiral, a=2.5, to a point on the West line of County Road Number 1328; thence continuing along the North line of said Frontage Road, on the arc of a 30 foot inside offset spiral curve to the right a distance of 150.40 feet (long chord bears North 43°27'28" West a distance of 150.40 feet) to Highway Engineer's Centerline Station "FR" 926+77.40 P.S., on said North line; thence North 33°26'54" West, continuing along the North line of said Frontage Road a distance of 231.48 feet to Highway Engineer's Centerline Station "FR" 924+49.53, P.S.; thence continuing along the North line of said Frontage Road, on the arc of a 270.00 foot radius curve to the left a distance of 232.90 feet (long chord bears North 68°05'37" West a distance of 225.14 feet) to a point on the East right-of-way line of the State of Oregon, Highway Commission, "Meadow Valley Continued at right..."

NOTE: SEE SURVEY NO. 99-255-C FOR ADDITIONAL CONTROL DATA AND COMPARISON OF RECORD DIMENSIONS WITH THOSE MEASURED. DIMENSIONS OF COMMON MEASUREMENTS REPORTED ON THIS PARTITION ARE IDENTICAL WITH THOSE OF SURVEY NO. 99-255-C.

- LEGEND
\* - FOUND PUBLIC LAND SURVEY CORNER AS NOTED.
O - FOUND MONUMENT AS NOTED.
● - FOUND 1/2" IRON REBAR ESTABLISHED ON SURVEY NO. E-9-B OR S-141-C, BY STAEBLER.
⊙ - FOUND 1/2" SMOOTH PIN WITH ALUMINUM CAP, STATE HIGHWAY MONUMENT.
● - FOUND 5/8" IRON REBAR WITH 1 1/2" PLASTIC CAP SET ON SURVEY NO. 99-255-C.
⊖ - CALCULATED POINT ONLY, NOT SET OR FOUND.
⊕ - SET 5/8" BY 30" IRON REBAR WITH 1 1/2" YELLOW PLASTIC CAP MARKED FOR PLS 1106 WA PLS 1332-2.
⊙ - INDICATES LOCATION OF POWER LINE PER RIGHT-OF-WAY EASEMENT TO UMATILLA ELECTRIC COOPERATIVE AS RECORDED IN BOOK 190, PAGE 140, DEED RECORDS. THIS EASEMENT IS A "BLANKET" TYPE EASEMENT COVERING THE ENTIRE PROPERTY.
C25 - CURVE NUMBER, SEE CURVE TABLE.
L14 - LINE NUMBER, SEE LINE TABLE.

OVERALL DISTANCE, 1/4 CORNER TO SECTION CORNER
Continued from left...

Interchange; thence North 17°52'21" West along said East line a distance of 167.67 feet to Highway Engineer's Centerline Station "MV2" 10+71.82, P.T.; thence North 20°25'03" West, continuing along said East line a distance of 233.75 feet to Highway Engineer's Centerline Station "MV2" 8+31.82, P.C.S.; thence continuing along said East line, on the arc of a 904.93 foot radius curve to the right a distance of 219.68 feet (long chord bears North 0°34'21" West a distance of 219.14 feet) to Highway Engineer's Centerline Station "MV2" 6+00.00 P.O.C.; thence North 04°43'49" East, continuing along said East line a distance of 239.45 feet to Highway Engineer's Centerline Station "MV2" 3+51.40 P.S.C.; thence continuing along said East line, on the arc of a 25 foot inside offset spiral curve to the right a distance of 55.36 feet (long chord bears North 20°21'18" East a distance of 55.36 feet), record centerline spiral data: 240 foot spiral, S=712', a=2.5, to a point on the Easterly right-of-way line of County Road Number 1325; thence North 25°19'47" East, continuing along said Easterly right-of-way line a distance of 883.55 feet to the point of curvature of a curve; thence continuing along said Easterly right-of-way line, on the arc of a 1462.39 foot radius curve to the left a distance of 345.22 feet (long chord bears North 19°34'02" East a distance of 344.42 feet) to the "INITIAL POINT".

EXCEPTING THEREFROM, the right-of-way of County Road Number 1328, (also known as Northwest Livestock Road), said excepted right-of-way line is described as follows: Commencing at the Northeast Corner of the Southeast Quarter of said Section 25; thence South 00°01'13" West along the East line of said Southeast Quarter a distance of 5.54 feet to the intersection of said East line with the Easterly line of County Road Number 1325; thence South 00°01'13" West, continuing along said East line a distance of 1172.57 feet to the intersection of said East line with the North line of County Road Number 1328, (also known as Northwest Livestock Road), the TRUE POINT OF BEGINNING for this Exception Description; thence South 00°01'13" West, continuing along the East line of said Southeast Quarter a distance of 1161.49 feet to the Northerly right-of-way line of State of Oregon, Highway Commission, Frontage Road; thence along the North line of said Frontage Road, on the arc of a 30 foot inside offset spiral curve to the right a distance of 28.94 feet (long chord bears North 43°18'24" East a distance of 28.94 feet), record spiral data: 200 foot spiral, S=700', a=2.5, to a point on the West right-of-way line of County Road Number 1328; thence North 00°01'13" East along said West right-of-way line a distance of 1029.21 feet to the point of curvature of a curve; thence continuing along said West right-of-way line, on the arc of a 280.00 foot radius curve to the left a distance of 231.12 feet (long chord bears North 23°27'53" West a distance of 224.61 feet) to point of tangency; thence North 47°16'24" West, continuing along said West right-of-way line a distance of 196.82 feet to the point of curvature of a curve; thence continuing along said West right-of-way line, on the arc of a 320.00 foot radius curve to the right a distance of 116.70 feet (long chord bears North 36°49'34" West a distance of 116.05 feet) to point of tangency; thence North 28°22'44" West a distance of 38.75 feet to the intersection of the West right-of-way line of County Road Number 1328 with the Easterly right-of-way line of County Road Number 1325; thence North 25°19'47" East along the Easterly right-of-way line of County Road Number 1325 a distance of 50.96 feet to the intersection of the West right-of-way line of County Road Number 1328; thence South 26°22'44" East along said East right-of-way line a distance of 70.33 feet to the point of curvature of a curve; thence continuing along said East right-of-way line, on the arc of a 280.00 foot radius curve to the left a distance of 102.11 feet (long chord bears South 36°49'34" East a distance of 101.54 feet) to point of tangency; thence South 47°16'24" East, continuing along said East right-of-way line a distance of 196.82 feet to the point of curvature of a curve; thence continuing along said East right-of-way line, on the arc of a 320.00 foot radius curve to the right a distance of 150.40 feet (long chord bears South 33°48'31" East a distance of 149.02 feet) to the TRUE POINT OF BEGINNING.

TOTAL AREA OF PARCELS 1, 2 AND 3 = 14.86 ACRES, M/L

Will. R. Wells
WILLIAM R. WELLS, PLS 1106

OWNER'S DECLARATION & DEDICATION

MEDELEZ TRUCKING, LLC, AN OREGON LIMITED LIABILITY CORPORATION, DOES HEREBY ACKNOWLEDGE THIS PARTITION PLAT WAS PREPARED WITH ITS KNOWLEDGE AND CONSENT, AND PARTITIONED IN ACCORDANCE WITH ORS CHAPTER 92, AS REVISED, AND THE UMATILLA COUNTY DEVELOPMENT ORDINANCE. THE NEW RIGHT-OF-WAYS SHOWN ON THIS PLAT ARE HEREBY DEDICATED TO UMATILLA COUNTY, IT'S SUCCESSORS AND ASSIGNS.

MEDELEZ TRUCKING, LLC, BY
[Signature]
PRESIDENT
SUBSCRIBED AND SWORN BEFORE ME THIS
30 DAY OF October 2000.
[Signature]
NOTARY PUBLIC FOR THE STATE OF OREGON
MY COMMISSION EXPIRES 10-14-2004



REGISTERED PROFESSIONAL LAND SURVEYOR
Will. R. Wells
OREGON
JULY 22, 1977
WILLIAM R. WELLS
1106
RENEWS 6/30/02

WILLIAM R. WELLS, PLS
357 N.E. HWY. 11
P.O. BOX 1696
PENDLETON, OR 97801
PHONE: (541) 276-6362

APPROVALS

EXAMINED AND APPROVED THIS
3rd DAY OF November 2000.
LAND PARTITION APPROVAL NO. LD-110-718-00
[Signature]
UMATILLA COUNTY PLANNING DIRECTOR
EXAMINED AND APPROVED THIS
30 DAY OF October 2000.
[Signature]
WESTLAND IRRIGATION DISTRICT
EXAMINED AND APPROVED THIS
30 DAY OF October 2000.
[Signature]
UMATILLA COUNTY SURVEYOR
THIS IS TO CERTIFY THAT UMATILLA COUNTY HEREBY ACCEPTS THE ROAD RIGHT-OF-WAY DEDICATIONS MADE BY THIS PARTITION PLAT AND HEREBY APPROVES THIS PLAT FOR RECORDING IN THE PARTITION PLAT RECORDS OF UMATILLA COUNTY, BY ORDER OF THE UNDERSIGNED.
UMATILLA COUNTY BOARD OF COMMISSIONERS:
DATED THIS
3 DAY OF NOVEMBER 2000.
A B S E N T
CHAIRMAN
[Signature]
COMMISSIONER
[Signature]
COMMISSIONER
TAXES ARE PAID IN FULL, THIS
2nd DAY OF November 2000.
[Signature]
RECORDING INFORMATION
UMATILLA COUNTY OFFICE OF RECORDS:
STATE OF OREGON
COUNTY OF UMATILLA
I certify that this instrument was received and recorded
ON November 6, 2000
at 8:00 o'clock Am., in the record of
PLATS of said County.
YEAR NUMBER Side
2000 47
OFFICE OF COUNTY RECORDS
By: GEORGIA DUNAWAY Records Officer
Fees \$ 50.00 No. 2000-3780442

I CERTIFY THIS IS AN EXACT COPY OF PARTITION PLAT NO. 2000-47

Will. R. Wells
WILLIAM R. WELLS

PROJECT:
PARTITION PLAT FOR:
BOUNDS/MEDELEZ
LOCATED IN THE SOUTHEAST QUARTER OF SECTION 25, TOWNSHIP 4 NORTH, RANGE 27 EAST, W.M., UMATILLA COUNTY, OREGON.